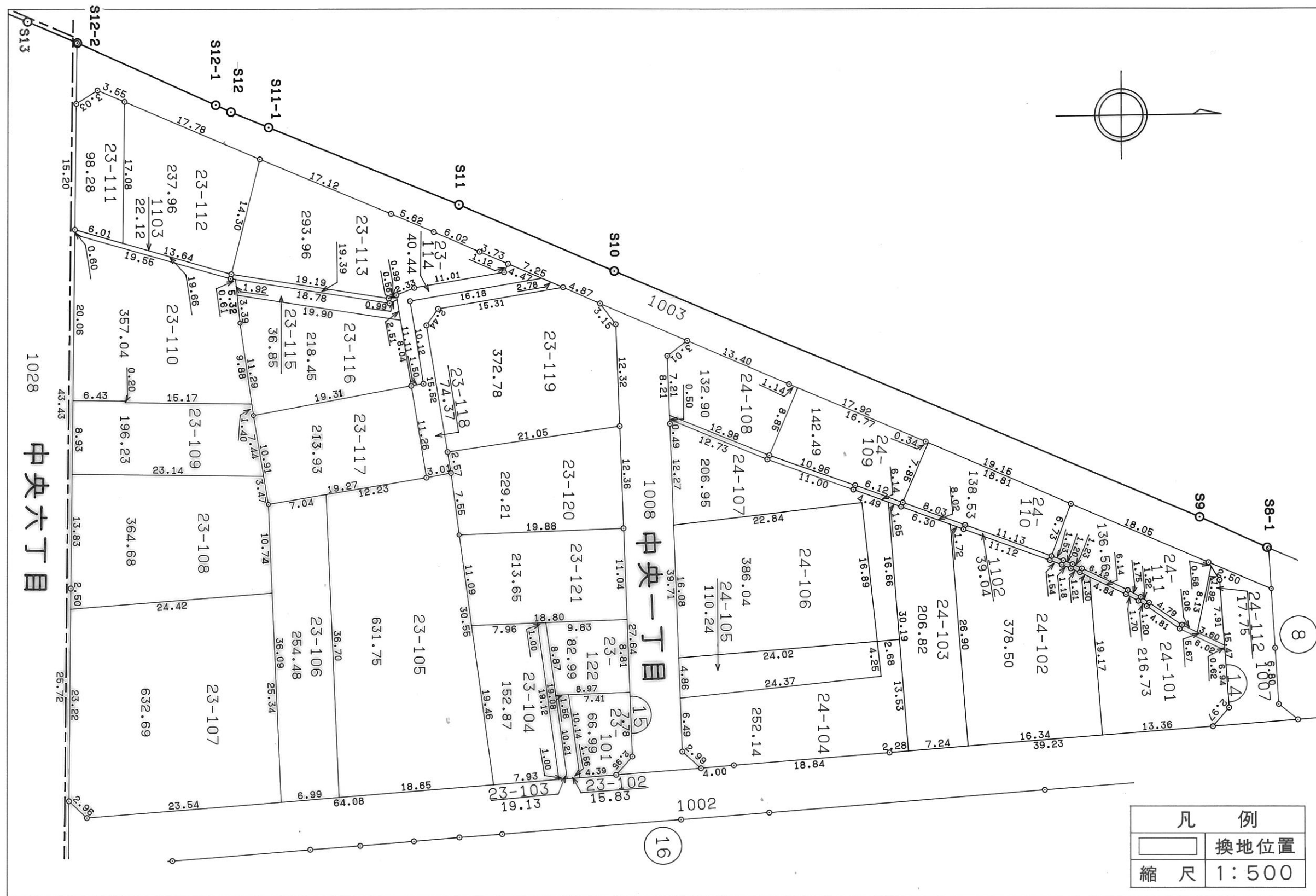
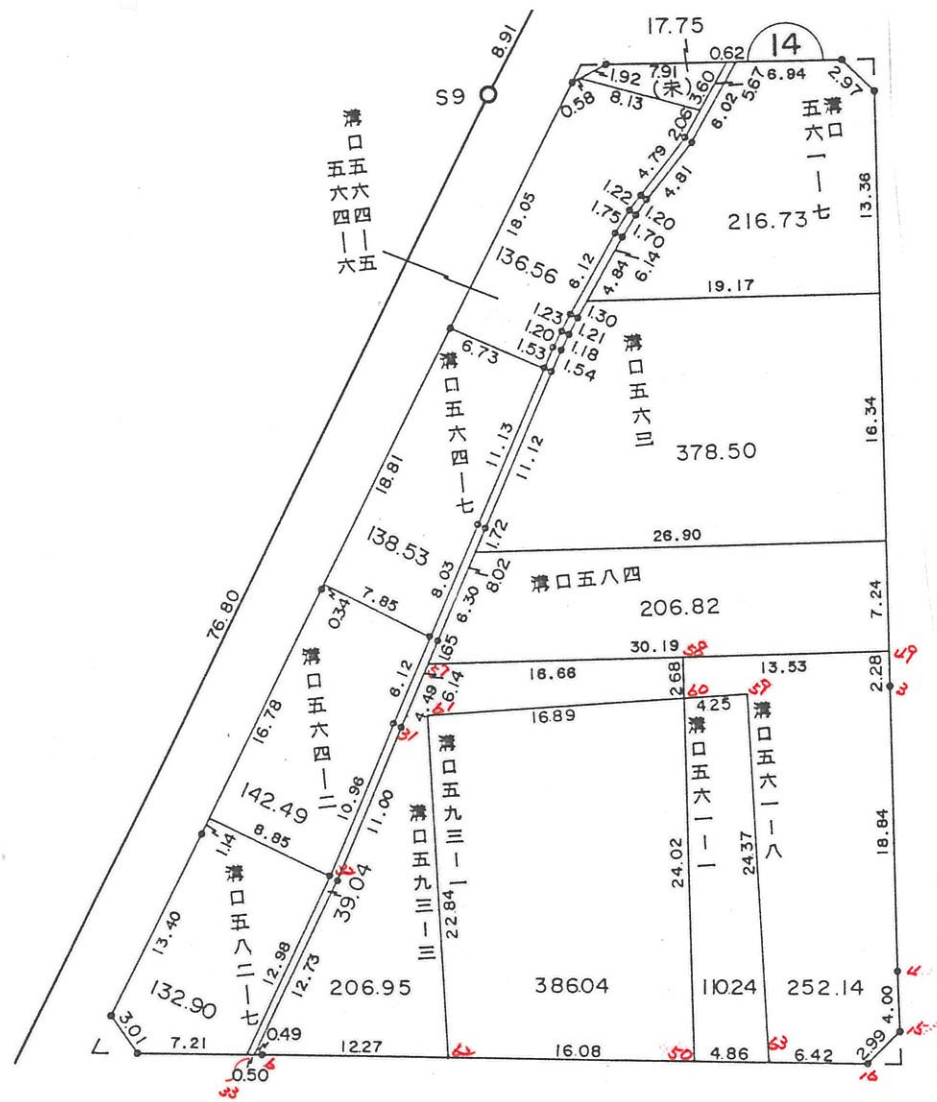


# 岡山県南広域都市計画 総社中央地区土地区画整理事業 換地図 BNo,14,15



平成 2, 27, 22 分筆計算



\* \* \* 線上計算書 \* \* \* (14-6) - (14-50) N O 1

方向角 = 89- 1- 6 COS= +0.017132 SIN= +0.999853 修正率 = 1.0000000

点 名	観測距離	修正距離	D X	X 配布	D Y	Y 配布	X	Y
14-6							-147657.216	- 53543.322
14-62	12.271	12.271	+ 0.210	+ 0	+ 12.269	+ 0	-147657.006	- 53531.053
14-50	16.083	16.083	+ 0.276	- 1	+ 16.081	+ 0	-147656.731	- 53514.972
合計 =	28.354	28.354	+ 0.486	- 1	+ 28.350	+ 0	+ 0.485	+ 28.350

\* \* \* 線上計算書 \* \* \* (14-50) - (14-16) N O 2

方向角 = 89- 1- 6 COS= +0.017132 SIN= +0.999853 修正率 = 1.0000000

点 名	観測距離	修正距離	D X	X 配布	D Y	Y 配布	X	Y
14-50							-147656.731	- 53514.972
14-63	4.867	4.867	+ 0.083	+ 0	+ 4.866	+ 0	-147656.648	- 53510.106
14-16	6.492	6.492	+ 0.111	+ 1	+ 6.491	+ 0	-147656.536	- 53503.615
合計 =	11.359	11.359	+ 0.194	+ 1	+ 11.357	+ 0	+ 0.195	+ 11.357

\* \* \* 方 向 角 · 距 離 計 算 書 \* \* \*

NO 1				NO 2				NO 3			
点名	X	Y		点名	X	Y		点名	X	Y	
1 14-61	- 147634.265	- 53533.252		1 14-61	- 147634.265	- 53533.252		1 14-59	- 147632.365	- 53512.189	
2 14-59	- 147632.365	- 53512.189		2 14-62	- 147657.006	- 53531.053		2 14-63	- 147656.648	- 53510.106	
COS=+ 0.089841 SIN=+ 0.995956				COS=- 0.995357 SIN=+ 0.096249				COS=- 0.996341 SIN=+ 0.085466			
A L= 84-50-44 L = 21.149				A L= 174-28-37 L = 22.847				A L= 175- 5-50 L = 24.372			

\* \* \* \* \* 2 直 線 の 交 点 計 算 書 \* \* \* \* \*

求 点 名	N O	1	14-60
ALH T1.T2	84-50-44	356-32-	3
SIN T1.T2	+0.995956	-0.060453	
COS T1.T2	+0.089841	+0.998171	
コウカク = T	88-18-41		
COSEC T	+ 1.000434		
	X	Y	
1 14-61	- 147634.265	- 53533.252	
2 14-50	- 147656.731	- 53514.972	
X1-2.Y2-1	+ 22.466	+ 18.280	
X1-2*SI1.2	+ 22.3752	- 1.3581	
Y2-1*CO1.2	+ 1.6423	+ 18.2466	
COSEC*S1.2	+ 24.0279	+ 16.8958	
※ヨリ S1.S2	16.896	24.028	
	X	Y	
1 14-61	- 147634.265	- 53533.252	
DX DY	+ 1.518	+ 16.828	
3 14-60	- 147632.747	- 53516.424	

\* \* \* \* 5-1 LOT

面積計算書

\* \* \* \* NO 1

点名	X	DX	DMD.1	Y	DY	DMD.2	DX * DMD.2	DY * DMD.1
14-50	- 147656.731			- 53514.972				
14-62	- 147657.006	+ 0.275	+ 0.275	- 53531.053	+ 16.081	+ 16.081	+ 4.422275	+ 4.422275
14-61	- 147634.265	- 22.741	- 22.191	- 53533.252	+ 2.199	+ 34.361	- 781.403501	- 48.798009
14-60	- 147632.747	- 1.518	- 46.450	- 53516.424	- 16.828	+ 19.732	- 29.953176	+ 781.660600
14-50	- 147656.731	+ 23.984	- 23.984	- 53514.972	- 1.452	+ 1.452	+ 34.824768	+ 34.824768
		+ 24.259			+ 18.280		+ 39.247043	+ 820.907643
		- 24.259			- 18.280		- 811.356677	- 48.798009
							- 772.109634	+ 772.109634

面積 = 386.054817

$593.99 \text{ m}^2 - 206.95 \text{ m}^2 = 386.04 \text{ m}^2 \approx 73$

\* \* \* \* 5-2 LOT

面積計算書 \* \* \* \* NO 1

点 名	X	DX	DMD.1	Y	DY	DMD.2	DX * DMD.2	DY * DMD.1
14-62	- 147657.006			- 53531.053				
14-6	- 147657.216	+ 0.210	+ 0.210	- 53543.322	+ 12.269	+ 12.269	+ 2.576490	+ 2.576490
14-33	- 147657.226	+ 0.010	+ 0.430	- 53543.818	+ 0.496	+ 25.034	+ 0.250340	+ 0.213280
14-32	- 147645.543	- 11.683	- 11.243	- 53538.746	- 5.072	+ 20.458	- 239.010814	+ 57.024496
14-31	- 147635.255	- 10.288	- 33.214	- 53534.835	- 3.911	+ 11.475	- 118.054800	+ 129.899954
14-57	- 147631.058	- 4.197	- 47.699	- 53533.226	- 1.609	+ 5.955	- 24.993135	+ 76.747691
14-58	- 147630.066	- 0.992	- 52.888	- 53516.587	- 16.639	- 12.293	+ 12.194656	+ 880.003432
14-60	- 147632.747	+ 2.681	- 51.199	- 53516.424	- 0.163	- 29.095	- 78.003695	+ 8.345437
14-61	- 147634.265	+ 1.518	- 47.000	- 53533.252	+ 16.828	- 12.430	- 18.868740	- 790.916000
14-62	- 147657.006	+ 22.741	- 22.741	- 53531.053	- 2.199	+ 2.199	+ 50.007459	+ 50.007459
		+ 27.160			+ 29.593		+ 65.028945	+ 1204.818239
		- 27.160			- 29.593		- 478.931184	- 790.916000
							- 413.902239	+ 413.902239

面積 = 206.951119

\* \* \* \* 4-1 LOT

面積計算書

\* \* \* \* NO 1

点名	X	DX	DMD.1	Y	DY	DMD.2	DX * DMD.2	DY * DMD.1
14-63	- 147656.648		- 53510.106					
14-50	- 147656.731	+ 0.083	+ 0.083	- 53514.972	+ 4.866	+ 4.866	+ 0.403878	+ 0.403878
14-60	- 147632.747	- 23.984	- 23.818	- 53516.424	+ 1.452	+ 11.184	- 268.237056	- 34.583736
14-59	- 147632.365	- 0.382	- 48.184	- 53512.189	- 4.235	+ 8.401	- 3.209182	+ 204.059240
14-63	- 147656.648	+ 24.283	- 24.283	- 53510.106	- 2.083	+ 2.083	+ 50.581489	+ 50.581489
		+ 24.366			+ 6.318		+ 50.985367	+ 255.044607
		- 24.366			- 6.318		- 271.446238	- 34.583736
							- 220.460871	+ 220.460871

面積 = 110.230435

363.38<sup>m</sup> - 352.14<sup>m</sup> = 110.24<sup>m</sup> と 73.

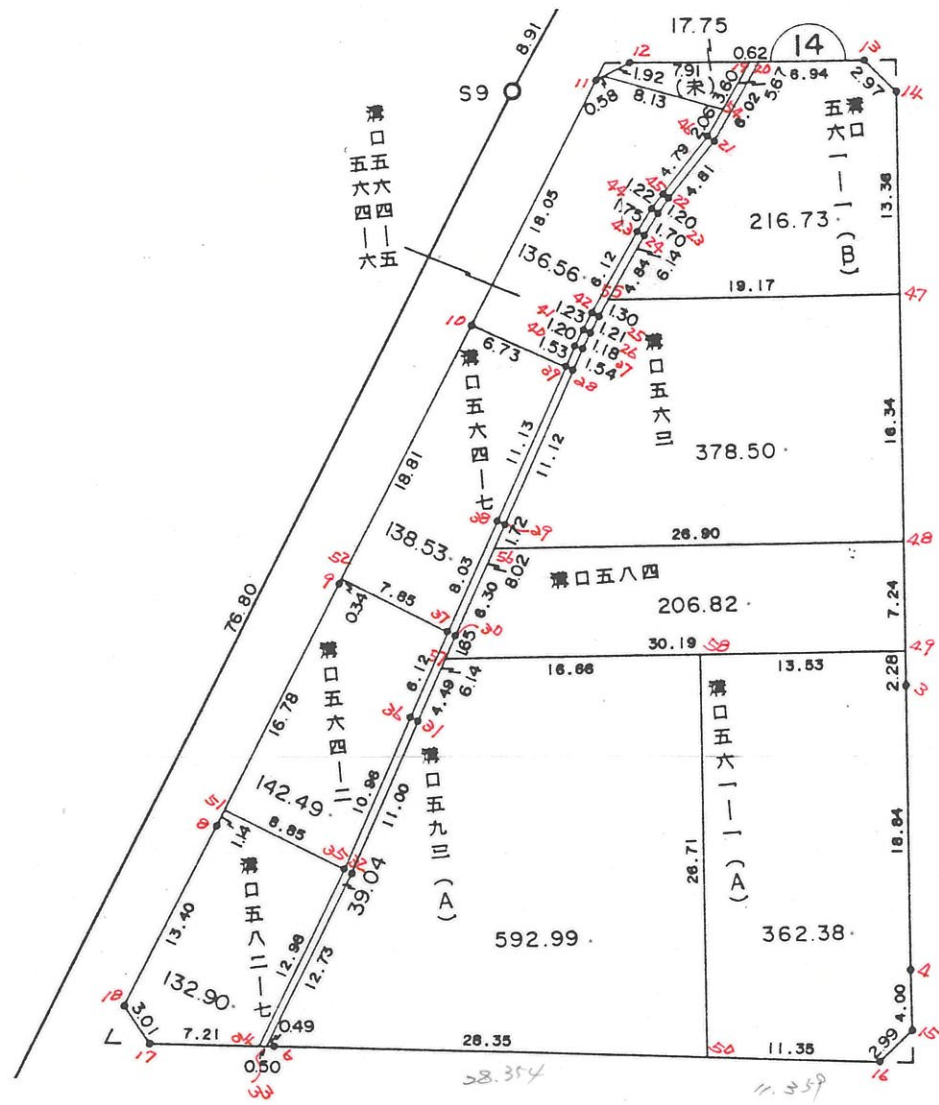
\* \* \* \* 4-2 LOT

## 面 積 計 算 書

\* \* \* \* NO 1

点 名	X	DX	DMD.1	Y	DY	DMD.2	DX * DMD.2	DY * DMD.1
14-49	- 147629.262		- 53503.081					
14-3	- 147631.545	+ 2.283	+ 2.283	- 53502.945	- 0.136	- 0.136	- 0.310488	- 0.310488
14-4	- 147650.354	+ 18.809	+ 23.375	- 53501.849	- 1.096	- 1.368	- 25.730712	- 25.619000
14-15	- 147654.349	+ 3.995	+ 46.179	- 53501.572	- 0.277	- 2.741	- 10.950295	- 12.791583
14-16	- 147656.536	+ 2.187	+ 52.361	- 53503.615	+ 2.043	- 0.975	- 2.132325	+ 106.973523
14-63	- 147656.648	+ 0.112	+ 54.660	- 53510.106	+ 6.491	+ 7.559	+ 0.846608	+ 354.798060
14-59	- 147632.365	- 24.283	+ 30.489	- 53512.189	+ 2.083	+ 16.133	- 391.757639	+ 63.508587
14-60	- 147632.747	+ 0.382	+ 6.588	- 53516.424	+ 4.235	+ 22.451	+ 8.576282	+ 27.900180
14-58	- 147630.066	- 2.681	+ 4.289	- 53516.587	+ 0.163	+ 26.849	- 71.982169	+ 0.699107
14-49	- 147629.262	- 0.804	+ 0.804	- 53503.081	- 13.506	+ 13.506	- 10.858824	- 10.858824
		+ 27.768		+ 15.015		+ 9.422890	+ 553.879457	
		- 27.768		- 15.015		- 513.722452	- 49.579895	
						- 504.299562	+ 504.299562	

面 積 = 252.149781



\* \* \* 各筆面積 集計表 \* \* \*

街区名・筆名	各筆面積	隅切面積
14 BLOCK	2364.71	
1 LOT	216.73	
2 LOT	378.50	
3 LOT	206.82	
4 LOT	362.38	
5 LOT	592.99	
6 LOT	132.90	
7 LOT	142.49	
8 LOT	138.53	
9 LOT	136.56	
10 LOT	17.75	
スロ	39.04	
1 スミキリ		0.94
2 スミキリ		2.20
5 スミキリ		2.35
7 スミキリ		3.59
合計 =	2364.69	9.08

\* \* \* \* \* 各 筆 面 積 計 算 書 \* \* \* \* \*

14 BLOCK

点 名	X	Y	(X-X0)*(YN-1-Y0)	(XN-1-X0)*(Y-Y0)
X0·Y0	- 147500.000	- 53500.000		
14-11	- 147592.486	- 53525.104		
14-12	- 147591.211	- 53522.943	+ 2289.760944	+ 2121.906298
14-13	- 147590.389	- 53507.493	+ 2073.794827	+ 683.444023
14-14	- 147592.380	- 53505.278	+ 692.203340	+ 477.073142
14-3	- 147631.545	- 53502.945	+ 694.294510	+ 272.059100
14-4	- 147650.354	- 53501.849	+ 442.792530	+ 243.226705
14-15	- 147654.349	- 53501.572	+ 285.391301	+ 236.356488
14-16	- 147656.536	- 53503.615	+ 246.074592	+ 557.971635
14-6	- 147657.216	- 53543.322	+ 568.335840	+ 6781.452592
14-17	- 147657.375	- 53551.534	+ 6817.799750	+ 8101.969344
14-18	- 147654.945	- 53553.322	+ 7984.935630	+ 8391.549750
14-8	- 147642.736	- 53547.790	+ 7610.968992	+ 7404.821550
14-9	- 147626.391	- 53540.442	+ 6040.225890	+ 5772.529312
14-10	- 147608.948	- 53532.523	+ 4406.075016	+ 4110.614493
14-11	- 147592.486	- 53525.104	+ 3007.922178	+ 2735.030592
			+ 43160.575340	+ 47890.005024
		倍面積	= 4729.429684	
		面積	= 2364.714842	

1 LOT

点 名	X	Y	(X-X0)*(YN-1-Y0)	(XN-1-X0)*(Y-Y0)
X0·Y0	- 147500.000	- 53500.000		
14-20	- 147590.757	- 53514.423		
14-13	- 147590.389	- 53507.493	+ 1303.680547	+ 680.042201
14-14	- 147592.380	- 53505.278	+ 692.203340	+ 477.073142
14-47	- 147605.719	- 53504.483	+ 557.984882	+ 414.139540
14-55	- 147606.859	- 53523.624	+ 479.048897	+ 2497.505656
14-24	- 147602.531	- 53521.456	+ 2422.192344	+ 2292.766704
14-23	- 147601.051	- 53520.617	+ 2168.150256	+ 2113.881627
14-22	- 147600.038	- 53519.956	+ 2062.483446	+ 2016.573756
14-21	- 147596.130	- 53517.145	+ 1918.370280	+ 1715.151510
14-20	- 147590.757	- 53514.423	+ 1556.028765	+ 1386.482990
			+ 13160.142757	+ 13593.617126
		倍面積	= 433.474369	
		面積	= 216.737184	

2 LOT

点 名	X	Y	(X-X0)*(YN-1-Y0)	(XN-1-X0)*(Y-Y0)
X0·Y0	- 147600.000	- 53500.000		
14-47	- 147605.719	- 53504.483		
14-48	- 147622.031	- 53503.512	+ 98.764973	+ 20.085128

\* \* \* \* \* 各 筆 面 積 計 算 書 \* \* \* \* \*

点 名	X	Y	(X-X0)*(YN-1-Y0)	(XN-1-X0)*(Y-Y0)
14-56	- 147623.631	- 53530.368	+ 82.992072	+ 669.037408
14-29	- 147622.024	- 53529.749	+ 668.824832	+ 702.998619
14-28	- 147611.642	- 53525.756	+ 346.337858	+ 567.250144
14-27	- 147610.203	- 53525.193	+ 262.788468	+ 293.296906
14-26	- 147609.120	- 53524.722	+ 229.760160	+ 252.238566
14-25	- 147608.023	- 53524.207	+ 198.344606	+ 220.767840
14-55	- 147606.859	- 53523.624	+ 166.035813	+ 189.535352
14-47	- 147605.719	- 53504.483	+ 135.105656	+ 30.748897
			+ 2188.954438	+ 2945.958860
		倍面積	= 757.004422	
		面積	= 378.502211	

3 LOT

点 名	X	Y	(X-X0)*(YN-1-Y0)	(XN-1-X0)*(Y-Y0)
X0-Y0	- 147600.000	- 53500.000		
14-48	- 147622.031	- 53503.512		
14-49	- 147629.262	- 53503.081	+ 102.768144	+ 67.877511
14-57	- 147631.058	- 53533.226	+ 95.689698	+ 972.259212
14-30	- 147629.516	- 53532.635	+ 980.698616	+ 1013.577830
14-56	- 147623.631	- 53530.368	+ 771.197685	+ 896.341888
14-48	- 147622.031	- 53503.512	+ 669.037408	+ 82.992072
			+ 2619.391551	+ 3033.048513
		倍面積	= 413.656962	
		面積	= 206.828481	

4 LOT

点 名	X	Y	(X-X0)*(YN-1-Y0)	(XN-1-X0)*(Y-Y0)
X0-Y0	- 147600.000	- 53500.000		
14-49	- 147629.262	- 53503.081		
14-3	- 147631.545	- 53502.945	+ 97.190145	+ 86.176590
14-4	- 147650.354	- 53501.849	+ 148.292530	+ 58.326705
14-15	- 147654.349	- 53501.572	+ 100.491301	+ 79.156488
14-16	- 147656.536	- 53503.615	+ 88.874592	+ 196.471635
14-50	- 147656.731	- 53514.972	+ 205.082565	+ 846.456992
14-58	- 147630.066	- 53516.587	+ 450.148152	+ 940.997097
14-49	- 147629.262	- 53503.081	+ 485.368794	+ 92.633346
			+ 1575.448079	+ 2300.218853
		倍面積	= 724.770774	
		面積	= 362.385387	

5 LOT

点 名	X	Y	(X-X0)*(YN-1-Y0)	(XN-1-X0)*(Y-Y0)
X0-Y0	- 147600.000	- 53500.000		
14-50	- 147656.731	- 53514.972		
14-6	- 147657.216	- 53543.322	+ 856.637952	+ 2457.700382

\* \* \* \* \* 各 筆 面 積 計 算 書 \* \* \* \* \*

点 名	X	Y	(X-X0)*(YN-1-Y0)	(XN-1-X0)*(Y-Y0)
14-33	- 147657.226	- 53543.818	+ 2479.144772	+ 2507.090688
14-32	- 147645.543	- 53538.746	+ 1995.603174	+ 2217.278596
14-31	- 147635.255	- 53534.835	+ 1365.990230	+ 1586.490405
14-57	- 147631.058	- 53533.226	+ 1081.905430	+ 1171.382630
14-58	- 147630.066	- 53516.587	+ 998.972916	+ 515.159046
14-50	- 147656.731	- 53514.972	+ 940.997097	+ 450.148152
			+ 9719.251571	+ 10905.249899
		倍面積	= 1185.998328	
		面積	= 592.999164	

6 LOT

点 名	X	Y	(X-X0)*(YN-1-Y0)	(XN-1-X0)*(Y-Y0)
X0·Y0	- 147600.000	- 53500.000		
14-34	- 147657.236	- 53544.321		
14-17	- 147657.375	- 53551.534	+ 2542.917375	+ 2949.600024
14-18	- 147654.945	- 53553.322	+ 2831.535630	+ 3059.349750
14-8	- 147642.736	- 53547.790	+ 2278.768992	+ 2625.821550
14-51	- 147641.692	- 53547.321	+ 1992.460680	+ 2022.310256
14-35	- 147645.289	- 53539.225	+ 2143.120769	+ 1635.368700
14-34	- 147657.236	- 53544.321	+ 2245.082100	+ 2007.253769
			+ 14033.885546	+ 14299.704049
		倍面積	= 265.818503	
		面積	= 132.909251	

7 LOT

点 名	X	Y	(X-X0)*(YN-1-Y0)	(XN-1-X0)*(Y-Y0)
X0·Y0	- 147600.000	- 53500.000		
14-51	- 147641.692	- 53547.321		
14-9	- 147626.391	- 53540.442	+ 1248.848511	+ 1686.107864
14-52	- 147626.081	- 53540.301	+ 1054.767802	+ 1063.583691
14-37	- 147629.322	- 53533.148	+ 1181.705922	+ 864.532988
14-36	- 147635.029	- 53535.357	+ 1161.141292	+ 1036.737954
14-35	- 147645.289	- 53539.225	+ 1601.283173	+ 1374.012525
14-51	- 147641.692	- 53547.321	+ 1635.368700	+ 2143.120769
			+ 7883.115400	+ 8168.095791
		倍面積	= 284.980391	
		面積	= 142.490195	

8 LOT

点 名	X	Y	(X-X0)*(YN-1-Y0)	(XN-1-X0)*(Y-Y0)
X0·Y0	- 147600.000	- 53500.000		
14-52	- 147626.081	- 53540.301		
14-10	- 147608.948	- 53532.523	+ 360.613348	+ 848.232363

\* \* \* \* \* 各 筆 面 積 計 算 書 \* \* \* \* \*

点 名	X	Y	(X-X0)*(YN-1-Y0)	(XN-1-X0)*(Y-Y0)
14-39	- 147611.431	- 53526.258	+ 371.770413	+ 234.956584
14-38	- 147621.827	- 53530.255	+ 573.133366	+ 345.844905
14-37	- 147629.322	- 53533.148	+ 887.137110	+ 723.521396
14-52	- 147626.081	- 53540.301	+ 864.532988	+ 1181.705922
			+ 3057.187225	+ 3334.261170
		倍面積	= 277.073945	
		面積	= 138.536972	

9 LOT

点 名	X	Y	(X-X0)*(YN-1-Y0)	(XN-1-X0)*(Y-Y0)
X0-Y0	- 147500.000	- 53500.000		
14-10	- 147608.948	- 53532.523		
14-11	- 147592.486	- 53525.104	+ 3007.922178	+ 2735.030592
14-53	- 147592.187	- 53524.597	+ 2314.262448	+ 2274.878142
14-54	- 147594.010	- 53516.666	+ 2312.363970	+ 1536.388542
14-46	- 147595.856	- 53517.596	+ 1597.536096	+ 1654.199960
14-45	- 147599.762	- 53520.379	+ 1755.412152	+ 1953.449424
14-44	- 147600.763	- 53521.085	+ 2053.449177	+ 2103.481770
14-43	- 147602.295	- 53521.948	+ 2156.890075	+ 2211.546324
14-42	- 147607.776	- 53524.691	+ 2365.467648	+ 2525.765845
14-41	- 147608.894	- 53525.221	+ 2688.701754	+ 2718.218496
14-40	- 147609.998	- 53525.704	+ 2774.259558	+ 2799.011376
14-39	- 147611.431	- 53526.258	+ 2864.222424	+ 2888.327484
14-10	- 147608.948	- 53532.523	+ 2860.756584	+ 3624.070413
			+ 28751.244064	+ 29024.368368
		倍面積	= 273.124304	
		面積	= 136.562152	

10 LOT

点 名	X	Y	(X-X0)*(YN-1-Y0)	(XN-1-X0)*(Y-Y0)
X0-Y0	- 147500.000	- 53500.000		
14-53	- 147592.187	- 53524.597		
14-12	- 147591.211	- 53522.943	+ 2243.516967	+ 2115.046341
14-19	- 147590.790	- 53515.044	+ 2082.994970	+ 1372.178284
14-54	- 147594.010	- 53516.666	+ 1414.286440	+ 1513.106140
14-53	- 147592.187	- 53524.597	+ 1536.388542	+ 2312.363970
			+ 7277.186919	+ 7312.694735
		倍面積	= 35.507816	
		面積	= 17.753908	

入ロ

点 名	X	Y	(X-X0)*(YN-1-Y0)	(XN-1-X0)*(Y-Y0)
X0-Y0	- 147500.000	- 53500.000		
14-19	- 147590.790	- 53515.044		
14-20	- 147590.757	- 53514.423	+ 1365.348308	+ 1309.464170

\* \* \* \* \* 各 筆 面 積 計 算 書 \* \* \* \* \*

点 名	X	Y	(X-X0)*(YN-1-Y0)	(XN-1-X0)*(Y-Y0)
14-21	- 147596.130	- 53517.145	+ 1386.482990	+ 1556.028765
14-22	- 147600.038	- 53519.956	+ 1715.151510	+ 1918.370280
14-23	- 147601.051	- 53520.617	+ 2016.573756	+ 2062.483446
14-24	- 147602.531	- 53521.456	+ 2113.881627	+ 2168.150256
14-25	- 147608.023	- 53524.207	+ 2317.741488	+ 2481.967917
14-26	- 147609.120	- 53524.722	+ 2641.467840	+ 2670.544606
14-27	- 147610.203	- 53525.193	+ 2724.438566	+ 2749.060160
14-28	- 147611.642	- 53525.756	+ 2812.596906	+ 2838.388468
14-29	- 147622.024	- 53529.749	+ 3142.850144	+ 3321.237858
14-30	- 147629.516	- 53532.635	+ 3852.971484	+ 3982.253240
14-31	- 147635.255	- 53534.835	+ 4414.046925	+ 4511.689860
14-32	- 147645.543	- 53538.746	+ 5069.990405	+ 5240.590230
14-33	- 147657.226	- 53543.818	+ 6091.878596	+ 6377.403174
14-34	- 147657.236	- 53544.321	+ 6889.767048	+ 6968.413546
14-35	- 147645.289	- 53539.225	+ 6439.353769	+ 6167.582100
14-36	- 147635.029	- 53535.357	+ 5296.512525	+ 5136.983173
14-37	- 147629.322	- 53533.148	+ 4572.437954	+ 4475.941292
14-38	- 147621.827	- 53530.255	+ 4038.321396	+ 3912.637110
14-39	- 147611.431	- 53526.258	+ 3371.344905	+ 3198.933366
14-40	- 147609.998	- 53525.704	+ 2888.327484	+ 2864.222424
14-41	- 147608.894	- 53525.221	+ 2799.011376	+ 2774.259558
14-42	- 147607.776	- 53524.691	+ 2718.218496	+ 2688.701754
14-43	- 147602.295	- 53521.948	+ 2525.765845	+ 2365.467648
14-44	- 147600.763	- 53521.085	+ 2211.546324	+ 2156.890075
14-45	- 147599.762	- 53520.379	+ 2103.481770	+ 2053.449177
14-46	- 147595.856	- 53517.596	+ 1953.449424	+ 1755.412152
14-19	- 147590.790	- 53515.044	+ 1597.540840	+ 1442.057664

+ 91070.499701      + 91148.583469  
 倍面積 =            78.083768  
 面積 =                39.041884

1 スミリ

点 名	X	Y	(X-X0)*(YN-1-Y0)	(XN-1-X0)*(Y-Y0)
X0・Y0	- 147500.000	- 53500.000		
14-1	- 147591.297	- 53524.568		
14-11	- 147592.486	- 53525.104	+ 2272.196048	+ 2291.919888
14-12	- 147591.211	- 53522.943	+ 2289.760944	+ 2121.906298
14-1	- 147591.297	- 53524.568	+ 2094.627071	+ 2240.871848

+ 6656.584063      + 6654.698034  
 倍面積 =            1.886029  
 面積 =                0.943014

2 スミリ

点 名	X	Y	(X-X0)*(YN-1-Y0)	(XN-1-X0)*(Y-Y0)
X0・Y0	- 147500.000	- 53500.000		
14-2	- 147590.278	- 53505.403		
14-13	- 147590.389	- 53507.493	+ 488.371767	+ 676.453054

\* \* \* \* \* 各 筆 面 積 計 算 書 \* \* \* \* \*

点 名	X	Y	(X-X0)*(YN-1-Y0)	(XN-1-X0)*(Y-Y0)
14-14	- 147592.380	- 53505.278	+ 692.203340	+ 477.073142
14-2	- 147590.278	- 53505.403	+ 476.487284	+ 499.129140
			+ 1657.062391	+ 1652.655336
		倍面積	= 4.407055	
		面積	= 2.203527	

5 スキリ

点 名	X	Y	(X-X0)*(YN-1-Y0)	(XN-1-X0)*(Y-Y0)
X0-Y0	- 147600.000	- 53500.000		
14-5	- 147656.498	- 53501.423		
14-15	- 147654.349	- 53501.572	+ 77.338627	+ 88.814856
14-16	- 147656.536	- 53503.615	+ 88.874592	+ 196.471635
14-5	- 147656.498	- 53501.423	+ 204.240270	+ 80.450728
			+ 370.453489	+ 365.737219
		倍面積	= 4.716270	
		面積	= 2.358135	

7 スキリ

点 名	X	Y	(X-X0)*(YN-1-Y0)	(XN-1-X0)*(Y-Y0)
X0-Y0	- 147600.000	- 53500.000		
14-7	- 147657.432	- 53554.449		
14-17	- 147657.375	- 53551.534	+ 3124.011375	+ 2959.700688
14-18	- 147654.945	- 53553.322	+ 2831.535630	+ 3059.349750
14-7	- 147657.432	- 53554.449	+ 3062.389104	+ 2991.700305
			+ 9017.936109	+ 9010.750743
		倍面積	= 7.185366	
		面積	= 3.592683	

\* \* \* 線上計算書 \* \* \* (14-14) - (14-3) NO 1

方向角 = 176-35-29 COS= -0.998231 SIN= +0.059456 修正率 = 1.0003570

点名	観測距離	修正距離	D X	X 配布	D Y	Y 配布	X	Y
14-14							-147592.380	- 53505.278
14-47	13.358	13.363	- 13.339	+ 0	+ 0.795	+ 0	-147605.719	- 53504.483
14-48	16.334	16.340	- 16.311	- 1	+ 0.972	- 1	-147622.031	- 53503.512
14-49	7.242	7.244	- 7.231	+ 0	+ 0.431	+ 0	-147629.262	- 53503.081
14-3	2.286	2.287	- 2.283	+ 0	+ 0.136	+ 0	-147631.545	- 53502.945
合計 =	39.220	39.234	- 39.164	- 1	+ 2.334	- 1	- 39.165	+ 2.333

\* \* \* 線上計算書 \* \* \* (14-16) - (14-6) NO 2

方向角 = 269- 1- 6 COS= -0.017132 SIN= -0.999853 修正率 = 1.0002267

点名	観測距離	修正距離	D X	X 配布	D Y	Y 配布	X	Y
14-16							-147656.536	- 53503.615
14-50	11.356	11.359	- 0.195	+ 0	- 11.357	+ 0	-147656.731	- 53514.972
14-6	28.348	28.354	- 0.486	+ 1	- 28.350	+ 0	-147657.216	- 53543.322
合計 =	39.704	39.713	- 0.681	+ 1	- 39.707	+ 0	- 0.680	- 39.707

\* \* \* 線上計算書 \* \* \* (14-8) - (14-9) NO 3

方向角 = 24-12-24 COS= +0.912072 SIN= +0.410029 修正率 = 1.0000000

点名	観測距離	修正距離	D X	X 配布	D Y	Y 配布	X	Y
14-8							-147642.736	- 53547.790
14-51	1.145	1.145	+ 1.044	+ 0	+ 0.469	+ 0	-147641.692	- 53547.321
14-9	16.776	16.776	+ 15.301	+ 0	+ 6.879	+ 0	-147626.391	- 53540.442
合計 =	17.921	17.921	+ 16.345	+ 0	+ 7.348	+ 0	+ 16.345	+ 7.348

\* \* \* 線上計算書 \* \* \* (14-9) - (14-10) NO 4

方向角 = 24-25- 4 COS= +0.910555 SIN= +0.413387 修正率 = 0.9996869

点名	観測距離	修正距離	D X	X 配布	D Y	Y 配布	X	Y
14-9							-147626.391	- 53540.442
14-52	0.340	0.340	+ 0.310	+ 0	+ 0.141	+ 0	-147626.081	- 53540.301
14-10	18.822	18.816	+ 17.133	+ 0	+ 7.778	+ 0	-147608.948	- 53532.523

合計 = 19.162 19.156 + 17.443 + 0 + 7.919 + 0 + 17.443 + 7.919

\*\*\* 線上計算書 \*\*\* (14-11) - (14-12) NO 5

方向角 = 59-27-33 COS= +0.508152 SIN= +0.861267 修正率 = 1.0000000

点名	観測距離	修正距離	D X	X 配布	D Y	Y 配布	X	Y
14-11							-147592.486	- 53525.104
14-53	0.589	0.589	+ 0.299	+ 0	+ 0.507	+ 0	-147592.187	- 53524.597
14-12	1.920	1.920	+ 0.976	+ 0	+ 1.654	+ 0	-147591.211	- 53522.943
合計 =	2.509	2.509	+ 1.275	+ 0	+ 2.161	+ 0	1.275	2.161

\*\*\* 線上計算書 \*\*\* (14-19) - (14-46) NO 6

方向角 = 206-44-12 COS= -0.893084 SIN= -0.449891 修正率 = 1.0000000

点名	観測距離	修正距離	D X	X 配布	D Y	Y 配布	X	Y
14-19							-147590.790	- 53515.044
14-54	3.605	3.605	- 3.220	+ 0	- 1.622	+ 0	-147594.010	- 53516.666
14-46	2.067	2.067	- 1.846	+ 0	- 0.930	+ 0	-147595.856	- 53517.596
合計 =	5.672	5.672	- 5.066	+ 0	- 2.552	+ 0	5.066	2.552

\*\*\* 線上計算書 \*\*\* (14-49) - (14-57) NO 7

方向角 = 266-35-29 COS= -0.059456 SIN= -0.998231 修正率 = 1.0000000

点名	観測距離	修正距離	D X	X 配布	D Y	Y 配布	X	Y
14-49							-147629.262	- 53503.081
14-58	13.530	13.530	- 0.804	+ 0	- 13.506	+ 0	-147630.066	- 53516.587
14-57	16.668	16.668	- 0.991	- 1	- 16.639	+ 0	-147631.058	- 53533.226
合計 =	30.198	30.198	- 1.795	- 1	- 30.145	+ 0	1.796	30.145

\* \* \* 方 向 角 · 距 離 計 算 書 \* \* \*

NO 点名	X	Y	NO 点名	X	Y	NO 点名	X	Y
1 14-53	- 147592.187	- 53524.597	1 14-50	- 147656.731	- 53514.972	1 14-51	- 147641.692	- 53547.321
2 14-54	- 147594.010	- 53516.666	2 14-58	- 147630.066	- 53516.587	2 14-35	- 147645.289	- 53539.225
COS=- 0.224016 SIN=+ 0.974586			COS=+ 0.998171 SIN=- 0.060456			COS=- 0.406023 SIN=+ 0.913863		
A L= 102-56-42 L = 8.138			A L= 356-32-3 L = 26.714			A L= 113-57-19 L = 8.859		

NO 点名	X	Y	NO 点名	X	Y
1 14-52	- 147626.081	- 53540.301	1 14-10	- 147608.948	- 53532.523
2 14-37	- 147629.322	- 53533.148	2 14-39	- 147611.431	- 53526.258
COS=- 0.412709 SIN=+ 0.910863			COS=- 0.368447 SIN=+ 0.929649		
A L= 114-22-30 L = 7.853			A L= 111-37-11 L = 6.739		

\* \* \* \* \* 2 直線 の 交点 計算書 \* \* \* \* \*

求点名	NO	1	14-55	2	14-56	3	14-57		
ALH T1.T2		26-36-24	266-35-29	21- 4- 2	266-35-29	20-58-26	266-35-29		
SIN T1.T2		+0.447863	-0.998231	+0.359463	-0.998231	+0.357942	-0.998231		
COS T1.T2		+0.894102	-0.059456	+0.933159	-0.059456	+0.933744	-0.059456		
コウカク = T		120- 0-55		114-28-33		114-22-57			
COSEC T	+	1.154878		+ 1.098737		+ 1.097924			
		X	Y						
1 14-25	-	147608.023	- 53524.207	14-30	- 147629.516	- 53532.635	14-31	- 147635.255	- 53534.835
2 14-47	-	147605.719	- 53504.483	14-48	- 147622.031	- 53503.512	14-49	- 147629.262	- 53503.081
X1-2.Y2-1	-	2.304	+ 19.724		- 7.485	+ 29.123		- 5.993	+ 31.754
X1-2*SI1.2	-	1.0319	+ 2.2999		- 2.6906	+ 7.4718		- 2.1451	+ 5.9824
Y2-1*CO1.2	+	17.6353	- 1.1727		+ 27.1764	- 1.7315		+ 29.6501	- 1.8880
COSEC*S1.2	+	19.1749	+ 1.3018		+ 26.9035	+ 6.3070		+ 30.1983	+ 4.4954
キヨリ S1.S2		1.302	19.175		6.307	26.903		4.495	30.198
		X	Y						
1 14-25	-	147608.023	- 53524.207	14-30	- 147629.516	- 53532.635	14-31	- 147635.255	- 53534.835
DX DY	+	1.164	+ 0.583		+ 5.885	+ 2.267		+ 4.197	+ 1.609
3 14-55	-	147606.859	- 53523.624	14-56	- 147623.631	- 53530.368	14-57	- 147631.058	- 53533.226