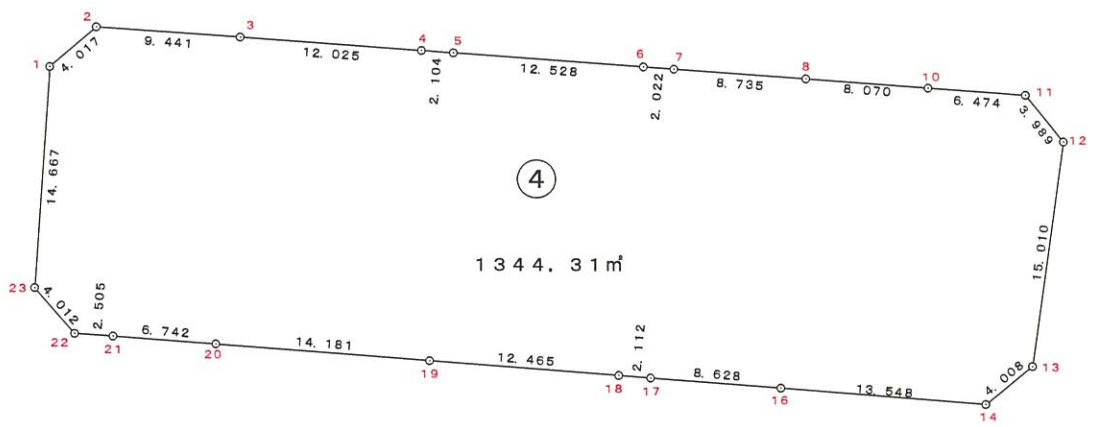
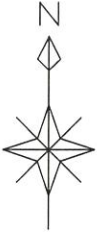


街区略図

街区番号

4



# 観測手簿

世界測地系

平成 19 年 3 月 29 日

現場名：出来形確認測量

作業名：清音上中島

測点	No. 59	観測日	7年3月28日	天候	晴軟風	観測者	FUJIMOTO
T4	偏心状況	B=C=P		器械高 i		器械高 g	
	測器 No	CE0371		測器	トプコンGTS-310 II	器械定数	0.000
	気温	16.0 °C		気圧	1009.2 hPa	気象補正	2 ppm
	開始時刻	14時41分		終了時刻	14時49分		

水平角	目盛	望遠鏡	方向	視準点名	観測角	結果	倍角	較差
	0	r	1	T5	0° 00' 00"	0° 00' 00"		
			2	G4-6	69° 27' 20"	69° 27' 20"	30	10
			3	G4-7	67° 51' 40"	67° 51' 40"	70	10
			4	G4-8	58° 12' 20"	58° 12' 20"	50	-10
			5	G4-9	55° 45' 30"	55° 45' 30"	50	10
			6	G4-10	42° 20' 00"	42° 20' 00"	0	0
			7	G4-11	21° 36' 20"	21° 36' 20"	40	0
			8	G4-12	9° 35' 40"	9° 35' 40"	70	10
		l	8	G4-12	189° 36' 00"	9° 35' 30"		
			7	G4-11	201° 36' 50"	21° 36' 20"		
			6	G4-10	222° 20' 30"	42° 20' 00"		
			5	G4-9	235° 45' 50"	55° 45' 20"		
			4	G4-8	238° 13' 00"	58° 12' 30"		
			3	G4-7	247° 52' 00"	67° 51' 30"		
			2	G4-6	249° 27' 40"	69° 27' 10"		
			1	T5	180° 00' 30"	0° 00' 00"		

結果	視準点名	平均値	倍角差	観測差
	T5	0° 00' 00"		
	G4-6	69° 27' 15"		
	G4-7	67° 51' 35"		
	G4-8	58° 12' 25"		
	G4-9	55° 45' 25"		
	G4-10	42° 20' 00"		
	G4-11	21° 36' 20"		
	G4-12	9° 35' 35"		

鉛直角	望遠鏡	視準点名	目標高	観測角	合計	$r - l = 2Z$	$90 \pm \alpha = Z$	$\alpha$
	r	G4-6		92° 36' 30"				-2° 36' 30"
	r	G4-7		92° 05' 40"				-2° 05' 40"
	r	G4-8		93° 10' 50"				-3° 10' 50"
	r	G4-9		93° 21' 10"				-3° 21' 10"
	r	G4-10		94° 15' 30"				-4° 15' 30"
	r	G4-11		95° 08' 00"				-5° 08' 00"
	r	G4-12		94° 27' 40"				-4° 27' 40"

### 高度定数差

距離	視準点名	目標高m	距離 1	距離 2	セット内較差 1	セット間較差	反射鏡定数	平均
			距離 3	距離 4	セット内較差 2			
	G4-6		32.638	32.641	3			32.640
	G4-7		30.809	30.805	4			30.807
	G4-8		23.338	23.339	1			23.339
	G4-9		22.083	22.082	1			22.083
	G4-10		17.513	17.513	0			17.513
	G4-11		14.466	14.465	1			14.466

# 観測手簿

世界測地系

平成 19 年 3 月 29 日

現場名：出来形確認測量

作業名：清音上中島

距離	視準点名	目標高m	距離 1	距離 2	セット内較差 1	セット間較差	反射鏡定数	平均
			距離 3	距離 4	セット内較差 2			
	G4-12		16.774	16.774	0			16.774

# 観測手簿

世界測地系

平成 19 年 3 月 29 日

現場名：出来形確認測量

作業名：清音上中島

測点 No. 69	観測日	7年3月28日	天候	晴軟風	観測者	FUJIMOTO
T5	偏心状況	B=C=P	器械高 i		器械高 g	
	測器 No	CE0371	測器	トプコンGTS-310 II	器械定数	0.000
	気温	16.0 °C	気圧	1009.2 hPa	気象補正	2 ppm
	開始時刻	14時53分	終了時刻	15時0分		

水平角	目盛	望遠鏡	方向	視準点名	観測角	結果	倍角	較差
	0	r	1	T6	0° 00' 00"	0° 00' 00"		
			2	G4-13	124° 09' 00"	124° 09' 00"	110	10
			3	G4-14	96° 27' 00"	96° 27' 00"	10	-10
			4	G4-15	86° 29' 50"	86° 29' 50"	110	-10
			5	G4-16	85° 58' 50"	85° 58' 50"	100	0
			6	G4-17	84° 05' 10"	84° 05' 10"	30	-10
			7	G4-18	83° 46' 40"	83° 46' 40"	70	10
		l	7	G4-18	263° 46' 50"	83° 46' 30"		
			6	G4-17	264° 05' 40"	84° 05' 20"		
			5	G4-16	265° 59' 10"	85° 58' 50"		
			4	G4-15	266° 30' 20"	86° 30' 00"		
			3	G4-14	276° 27' 30"	96° 27' 10"		
			2	G4-13	304° 09' 10"	124° 08' 50"		
			1	T6	180° 00' 20"	0° 00' 00"		

結果	視準点名	平均値	倍角差	観測差
	T6	0° 00' 00"		
	G4-13	124° 08' 55"		
	G4-14	96° 27' 05"		
	G4-15	86° 29' 55"		
	G4-16	85° 58' 50"		
	G4-17	84° 05' 15"		
	G4-18	83° 46' 35"		

鉛直角	望遠鏡	視準点名	目標高	観測角	合計	$r - l = 2Z$	$90 \pm \alpha = Z$	$\alpha$
	r	G4-13		99° 45' 40"				-9° 45' 40"
	r	G4-14		98° 26' 30"				-8° 26' 30"
	r	G4-15		93° 28' 50"				-3° 28' 50"
	r	G4-16		93° 13' 40"				-3° 13' 40"
	r	G4-17		91° 45' 50"				-1° 45' 50"
	r	G4-18		92° 00' 10"				-2° 00' 10"

## 高度定数差

距離	視準点名	目標高m	距離 1 距離 3	距離 2 距離 4	レイト内較差 1 レイト内較差 2	レイト間較差	反射鏡定数	平均
	G4-13		7.629	7.631	2			7.630
	G4-14		8.715	8.715	0			8.715
	G4-15		20.396	20.396	0			20.396
	G4-16		21.970	21.969	1			21.970
	G4-17		30.535	30.534	1			30.535
	G4-18		32.645	32.646	1			32.646

# 観測手簿

世界測地系

平成 19 年 3 月 29 日

現場名：出来形確認測量

作業名：清音上中島

測点	No. 83	観測日	7年3月28日	天候	晴軟風	観測者	FUJIMOTO
T22	偏心状況	B=C=P		器械高 i		器械高 g	
	測器 No	CE0371		測器	トプコンGTS-310 II	器械定数	0.000
	気温	16.0 °C		気圧	1009.2 hPa	気象補正	2 ppm
	開始時刻	15時5分		終了時刻	15時12分		

水平角	目盛	望遠鏡	方向	視準点名	観測角	結果	倍角	較差
	0	r	1	T21	0° 00' 00"	0° 00' 00"		
			2	G4-19	36° 16' 30"	36° 16' 30"	50	10
			3	G4-20	18° 58' 30"	18° 58' 30"	140	40
			4	G4-21	9° 02' 30"	9° 02' 30"	30	30
			5	G4-22	5° 11' 00"	5° 11' 00"	70	50
			6	G4-23	0° 41' 40"	0° 41' 40"	50	30
		l	6	G4-23	180° 42' 00"	0° 41' 10"		
			5	G4-22	185° 11' 00"	5° 10' 10"		
			4	G4-21	189° 02' 50"	9° 02' 00"		
			3	G4-20	198° 58' 40"	18° 57' 50"		
			2	G4-19	216° 17' 10"	36° 16' 20"		
			1	T21	180° 00' 50"	0° 00' 00"		

結果	視準点名	平均値	倍角差	観測差
	T21	0° 00' 00"		
	G4-19	36° 16' 25"		
	G4-20	18° 58' 10"		
	G4-21	9° 02' 15"		
	G4-22	5° 10' 35"		
	G4-23	0° 41' 25"		

鉛直角	望遠鏡	視準点名	目標高	観測角	合計	$r - l = 2Z$	$90 \pm \alpha = Z$	$\alpha$
	r	G4-19		91° 13' 20"				-1° 13' 20"
	r	G4-20		91° 42' 50"				-1° 42' 50"
	r	G4-21		91° 48' 00"				-1° 48' 00"
	r	G4-22		91° 47' 30"				-1° 47' 30"
	r	G4-23		91° 40' 00"				-1° 40' 00"

高度定数差

距離	視準点名	目標高m	距離 1	距離 2	セット内較差 1	セット間較差	反射鏡定数	平均
			距離 3	距離 4	セット内較差 2			
	G4-19		45.215	45.215	0			45.215
	G4-20		38.666	38.666	0			38.666
	G4-21		37.080	37.078	2			37.079
	G4-22		36.775	36.777	2			36.776
	G4-23		39.461	39.460	1			39.461

# 観測手簿

世界測地系

平成 19 年 3 月 29 日

現場名：出来形確認測量

作業名：清音上中島

測点 No. 23	観測日	7年3月28日	天候	晴軟風	観測者	FUJIMOTO
T21	偏心状況	B=C=P	器械高 i		器械高 g	
	測器 No	CE0371	測器	トプコンGTS-310 II	器械定数	0.000
	気温	16.0 °C	気圧	1009.2 hPa	気象補正	2 ppm
	開始時刻	15時17分	終了時刻	15時29分		

水平角	目盛	望遠鏡	方向	視準点名	観測角	結果	倍角	較差
削除	0	r	1	T2	0° 00' 00"	0° 00' 00"		
			2	G4-1	9° 18' 00"	9° 18' 00"	100	20
			3	G4-2	22° 35' 50"	22° 35' 50"	70	30
削除			4	G4-3	54° 55' 40"	54° 55' 40"	130	70
			5	G4-4	72° 04' 00"	72° 04' 00"	60	60
削除			6	G4-5	73° 47' 10"	73° 47' 10"	70	70
削除		l	6	G4-5	253° 47' 00"	73° 46' 00"		
			5	G4-4	252° 04' 00"	72° 03' 00"		
削除			4	G4-3	234° 55' 30"	54° 54' 30"		
			3	G4-2	202° 36' 20"	22° 35' 20"		
			2	G4-1	189° 18' 40"	9° 17' 40"		
削除			1	T2	180° 01' 00"	0° 00' 00"		
再測	0	r	1	T2	0° 00' 00"	0° 00' 00"		
再測			4	G4-3	54° 54' 00"	54° 54' 00"	10	-10
再測			6	G4-5	73° 46' 20"	73° 46' 20"	40	0
再測		l	6	G4-5	253° 46' 30"	73° 46' 20"		
再測			4	G4-3	234° 54' 20"	54° 54' 10"		
再測			1	T2	180° 00' 10"	0° 00' 00"		

結果	視準点名	平均値	倍角差	観測差
	T2	0° 00' 00"		
	G4-1	9° 17' 50"		
	G4-2	22° 35' 35"		
	G4-3	54° 54' 05"		
	G4-4	72° 03' 30"		
	G4-5	73° 46' 20"		

鉛直角	望遠鏡	視準点名	目標高	観測角	合計	$r - l = 2Z$	$90 \pm \alpha = Z$	$\alpha$
	r	G4-1		98° 25' 10"				-8° 25' 10"
	r	G4-2		92° 59' 20"				-2° 59' 20"
	r	G4-3		93° 29' 50"				-3° 29' 50"
	r	G4-4		92° 44' 10"				-2° 44' 10"
	r	G4-5		92° 24' 30"				-2° 24' 30"

### 高度定数差

距離	視準点名	目標高m	距離 1	距離 2	セット内較差 1	セット間較差	反射鏡定数	平均
			距離 3	距離 4	セット内較差 2			
	G4-1		8.556	8.557	1			8.557
	G4-2		11.766	11.769	3			11.768
	G4-3		17.013	17.014	1			17.014
	G4-4		27.191	27.191	0			27.191
	G4-5		29.114	29.113	1			29.114

# 観測記簿

世界測地系

平成 19 年 3 月 29 日

現場名 出来形確認測量  
作業名 (清音上中島)

縮尺係数 0.999938

平均ジオイド高

器械点名	視準点名	夾角	斜距離	高度角	平均高度角	平均補正高度角	平均標高	球面距離	平面距離	器械高 g	目標高 m	垂直距離
T4	T5	0° 00' 00"					0.000					
T4	G4-6	69° 27' 15"	32.640	-2° 36' 30"	-2° 36' 30"		-0.743	32.606	32.604			-1.485
T4	G4-7	67° 51' 35"	30.807	-2° 05' 40"	-2° 05' 40"		-0.563	30.786	30.784			-1.126
T4	G4-8	58° 12' 25"	23.339	-3° 10' 50"	-3° 10' 50"		-0.648	23.303	23.302			-1.295
T4	G4-9	55° 45' 25"	22.083	-3° 21' 10"	-3° 21' 10"		-0.646	22.045	22.044			-1.291
T4	G4-10	42° 20' 00"	17.513	-4° 15' 30"	-4° 15' 30"		-0.650	17.465	17.464			-1.300
T4	G4-11	21° 36' 20"	14.466	-5° 08' 00"	-5° 08' 00"		-0.647	14.408	14.407			-1.294
T4	G4-12	9° 35' 35"	16.774	-4° 27' 40"	-4° 27' 40"		-0.653	16.723	16.722			-1.305
T5	T6	0° 00' 00"										
T5	G4-13	124° 08' 55"	7.630	-9° 45' 40"	-9° 45' 40"		-0.647	7.520	7.520			-1.294
T5	G4-14	96° 27' 05"	8.715	-8° 26' 30"	-8° 26' 30"		-0.640	8.621	8.620			-1.279
T5	G4-15	86° 29' 55"	20.396	-3° 28' 50"	-3° 28' 50"		-0.619	20.358	20.357			-1.238
T5	G4-16	85° 58' 50"	21.970	-3° 13' 40"	-3° 13' 40"		-0.619	21.935	21.934			-1.237
T5	G4-17	84° 05' 15"	30.535	-1° 45' 50"	-1° 45' 50"		-0.470	30.521	30.519			-0.940
T5	G4-18	83° 46' 35"	32.646	-2° 00' 10"	-2° 00' 10"		-0.571	32.626	32.624			-1.141
T22	T21	0° 00' 00"					0.000					
T22	G4-19	36° 16' 25"	45.215	-1° 13' 20"	-1° 13' 20"		-0.482	45.205	45.202			-0.964
T22	G4-20	18° 58' 10"	38.666	-1° 42' 50"	-1° 42' 50"		-0.578	38.649	38.647			-1.156
T22	G4-21	9° 02' 15"	37.079	-1° 48' 00"	-1° 48' 00"		-0.583	37.061	37.059			-1.165
T22	G4-22	5° 10' 35"	36.776	-1° 47' 30"	-1° 47' 30"		-0.575	36.758	36.756			-1.150
T22	G4-23	0° 41' 25"	39.461	-1° 40' 00"	-1° 40' 00"		-0.574	39.444	39.442			-1.148
T21	T2	0° 00' 00"										
T21	G4-1	9° 17' 50"	8.557	-8° 25' 10"	-8° 25' 10"		-0.627	8.465	8.464			-1.253
T21	G4-2	22° 35' 35"	11.768	-2° 59' 20"	-2° 59' 20"		-0.307	11.752	11.751			-0.614
T21	G4-3	54° 54' 05"	17.014	-3° 29' 50"	-3° 29' 50"		-0.519	16.982	16.981			-1.038
T21	G4-4	72° 03' 30"	27.191	-2° 44' 10"	-2° 44' 10"		-0.649	27.160	27.158			-1.298
T21	G4-5	73° 46' 20"	29.114	-2° 24' 30"	-2° 24' 30"		-0.612	29.088	29.086			-1.223

# トラバース計算 計算書

世界測地系

平成 19 年 3 月 29 日

現場名：出来形確認測量

作業名：(清音上中島)

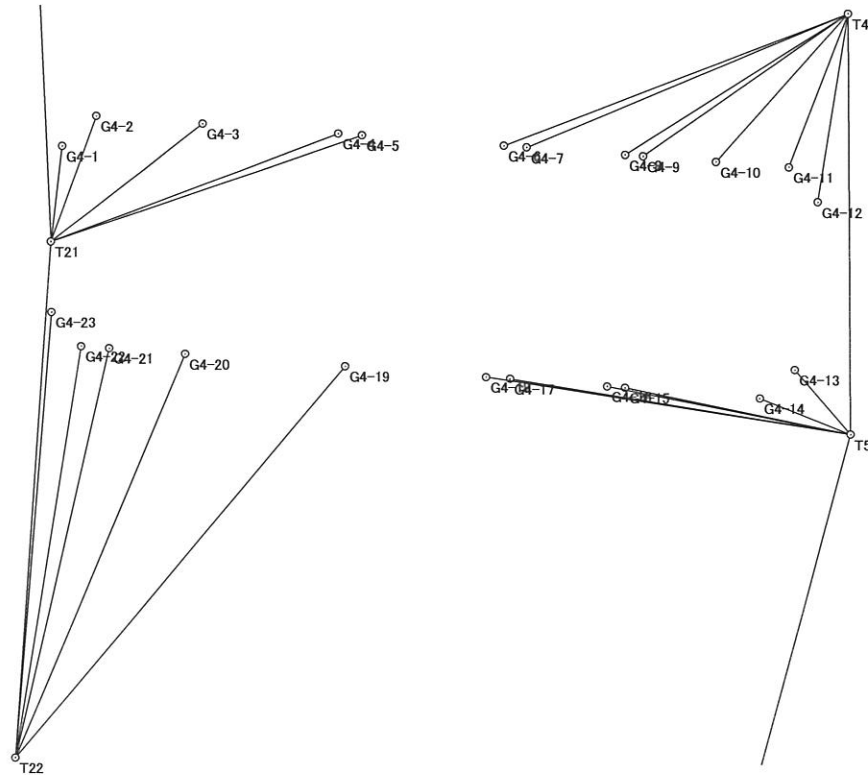
2次元平面距離開放放射

器械点	視準点	観測角	方向角	距離	cos	sin	ΔX	ΔY	X	Y	点名	点番
T4	T5		179° 43' 20"						-150727.039	-55069.978	T4	85
T4	G4-6	69° 27' 15"	249° 10' 35"	32.604	-0.355492166	-0.934679260	-11.590	-30.474	-150738.629	-55100.452	G4-6	165
T4	G4-7	67° 51' 35"	247° 34' 55"	30.784	-0.381361709	-0.924425901	-11.740	-28.458	-150738.779	-55098.436	G4-7	166
T4	G4-8	58° 12' 25"	237° 55' 45"	23.302	-0.530967280	-0.847392322	-12.373	-19.746	-150739.412	-55089.724	G4-8	167
T4	G4-9	55° 45' 25"	235° 28' 45"	22.044	-0.566705860	-0.823920183	-12.492	-18.162	-150739.531	-55088.140	G4-9	168
T4	G4-10	42° 20' 00"	222° 03' 20"	17.464	-0.742495669	-0.669850865	-12.967	-11.698	-150740.006	-55081.676	G4-10	169
T4	G4-11	21° 36' 20"	201° 19' 40"	14.407	-0.931515009	-0.363702884	-13.420	-5.240	-150740.459	-55075.218	G4-11	170
T4	G4-12	9° 35' 35"	189° 18' 55"	16.722	-0.986812590	-0.161866958	-16.501	-2.707	-150743.540	-55072.685	G4-12	171
T5	T6		195° 08' 15"						-150764.114	-55069.799	T5	86
T5	G4-13	124° 08' 55"	319° 17' 10"	7.520	0.757976241	-0.652282162	5.700	-4.905	-150758.414	-55074.704	G4-13	172
T5	G4-14	96° 27' 05"	291° 35' 20"	8.620	0.367944238	-0.929847857	3.172	-8.015	-150760.942	-55077.814	G4-14	173
T5	G4-15	86° 29' 55"	281° 38' 10"	20.357	0.201695266	-0.979448324	4.106	-19.939	-150760.008	-55089.738	G4-15	174
T5	G4-16	85° 58' 50"	281° 07' 05"	21.934	0.192831191	-0.981231946	4.230	-21.522	-150759.884	-55091.321	G4-16	175
T5	G4-17	84° 05' 15"	279° 13' 30"	30.519	0.160311892	-0.987066410	4.893	-30.124	-150759.221	-55099.923	G4-17	176
T5	G4-18	83° 46' 35"	278° 54' 50"	32.624	0.154949870	-0.987922334	5.055	-32.230	-150759.059	-55102.029	G4-18	177
T22	T21		3° 59' 21"						-150792.600	-55143.672	T22	103
T22	G4-19	36° 16' 25"	40° 15' 46"	45.202	0.763088356	0.646294175	34.493	29.214	-150758.107	-55114.458	G4-19	178
T22	G4-20	18° 58' 10"	22° 57' 31"	38.647	0.920786867	0.390066079	35.586	15.075	-150757.014	-55128.597	G4-20	179
T22	G4-21	9° 02' 15"	13° 01' 36"	37.059	0.974265262	0.225404522	36.105	8.353	-150756.495	-55135.319	G4-21	180
T22	G4-22	5° 10' 35"	9° 09' 56"	36.756	0.987232202	0.159287723	36.287	5.855	-150756.313	-55137.817	G4-22	181
T22	G4-23	0° 41' 25"	4° 40' 46"	39.442	0.996666719	0.081580948	39.311	3.218	-150753.289	-55140.454	G4-23	182
T21	T2		357° 30' 57"						-150747.058	-55140.496	T21	102
T21	G4-1	9° 17' 50"	6° 48' 47"	8.464	0.992938503	0.118630225	8.404	1.004	-150738.654	-55139.492	G4-1	183
T21	G4-2	22° 35' 35"	20° 06' 32"	11.751	0.939040925	0.343805382	11.035	4.040	-150736.023	-55136.456	G4-2	184
T21	G4-3	54° 54' 05"	52° 25' 02"	16.981	0.609906986	0.792473008	10.357	13.457	-150736.701	-55127.039	G4-3	185
T21	G4-4	72° 03' 30"	69° 34' 27"	27.158	0.348994611	0.937124731	9.478	25.450	-150737.580	-55115.046	G4-4	186
T21	G4-5	73° 46' 20"	71° 17' 17"	29.086	0.320810448	0.947143419	9.331	27.549	-150737.727	-55112.947	G4-5	187

# トラバース計算 計算書

世界測地系  
平成 19 年 3 月 29 日

現場名：出来形確認測量  
作業名：(清音上中島)



## 距離・方向角の計算書

世界測地系

平成 19 年 3 月 29 日

現場名:出来形確認測量

縮尺係数 0.999938  
辺の総合計 167.293

No	点番	点名	X 座標	Y 座標	平面距離	球面距離	方向角	夾角																																																																																																																																																																																																																																																																				
1	183	G4-1	-150738.654	-55139.492	4.017	4.017	49° 05' 16"	225° 01' 49"																																																																																																																																																																																																																																																																				
	184	G4-2	-150736.023	-55136.456					2	184	G4-2	-150736.023	-55136.456	9.441	9.442	94° 07' 05"	180° 04' 26"	185	G4-3	-150736.701	-55127.039	3	185	G4-3	-150736.701	-55127.039	12.025	12.026	94° 11' 31"	179° 48' 51"	186	G4-4	-150737.580	-55115.046	4	186	G4-4	-150737.580	-55115.046	2.104	2.104	94° 00' 22"	180° 07' 22"	187	G4-5	-150737.727	-55112.947	5	187	G4-5	-150737.727	-55112.947	12.528	12.529	94° 07' 44"	180° 07' 35"	165	G4-6	-150738.629	-55100.452	6	165	G4-6	-150738.629	-55100.452	2.022	2.022	94° 15' 19"	179° 54' 02"	166	G4-7	-150738.779	-55098.436	7	166	G4-7	-150738.779	-55098.436	8.735	8.736	94° 09' 21"	180° 03' 55"	167	G4-8	-150739.412	-55089.724	8	167	G4-8	-150739.412	-55089.724	8.070	8.071	94° 13' 16"	179° 47' 29"	169	G4-10	-150740.006	-55081.676	9	169	G4-10	-150740.006	-55081.676	6.474	6.474	94° 00' 45"	226° 33' 46"	170	G4-11	-150740.459	-55075.218	10	170	G4-11	-150740.459	-55075.218	3.989	3.989	140° 34' 31"	227° 09' 17"	171	G4-12	-150743.540	-55072.685	11	171	G4-12	-150743.540	-55072.685	15.010	15.011	187° 43' 48"	223° 09' 49"	172	G4-13	-150758.414	-55074.704	12	172	G4-13	-150758.414	-55074.704	4.008	4.008	230° 53' 37"	223° 35' 07"	173	G4-14	-150760.942	-55077.814	13	173	G4-14	-150760.942	-55077.814	13.548	13.549	274° 28' 44"	179° 55' 43"	175	G4-16	-150759.884	-55091.321	14	175	G4-16	-150759.884	-55091.321	8.628	8.629	274° 24' 27"	179° 59' 28"	176	G4-17	-150759.221	-55099.923	15	176	G4-17	-150759.221	-55099.923	2.112	2.112	274° 23' 55"	179° 58' 53"	177	G4-18	-150759.059	-55102.029	16	177	G4-18	-150759.059	-55102.029	12.465	12.466	274° 22' 48"	180° 02' 25"	178	G4-19	-150758.107	-55114.458	17	178	G4-19	-150758.107	-55114.458	14.181	14.182	274° 25' 13"	179° 59' 41"	179	G4-20	-150757.014	-55128.597	18	179	G4-20	-150757.014	-55128.597	6.742	6.742	274° 24' 54"	179° 45' 08"	180	G4-21	-150756.495	-55135.319	19	180	G4-21	-150756.495	-55135.319	2.505	2.505	274° 10' 02"	224° 44' 37"	181	G4-22	-150756.313	-55137.817	20	181	G4-22	-150756.313	-55137.817	4.012	4.012	318° 54' 39"	224° 51' 00"	182	G4-23	-150753.289	-55140.454	21	182	G4-23	-150753.289	-55140.454	14.667	14.668	3° 45' 39"			183	G4-1	-150738.654
2	184	G4-2	-150736.023	-55136.456	9.441	9.442	94° 07' 05"	180° 04' 26"																																																																																																																																																																																																																																																																				
	185	G4-3	-150736.701	-55127.039					3	185	G4-3	-150736.701	-55127.039	12.025	12.026	94° 11' 31"	179° 48' 51"	186	G4-4	-150737.580	-55115.046	4	186	G4-4	-150737.580	-55115.046	2.104	2.104	94° 00' 22"	180° 07' 22"	187	G4-5	-150737.727	-55112.947	5	187	G4-5	-150737.727	-55112.947	12.528	12.529	94° 07' 44"	180° 07' 35"	165	G4-6	-150738.629	-55100.452	6	165	G4-6	-150738.629	-55100.452	2.022	2.022	94° 15' 19"	179° 54' 02"	166	G4-7	-150738.779	-55098.436	7	166	G4-7	-150738.779	-55098.436	8.735	8.736	94° 09' 21"	180° 03' 55"	167	G4-8	-150739.412	-55089.724	8	167	G4-8	-150739.412	-55089.724	8.070	8.071	94° 13' 16"	179° 47' 29"	169	G4-10	-150740.006	-55081.676	9	169	G4-10	-150740.006	-55081.676	6.474	6.474	94° 00' 45"	226° 33' 46"	170	G4-11	-150740.459	-55075.218	10	170	G4-11	-150740.459	-55075.218	3.989	3.989	140° 34' 31"	227° 09' 17"	171	G4-12	-150743.540	-55072.685	11	171	G4-12	-150743.540	-55072.685	15.010	15.011	187° 43' 48"	223° 09' 49"	172	G4-13	-150758.414	-55074.704	12	172	G4-13	-150758.414	-55074.704	4.008	4.008	230° 53' 37"	223° 35' 07"	173	G4-14	-150760.942	-55077.814	13	173	G4-14	-150760.942	-55077.814	13.548	13.549	274° 28' 44"	179° 55' 43"	175	G4-16	-150759.884	-55091.321	14	175	G4-16	-150759.884	-55091.321	8.628	8.629	274° 24' 27"	179° 59' 28"	176	G4-17	-150759.221	-55099.923	15	176	G4-17	-150759.221	-55099.923	2.112	2.112	274° 23' 55"	179° 58' 53"	177	G4-18	-150759.059	-55102.029	16	177	G4-18	-150759.059	-55102.029	12.465	12.466	274° 22' 48"	180° 02' 25"	178	G4-19	-150758.107	-55114.458	17	178	G4-19	-150758.107	-55114.458	14.181	14.182	274° 25' 13"	179° 59' 41"	179	G4-20	-150757.014	-55128.597	18	179	G4-20	-150757.014	-55128.597	6.742	6.742	274° 24' 54"	179° 45' 08"	180	G4-21	-150756.495	-55135.319	19	180	G4-21	-150756.495	-55135.319	2.505	2.505	274° 10' 02"	224° 44' 37"	181	G4-22	-150756.313	-55137.817	20	181	G4-22	-150756.313	-55137.817	4.012	4.012	318° 54' 39"	224° 51' 00"	182	G4-23	-150753.289	-55140.454	21	182	G4-23	-150753.289	-55140.454	14.667	14.668	3° 45' 39"			183	G4-1	-150738.654	-55139.492												
3	185	G4-3	-150736.701	-55127.039	12.025	12.026	94° 11' 31"	179° 48' 51"																																																																																																																																																																																																																																																																				
	186	G4-4	-150737.580	-55115.046					4	186	G4-4	-150737.580	-55115.046	2.104	2.104	94° 00' 22"	180° 07' 22"	187	G4-5	-150737.727	-55112.947	5	187	G4-5	-150737.727	-55112.947	12.528	12.529	94° 07' 44"	180° 07' 35"	165	G4-6	-150738.629	-55100.452	6	165	G4-6	-150738.629	-55100.452	2.022	2.022	94° 15' 19"	179° 54' 02"	166	G4-7	-150738.779	-55098.436	7	166	G4-7	-150738.779	-55098.436	8.735	8.736	94° 09' 21"	180° 03' 55"	167	G4-8	-150739.412	-55089.724	8	167	G4-8	-150739.412	-55089.724	8.070	8.071	94° 13' 16"	179° 47' 29"	169	G4-10	-150740.006	-55081.676	9	169	G4-10	-150740.006	-55081.676	6.474	6.474	94° 00' 45"	226° 33' 46"	170	G4-11	-150740.459	-55075.218	10	170	G4-11	-150740.459	-55075.218	3.989	3.989	140° 34' 31"	227° 09' 17"	171	G4-12	-150743.540	-55072.685	11	171	G4-12	-150743.540	-55072.685	15.010	15.011	187° 43' 48"	223° 09' 49"	172	G4-13	-150758.414	-55074.704	12	172	G4-13	-150758.414	-55074.704	4.008	4.008	230° 53' 37"	223° 35' 07"	173	G4-14	-150760.942	-55077.814	13	173	G4-14	-150760.942	-55077.814	13.548	13.549	274° 28' 44"	179° 55' 43"	175	G4-16	-150759.884	-55091.321	14	175	G4-16	-150759.884	-55091.321	8.628	8.629	274° 24' 27"	179° 59' 28"	176	G4-17	-150759.221	-55099.923	15	176	G4-17	-150759.221	-55099.923	2.112	2.112	274° 23' 55"	179° 58' 53"	177	G4-18	-150759.059	-55102.029	16	177	G4-18	-150759.059	-55102.029	12.465	12.466	274° 22' 48"	180° 02' 25"	178	G4-19	-150758.107	-55114.458	17	178	G4-19	-150758.107	-55114.458	14.181	14.182	274° 25' 13"	179° 59' 41"	179	G4-20	-150757.014	-55128.597	18	179	G4-20	-150757.014	-55128.597	6.742	6.742	274° 24' 54"	179° 45' 08"	180	G4-21	-150756.495	-55135.319	19	180	G4-21	-150756.495	-55135.319	2.505	2.505	274° 10' 02"	224° 44' 37"	181	G4-22	-150756.313	-55137.817	20	181	G4-22	-150756.313	-55137.817	4.012	4.012	318° 54' 39"	224° 51' 00"	182	G4-23	-150753.289	-55140.454	21	182	G4-23	-150753.289	-55140.454	14.667	14.668	3° 45' 39"			183	G4-1	-150738.654	-55139.492																									
4	186	G4-4	-150737.580	-55115.046	2.104	2.104	94° 00' 22"	180° 07' 22"																																																																																																																																																																																																																																																																				
	187	G4-5	-150737.727	-55112.947					5	187	G4-5	-150737.727	-55112.947	12.528	12.529	94° 07' 44"	180° 07' 35"	165	G4-6	-150738.629	-55100.452	6	165	G4-6	-150738.629	-55100.452	2.022	2.022	94° 15' 19"	179° 54' 02"	166	G4-7	-150738.779	-55098.436	7	166	G4-7	-150738.779	-55098.436	8.735	8.736	94° 09' 21"	180° 03' 55"	167	G4-8	-150739.412	-55089.724	8	167	G4-8	-150739.412	-55089.724	8.070	8.071	94° 13' 16"	179° 47' 29"	169	G4-10	-150740.006	-55081.676	9	169	G4-10	-150740.006	-55081.676	6.474	6.474	94° 00' 45"	226° 33' 46"	170	G4-11	-150740.459	-55075.218	10	170	G4-11	-150740.459	-55075.218	3.989	3.989	140° 34' 31"	227° 09' 17"	171	G4-12	-150743.540	-55072.685	11	171	G4-12	-150743.540	-55072.685	15.010	15.011	187° 43' 48"	223° 09' 49"	172	G4-13	-150758.414	-55074.704	12	172	G4-13	-150758.414	-55074.704	4.008	4.008	230° 53' 37"	223° 35' 07"	173	G4-14	-150760.942	-55077.814	13	173	G4-14	-150760.942	-55077.814	13.548	13.549	274° 28' 44"	179° 55' 43"	175	G4-16	-150759.884	-55091.321	14	175	G4-16	-150759.884	-55091.321	8.628	8.629	274° 24' 27"	179° 59' 28"	176	G4-17	-150759.221	-55099.923	15	176	G4-17	-150759.221	-55099.923	2.112	2.112	274° 23' 55"	179° 58' 53"	177	G4-18	-150759.059	-55102.029	16	177	G4-18	-150759.059	-55102.029	12.465	12.466	274° 22' 48"	180° 02' 25"	178	G4-19	-150758.107	-55114.458	17	178	G4-19	-150758.107	-55114.458	14.181	14.182	274° 25' 13"	179° 59' 41"	179	G4-20	-150757.014	-55128.597	18	179	G4-20	-150757.014	-55128.597	6.742	6.742	274° 24' 54"	179° 45' 08"	180	G4-21	-150756.495	-55135.319	19	180	G4-21	-150756.495	-55135.319	2.505	2.505	274° 10' 02"	224° 44' 37"	181	G4-22	-150756.313	-55137.817	20	181	G4-22	-150756.313	-55137.817	4.012	4.012	318° 54' 39"	224° 51' 00"	182	G4-23	-150753.289	-55140.454	21	182	G4-23	-150753.289	-55140.454	14.667	14.668	3° 45' 39"			183	G4-1	-150738.654	-55139.492																																						
5	187	G4-5	-150737.727	-55112.947	12.528	12.529	94° 07' 44"	180° 07' 35"																																																																																																																																																																																																																																																																				
	165	G4-6	-150738.629	-55100.452					6	165	G4-6	-150738.629	-55100.452	2.022	2.022	94° 15' 19"	179° 54' 02"	166	G4-7	-150738.779	-55098.436	7	166	G4-7	-150738.779	-55098.436	8.735	8.736	94° 09' 21"	180° 03' 55"	167	G4-8	-150739.412	-55089.724	8	167	G4-8	-150739.412	-55089.724	8.070	8.071	94° 13' 16"	179° 47' 29"	169	G4-10	-150740.006	-55081.676	9	169	G4-10	-150740.006	-55081.676	6.474	6.474	94° 00' 45"	226° 33' 46"	170	G4-11	-150740.459	-55075.218	10	170	G4-11	-150740.459	-55075.218	3.989	3.989	140° 34' 31"	227° 09' 17"	171	G4-12	-150743.540	-55072.685	11	171	G4-12	-150743.540	-55072.685	15.010	15.011	187° 43' 48"	223° 09' 49"	172	G4-13	-150758.414	-55074.704	12	172	G4-13	-150758.414	-55074.704	4.008	4.008	230° 53' 37"	223° 35' 07"	173	G4-14	-150760.942	-55077.814	13	173	G4-14	-150760.942	-55077.814	13.548	13.549	274° 28' 44"	179° 55' 43"	175	G4-16	-150759.884	-55091.321	14	175	G4-16	-150759.884	-55091.321	8.628	8.629	274° 24' 27"	179° 59' 28"	176	G4-17	-150759.221	-55099.923	15	176	G4-17	-150759.221	-55099.923	2.112	2.112	274° 23' 55"	179° 58' 53"	177	G4-18	-150759.059	-55102.029	16	177	G4-18	-150759.059	-55102.029	12.465	12.466	274° 22' 48"	180° 02' 25"	178	G4-19	-150758.107	-55114.458	17	178	G4-19	-150758.107	-55114.458	14.181	14.182	274° 25' 13"	179° 59' 41"	179	G4-20	-150757.014	-55128.597	18	179	G4-20	-150757.014	-55128.597	6.742	6.742	274° 24' 54"	179° 45' 08"	180	G4-21	-150756.495	-55135.319	19	180	G4-21	-150756.495	-55135.319	2.505	2.505	274° 10' 02"	224° 44' 37"	181	G4-22	-150756.313	-55137.817	20	181	G4-22	-150756.313	-55137.817	4.012	4.012	318° 54' 39"	224° 51' 00"	182	G4-23	-150753.289	-55140.454	21	182	G4-23	-150753.289	-55140.454	14.667	14.668	3° 45' 39"			183	G4-1	-150738.654	-55139.492																																																			
6	165	G4-6	-150738.629	-55100.452	2.022	2.022	94° 15' 19"	179° 54' 02"																																																																																																																																																																																																																																																																				
	166	G4-7	-150738.779	-55098.436					7	166	G4-7	-150738.779	-55098.436	8.735	8.736	94° 09' 21"	180° 03' 55"	167	G4-8	-150739.412	-55089.724	8	167	G4-8	-150739.412	-55089.724	8.070	8.071	94° 13' 16"	179° 47' 29"	169	G4-10	-150740.006	-55081.676	9	169	G4-10	-150740.006	-55081.676	6.474	6.474	94° 00' 45"	226° 33' 46"	170	G4-11	-150740.459	-55075.218	10	170	G4-11	-150740.459	-55075.218	3.989	3.989	140° 34' 31"	227° 09' 17"	171	G4-12	-150743.540	-55072.685	11	171	G4-12	-150743.540	-55072.685	15.010	15.011	187° 43' 48"	223° 09' 49"	172	G4-13	-150758.414	-55074.704	12	172	G4-13	-150758.414	-55074.704	4.008	4.008	230° 53' 37"	223° 35' 07"	173	G4-14	-150760.942	-55077.814	13	173	G4-14	-150760.942	-55077.814	13.548	13.549	274° 28' 44"	179° 55' 43"	175	G4-16	-150759.884	-55091.321	14	175	G4-16	-150759.884	-55091.321	8.628	8.629	274° 24' 27"	179° 59' 28"	176	G4-17	-150759.221	-55099.923	15	176	G4-17	-150759.221	-55099.923	2.112	2.112	274° 23' 55"	179° 58' 53"	177	G4-18	-150759.059	-55102.029	16	177	G4-18	-150759.059	-55102.029	12.465	12.466	274° 22' 48"	180° 02' 25"	178	G4-19	-150758.107	-55114.458	17	178	G4-19	-150758.107	-55114.458	14.181	14.182	274° 25' 13"	179° 59' 41"	179	G4-20	-150757.014	-55128.597	18	179	G4-20	-150757.014	-55128.597	6.742	6.742	274° 24' 54"	179° 45' 08"	180	G4-21	-150756.495	-55135.319	19	180	G4-21	-150756.495	-55135.319	2.505	2.505	274° 10' 02"	224° 44' 37"	181	G4-22	-150756.313	-55137.817	20	181	G4-22	-150756.313	-55137.817	4.012	4.012	318° 54' 39"	224° 51' 00"	182	G4-23	-150753.289	-55140.454	21	182	G4-23	-150753.289	-55140.454	14.667	14.668	3° 45' 39"			183	G4-1	-150738.654	-55139.492																																																																
7	166	G4-7	-150738.779	-55098.436	8.735	8.736	94° 09' 21"	180° 03' 55"																																																																																																																																																																																																																																																																				
	167	G4-8	-150739.412	-55089.724					8	167	G4-8	-150739.412	-55089.724	8.070	8.071	94° 13' 16"	179° 47' 29"	169	G4-10	-150740.006	-55081.676	9	169	G4-10	-150740.006	-55081.676	6.474	6.474	94° 00' 45"	226° 33' 46"	170	G4-11	-150740.459	-55075.218	10	170	G4-11	-150740.459	-55075.218	3.989	3.989	140° 34' 31"	227° 09' 17"	171	G4-12	-150743.540	-55072.685	11	171	G4-12	-150743.540	-55072.685	15.010	15.011	187° 43' 48"	223° 09' 49"	172	G4-13	-150758.414	-55074.704	12	172	G4-13	-150758.414	-55074.704	4.008	4.008	230° 53' 37"	223° 35' 07"	173	G4-14	-150760.942	-55077.814	13	173	G4-14	-150760.942	-55077.814	13.548	13.549	274° 28' 44"	179° 55' 43"	175	G4-16	-150759.884	-55091.321	14	175	G4-16	-150759.884	-55091.321	8.628	8.629	274° 24' 27"	179° 59' 28"	176	G4-17	-150759.221	-55099.923	15	176	G4-17	-150759.221	-55099.923	2.112	2.112	274° 23' 55"	179° 58' 53"	177	G4-18	-150759.059	-55102.029	16	177	G4-18	-150759.059	-55102.029	12.465	12.466	274° 22' 48"	180° 02' 25"	178	G4-19	-150758.107	-55114.458	17	178	G4-19	-150758.107	-55114.458	14.181	14.182	274° 25' 13"	179° 59' 41"	179	G4-20	-150757.014	-55128.597	18	179	G4-20	-150757.014	-55128.597	6.742	6.742	274° 24' 54"	179° 45' 08"	180	G4-21	-150756.495	-55135.319	19	180	G4-21	-150756.495	-55135.319	2.505	2.505	274° 10' 02"	224° 44' 37"	181	G4-22	-150756.313	-55137.817	20	181	G4-22	-150756.313	-55137.817	4.012	4.012	318° 54' 39"	224° 51' 00"	182	G4-23	-150753.289	-55140.454	21	182	G4-23	-150753.289	-55140.454	14.667	14.668	3° 45' 39"			183	G4-1	-150738.654	-55139.492																																																																													
8	167	G4-8	-150739.412	-55089.724	8.070	8.071	94° 13' 16"	179° 47' 29"																																																																																																																																																																																																																																																																				
	169	G4-10	-150740.006	-55081.676					9	169	G4-10	-150740.006	-55081.676	6.474	6.474	94° 00' 45"	226° 33' 46"	170	G4-11	-150740.459	-55075.218	10	170	G4-11	-150740.459	-55075.218	3.989	3.989	140° 34' 31"	227° 09' 17"	171	G4-12	-150743.540	-55072.685	11	171	G4-12	-150743.540	-55072.685	15.010	15.011	187° 43' 48"	223° 09' 49"	172	G4-13	-150758.414	-55074.704	12	172	G4-13	-150758.414	-55074.704	4.008	4.008	230° 53' 37"	223° 35' 07"	173	G4-14	-150760.942	-55077.814	13	173	G4-14	-150760.942	-55077.814	13.548	13.549	274° 28' 44"	179° 55' 43"	175	G4-16	-150759.884	-55091.321	14	175	G4-16	-150759.884	-55091.321	8.628	8.629	274° 24' 27"	179° 59' 28"	176	G4-17	-150759.221	-55099.923	15	176	G4-17	-150759.221	-55099.923	2.112	2.112	274° 23' 55"	179° 58' 53"	177	G4-18	-150759.059	-55102.029	16	177	G4-18	-150759.059	-55102.029	12.465	12.466	274° 22' 48"	180° 02' 25"	178	G4-19	-150758.107	-55114.458	17	178	G4-19	-150758.107	-55114.458	14.181	14.182	274° 25' 13"	179° 59' 41"	179	G4-20	-150757.014	-55128.597	18	179	G4-20	-150757.014	-55128.597	6.742	6.742	274° 24' 54"	179° 45' 08"	180	G4-21	-150756.495	-55135.319	19	180	G4-21	-150756.495	-55135.319	2.505	2.505	274° 10' 02"	224° 44' 37"	181	G4-22	-150756.313	-55137.817	20	181	G4-22	-150756.313	-55137.817	4.012	4.012	318° 54' 39"	224° 51' 00"	182	G4-23	-150753.289	-55140.454	21	182	G4-23	-150753.289	-55140.454	14.667	14.668	3° 45' 39"			183	G4-1	-150738.654	-55139.492																																																																																										
9	169	G4-10	-150740.006	-55081.676	6.474	6.474	94° 00' 45"	226° 33' 46"																																																																																																																																																																																																																																																																				
	170	G4-11	-150740.459	-55075.218					10	170	G4-11	-150740.459	-55075.218	3.989	3.989	140° 34' 31"	227° 09' 17"	171	G4-12	-150743.540	-55072.685	11	171	G4-12	-150743.540	-55072.685	15.010	15.011	187° 43' 48"	223° 09' 49"	172	G4-13	-150758.414	-55074.704	12	172	G4-13	-150758.414	-55074.704	4.008	4.008	230° 53' 37"	223° 35' 07"	173	G4-14	-150760.942	-55077.814	13	173	G4-14	-150760.942	-55077.814	13.548	13.549	274° 28' 44"	179° 55' 43"	175	G4-16	-150759.884	-55091.321	14	175	G4-16	-150759.884	-55091.321	8.628	8.629	274° 24' 27"	179° 59' 28"	176	G4-17	-150759.221	-55099.923	15	176	G4-17	-150759.221	-55099.923	2.112	2.112	274° 23' 55"	179° 58' 53"	177	G4-18	-150759.059	-55102.029	16	177	G4-18	-150759.059	-55102.029	12.465	12.466	274° 22' 48"	180° 02' 25"	178	G4-19	-150758.107	-55114.458	17	178	G4-19	-150758.107	-55114.458	14.181	14.182	274° 25' 13"	179° 59' 41"	179	G4-20	-150757.014	-55128.597	18	179	G4-20	-150757.014	-55128.597	6.742	6.742	274° 24' 54"	179° 45' 08"	180	G4-21	-150756.495	-55135.319	19	180	G4-21	-150756.495	-55135.319	2.505	2.505	274° 10' 02"	224° 44' 37"	181	G4-22	-150756.313	-55137.817	20	181	G4-22	-150756.313	-55137.817	4.012	4.012	318° 54' 39"	224° 51' 00"	182	G4-23	-150753.289	-55140.454	21	182	G4-23	-150753.289	-55140.454	14.667	14.668	3° 45' 39"			183	G4-1	-150738.654	-55139.492																																																																																																							
10	170	G4-11	-150740.459	-55075.218	3.989	3.989	140° 34' 31"	227° 09' 17"																																																																																																																																																																																																																																																																				
	171	G4-12	-150743.540	-55072.685					11	171	G4-12	-150743.540	-55072.685	15.010	15.011	187° 43' 48"	223° 09' 49"	172	G4-13	-150758.414	-55074.704	12	172	G4-13	-150758.414	-55074.704	4.008	4.008	230° 53' 37"	223° 35' 07"	173	G4-14	-150760.942	-55077.814	13	173	G4-14	-150760.942	-55077.814	13.548	13.549	274° 28' 44"	179° 55' 43"	175	G4-16	-150759.884	-55091.321	14	175	G4-16	-150759.884	-55091.321	8.628	8.629	274° 24' 27"	179° 59' 28"	176	G4-17	-150759.221	-55099.923	15	176	G4-17	-150759.221	-55099.923	2.112	2.112	274° 23' 55"	179° 58' 53"	177	G4-18	-150759.059	-55102.029	16	177	G4-18	-150759.059	-55102.029	12.465	12.466	274° 22' 48"	180° 02' 25"	178	G4-19	-150758.107	-55114.458	17	178	G4-19	-150758.107	-55114.458	14.181	14.182	274° 25' 13"	179° 59' 41"	179	G4-20	-150757.014	-55128.597	18	179	G4-20	-150757.014	-55128.597	6.742	6.742	274° 24' 54"	179° 45' 08"	180	G4-21	-150756.495	-55135.319	19	180	G4-21	-150756.495	-55135.319	2.505	2.505	274° 10' 02"	224° 44' 37"	181	G4-22	-150756.313	-55137.817	20	181	G4-22	-150756.313	-55137.817	4.012	4.012	318° 54' 39"	224° 51' 00"	182	G4-23	-150753.289	-55140.454	21	182	G4-23	-150753.289	-55140.454	14.667	14.668	3° 45' 39"			183	G4-1	-150738.654	-55139.492																																																																																																																				
11	171	G4-12	-150743.540	-55072.685	15.010	15.011	187° 43' 48"	223° 09' 49"																																																																																																																																																																																																																																																																				
	172	G4-13	-150758.414	-55074.704					12	172	G4-13	-150758.414	-55074.704	4.008	4.008	230° 53' 37"	223° 35' 07"	173	G4-14	-150760.942	-55077.814	13	173	G4-14	-150760.942	-55077.814	13.548	13.549	274° 28' 44"	179° 55' 43"	175	G4-16	-150759.884	-55091.321	14	175	G4-16	-150759.884	-55091.321	8.628	8.629	274° 24' 27"	179° 59' 28"	176	G4-17	-150759.221	-55099.923	15	176	G4-17	-150759.221	-55099.923	2.112	2.112	274° 23' 55"	179° 58' 53"	177	G4-18	-150759.059	-55102.029	16	177	G4-18	-150759.059	-55102.029	12.465	12.466	274° 22' 48"	180° 02' 25"	178	G4-19	-150758.107	-55114.458	17	178	G4-19	-150758.107	-55114.458	14.181	14.182	274° 25' 13"	179° 59' 41"	179	G4-20	-150757.014	-55128.597	18	179	G4-20	-150757.014	-55128.597	6.742	6.742	274° 24' 54"	179° 45' 08"	180	G4-21	-150756.495	-55135.319	19	180	G4-21	-150756.495	-55135.319	2.505	2.505	274° 10' 02"	224° 44' 37"	181	G4-22	-150756.313	-55137.817	20	181	G4-22	-150756.313	-55137.817	4.012	4.012	318° 54' 39"	224° 51' 00"	182	G4-23	-150753.289	-55140.454	21	182	G4-23	-150753.289	-55140.454	14.667	14.668	3° 45' 39"			183	G4-1	-150738.654	-55139.492																																																																																																																																	
12	172	G4-13	-150758.414	-55074.704	4.008	4.008	230° 53' 37"	223° 35' 07"																																																																																																																																																																																																																																																																				
	173	G4-14	-150760.942	-55077.814					13	173	G4-14	-150760.942	-55077.814	13.548	13.549	274° 28' 44"	179° 55' 43"	175	G4-16	-150759.884	-55091.321	14	175	G4-16	-150759.884	-55091.321	8.628	8.629	274° 24' 27"	179° 59' 28"	176	G4-17	-150759.221	-55099.923	15	176	G4-17	-150759.221	-55099.923	2.112	2.112	274° 23' 55"	179° 58' 53"	177	G4-18	-150759.059	-55102.029	16	177	G4-18	-150759.059	-55102.029	12.465	12.466	274° 22' 48"	180° 02' 25"	178	G4-19	-150758.107	-55114.458	17	178	G4-19	-150758.107	-55114.458	14.181	14.182	274° 25' 13"	179° 59' 41"	179	G4-20	-150757.014	-55128.597	18	179	G4-20	-150757.014	-55128.597	6.742	6.742	274° 24' 54"	179° 45' 08"	180	G4-21	-150756.495	-55135.319	19	180	G4-21	-150756.495	-55135.319	2.505	2.505	274° 10' 02"	224° 44' 37"	181	G4-22	-150756.313	-55137.817	20	181	G4-22	-150756.313	-55137.817	4.012	4.012	318° 54' 39"	224° 51' 00"	182	G4-23	-150753.289	-55140.454	21	182	G4-23	-150753.289	-55140.454	14.667	14.668	3° 45' 39"			183	G4-1	-150738.654	-55139.492																																																																																																																																														
13	173	G4-14	-150760.942	-55077.814	13.548	13.549	274° 28' 44"	179° 55' 43"																																																																																																																																																																																																																																																																				
	175	G4-16	-150759.884	-55091.321					14	175	G4-16	-150759.884	-55091.321	8.628	8.629	274° 24' 27"	179° 59' 28"	176	G4-17	-150759.221	-55099.923	15	176	G4-17	-150759.221	-55099.923	2.112	2.112	274° 23' 55"	179° 58' 53"	177	G4-18	-150759.059	-55102.029	16	177	G4-18	-150759.059	-55102.029	12.465	12.466	274° 22' 48"	180° 02' 25"	178	G4-19	-150758.107	-55114.458	17	178	G4-19	-150758.107	-55114.458	14.181	14.182	274° 25' 13"	179° 59' 41"	179	G4-20	-150757.014	-55128.597	18	179	G4-20	-150757.014	-55128.597	6.742	6.742	274° 24' 54"	179° 45' 08"	180	G4-21	-150756.495	-55135.319	19	180	G4-21	-150756.495	-55135.319	2.505	2.505	274° 10' 02"	224° 44' 37"	181	G4-22	-150756.313	-55137.817	20	181	G4-22	-150756.313	-55137.817	4.012	4.012	318° 54' 39"	224° 51' 00"	182	G4-23	-150753.289	-55140.454	21	182	G4-23	-150753.289	-55140.454	14.667	14.668	3° 45' 39"			183	G4-1	-150738.654	-55139.492																																																																																																																																																											
14	175	G4-16	-150759.884	-55091.321	8.628	8.629	274° 24' 27"	179° 59' 28"																																																																																																																																																																																																																																																																				
	176	G4-17	-150759.221	-55099.923					15	176	G4-17	-150759.221	-55099.923	2.112	2.112	274° 23' 55"	179° 58' 53"	177	G4-18	-150759.059	-55102.029	16	177	G4-18	-150759.059	-55102.029	12.465	12.466	274° 22' 48"	180° 02' 25"	178	G4-19	-150758.107	-55114.458	17	178	G4-19	-150758.107	-55114.458	14.181	14.182	274° 25' 13"	179° 59' 41"	179	G4-20	-150757.014	-55128.597	18	179	G4-20	-150757.014	-55128.597	6.742	6.742	274° 24' 54"	179° 45' 08"	180	G4-21	-150756.495	-55135.319	19	180	G4-21	-150756.495	-55135.319	2.505	2.505	274° 10' 02"	224° 44' 37"	181	G4-22	-150756.313	-55137.817	20	181	G4-22	-150756.313	-55137.817	4.012	4.012	318° 54' 39"	224° 51' 00"	182	G4-23	-150753.289	-55140.454	21	182	G4-23	-150753.289	-55140.454	14.667	14.668	3° 45' 39"			183	G4-1	-150738.654	-55139.492																																																																																																																																																																								
15	176	G4-17	-150759.221	-55099.923	2.112	2.112	274° 23' 55"	179° 58' 53"																																																																																																																																																																																																																																																																				
	177	G4-18	-150759.059	-55102.029					16	177	G4-18	-150759.059	-55102.029	12.465	12.466	274° 22' 48"	180° 02' 25"	178	G4-19	-150758.107	-55114.458	17	178	G4-19	-150758.107	-55114.458	14.181	14.182	274° 25' 13"	179° 59' 41"	179	G4-20	-150757.014	-55128.597	18	179	G4-20	-150757.014	-55128.597	6.742	6.742	274° 24' 54"	179° 45' 08"	180	G4-21	-150756.495	-55135.319	19	180	G4-21	-150756.495	-55135.319	2.505	2.505	274° 10' 02"	224° 44' 37"	181	G4-22	-150756.313	-55137.817	20	181	G4-22	-150756.313	-55137.817	4.012	4.012	318° 54' 39"	224° 51' 00"	182	G4-23	-150753.289	-55140.454	21	182	G4-23	-150753.289	-55140.454	14.667	14.668	3° 45' 39"			183	G4-1	-150738.654	-55139.492																																																																																																																																																																																					
16	177	G4-18	-150759.059	-55102.029	12.465	12.466	274° 22' 48"	180° 02' 25"																																																																																																																																																																																																																																																																				
	178	G4-19	-150758.107	-55114.458					17	178	G4-19	-150758.107	-55114.458	14.181	14.182	274° 25' 13"	179° 59' 41"	179	G4-20	-150757.014	-55128.597	18	179	G4-20	-150757.014	-55128.597	6.742	6.742	274° 24' 54"	179° 45' 08"	180	G4-21	-150756.495	-55135.319	19	180	G4-21	-150756.495	-55135.319	2.505	2.505	274° 10' 02"	224° 44' 37"	181	G4-22	-150756.313	-55137.817	20	181	G4-22	-150756.313	-55137.817	4.012	4.012	318° 54' 39"	224° 51' 00"	182	G4-23	-150753.289	-55140.454	21	182	G4-23	-150753.289	-55140.454	14.667	14.668	3° 45' 39"			183	G4-1	-150738.654	-55139.492																																																																																																																																																																																																		
17	178	G4-19	-150758.107	-55114.458	14.181	14.182	274° 25' 13"	179° 59' 41"																																																																																																																																																																																																																																																																				
	179	G4-20	-150757.014	-55128.597					18	179	G4-20	-150757.014	-55128.597	6.742	6.742	274° 24' 54"	179° 45' 08"	180	G4-21	-150756.495	-55135.319	19	180	G4-21	-150756.495	-55135.319	2.505	2.505	274° 10' 02"	224° 44' 37"	181	G4-22	-150756.313	-55137.817	20	181	G4-22	-150756.313	-55137.817	4.012	4.012	318° 54' 39"	224° 51' 00"	182	G4-23	-150753.289	-55140.454	21	182	G4-23	-150753.289	-55140.454	14.667	14.668	3° 45' 39"			183	G4-1	-150738.654	-55139.492																																																																																																																																																																																																															
18	179	G4-20	-150757.014	-55128.597	6.742	6.742	274° 24' 54"	179° 45' 08"																																																																																																																																																																																																																																																																				
	180	G4-21	-150756.495	-55135.319					19	180	G4-21	-150756.495	-55135.319	2.505	2.505	274° 10' 02"	224° 44' 37"	181	G4-22	-150756.313	-55137.817	20	181	G4-22	-150756.313	-55137.817	4.012	4.012	318° 54' 39"	224° 51' 00"	182	G4-23	-150753.289	-55140.454	21	182	G4-23	-150753.289	-55140.454	14.667	14.668	3° 45' 39"			183	G4-1	-150738.654	-55139.492																																																																																																																																																																																																																												
19	180	G4-21	-150756.495	-55135.319	2.505	2.505	274° 10' 02"	224° 44' 37"																																																																																																																																																																																																																																																																				
	181	G4-22	-150756.313	-55137.817					20	181	G4-22	-150756.313	-55137.817	4.012	4.012	318° 54' 39"	224° 51' 00"	182	G4-23	-150753.289	-55140.454	21	182	G4-23	-150753.289	-55140.454	14.667	14.668	3° 45' 39"			183	G4-1	-150738.654	-55139.492																																																																																																																																																																																																																																									
20	181	G4-22	-150756.313	-55137.817	4.012	4.012	318° 54' 39"	224° 51' 00"																																																																																																																																																																																																																																																																				
	182	G4-23	-150753.289	-55140.454					21	182	G4-23	-150753.289	-55140.454	14.667	14.668	3° 45' 39"			183	G4-1	-150738.654	-55139.492																																																																																																																																																																																																																																																						
21	182	G4-23	-150753.289	-55140.454	14.667	14.668	3° 45' 39"																																																																																																																																																																																																																																																																					
	183	G4-1	-150738.654	-55139.492																																																																																																																																																																																																																																																																								

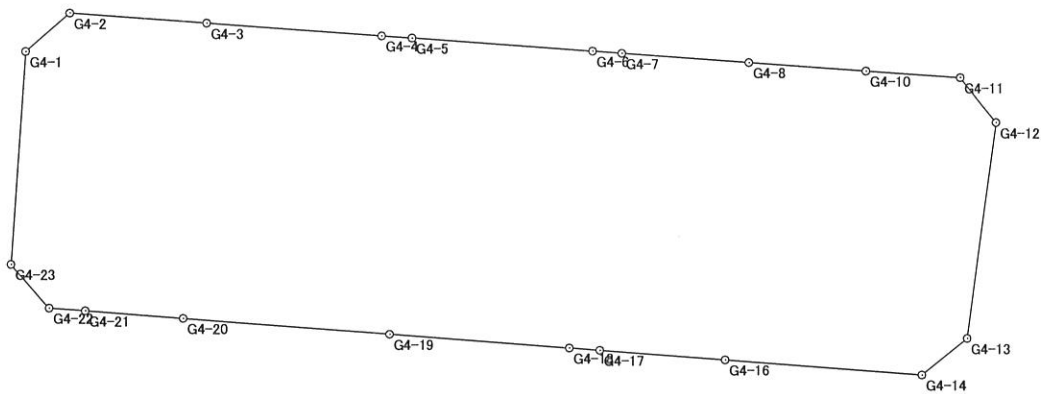
# 距離・方向角の計算書

世界測地系

平成 19 年 3 月 29 日

現場名:出来形確認測量

縮尺係数 0.999938  
辺の総合計 167.293



## 面積集計表

平成 19 年 3 月 30 日

現場名: 出来形確認測量

所有者	No.	地番No	地番名	面積	地積	坪数
	1	5	4BL	1344.3146170	1344.31	406.65

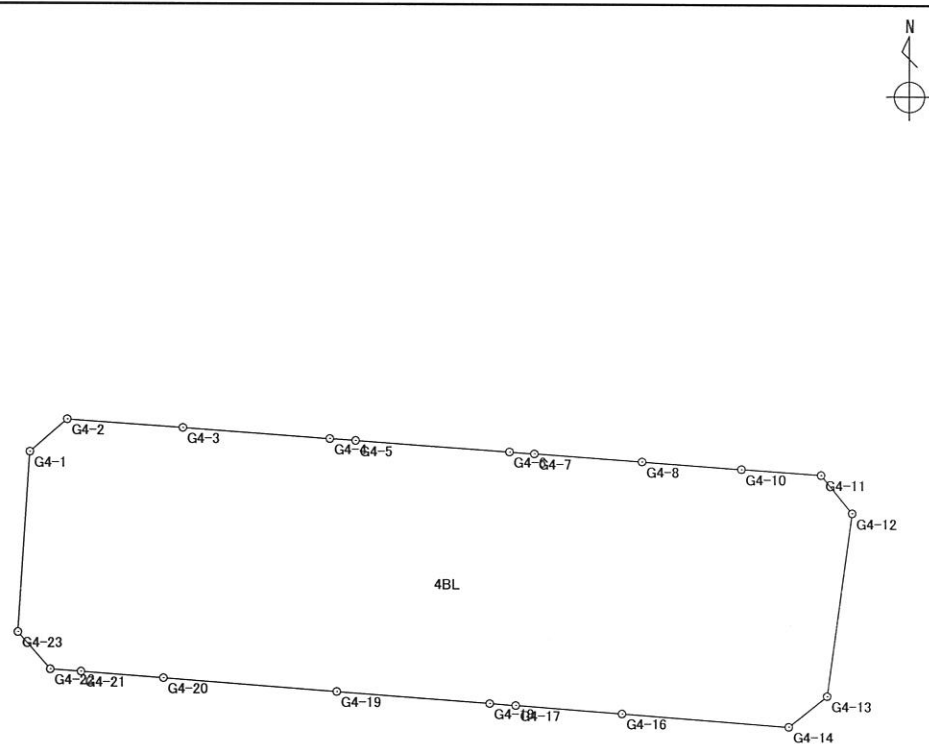
合計			1筆	1344.3146170	1344.31	406.65
----	--	--	----	--------------	---------	--------

# 座 標 面 積 計 算 書

世界測地系

地番	4BL	地目	
----	-----	----	--

境 界 点	X 座 標	Y 座 標	辺 長	方 向 角	備 考
G4-1	-150738.654	-55139.492	4.017	49° 05' 16"	
G4-2	-150736.023	-55136.456	9.441	94° 07' 05"	
G4-3	-150736.701	-55127.039	12.025	94° 11' 31"	
G4-4	-150737.580	-55115.046	2.104	94° 00' 22"	
G4-5	-150737.727	-55112.947	12.528	94° 07' 44"	
G4-6	-150738.629	-55100.452	2.022	94° 15' 19"	
G4-7	-150738.779	-55098.436	8.735	94° 09' 21"	
G4-8	-150739.412	-55089.724	8.070	94° 13' 16"	
G4-10	-150740.006	-55081.676	6.474	94° 00' 45"	
G4-11	-150740.459	-55075.218	3.989	140° 34' 31"	
G4-12	-150743.540	-55072.685	15.010	187° 43' 48"	
G4-13	-150758.414	-55074.704	4.008	230° 53' 37"	
G4-14	-150760.942	-55077.814	13.548	274° 28' 44"	
G4-16	-150759.884	-55091.321	8.628	274° 24' 27"	
G4-17	-150759.221	-55099.923	2.112	274° 23' 55"	
G4-18	-150759.059	-55102.029	12.465	274° 22' 48"	
G4-19	-150758.107	-55114.458	14.181	274° 25' 13"	
G4-20	-150757.014	-55128.597	6.742	274° 24' 54"	
G4-21	-150756.495	-55135.319	2.505	274° 10' 02"	
G4-22	-150756.313	-55137.817	4.012	318° 54' 39"	
G4-23	-150753.289	-55140.454	14.667	3° 45' 39"	



面積算出公式 $A = \frac{1}{2} \sum X_n \times (Y_{n+1} - Y_{n-1})$	面 積	1344.3146170	土地の所在	
	地 積	1344.31	土地の所有者	

# 街区出来形精度管理表

作業名	清音上中島土地区画整理事業	地区	総社市清音上中島地区	計画機関	清音上中島土地区画整理組合	作業機関	株式会社サンワコン	点検者	
路線名	4街区	期間	自至	作業量	3.9ha	主任技術者		その他	

測点	水平位置 (距離)				摘要	測点	水平位置 (距離)				摘要
	計算値	測定値	較差	制限			計算値	測定値	較差	制限	
G4-1 ~ G4-2	4.017	4.013	0.004	0.010	平地 10mm						
G4-2 ~ G4-3	9.441	9.445	-0.004	0.010	"						
G4-3 ~ G4-4	12.025	12.027	-0.002	0.010	"						
G4-4 ~ G4-5	2.104	2.102	0.002	0.010	"						
G4-5 ~ G4-6	12.528	12.528	0.000	0.010	"						
G4-6 ~ G4-7	2.022	2.022	0.000	0.010	"						
G4-7 ~ G4-8	8.735	8.738	-0.003	0.010	"						
G4-8 ~ G4-10	8.070	8.069	0.001	0.010	"						
G4-10 ~ G4-11	6.474	6.475	-0.001	0.010	"						
G4-11 ~ G4-12	3.989	3.988	0.001	0.010	"						
G4-12 ~ G4-13	15.010	15.009	0.001	0.010	"						
G4-13 ~ G4-14	4.008	4.008	0.000	0.010	"						
G4-14 ~ G4-16	13.548	13.544	0.004	0.010	"						
G4-16 ~ G4-17	8.628	8.624	0.004	0.010	"						
G4-17 ~ G4-18	2.112	2.112	0.000	0.010	"						
G4-18 ~ G4-19	12.465	12.468	-0.003	0.010	"						
G4-19 ~ G4-20	14.181	14.186	-0.005	0.010	"						
G4-20 ~ G4-21	6.742	6.743	-0.001	0.010	"						
G4-21 ~ G4-22	2.505	2.505	0.000	0.010	"						
G4-22 ~ G4-23	4.012	4.015	-0.003	0.010	"						
G4-23 ~ G4-1	14.667	14.676	-0.009	0.010	"						