

総社市清音上中島土地区画整理事業 地区界点網図

縮尺 1 : 5 0 0

平成十九年八月作成



A = 39,797.69 m²

作業機関 株式会社サンワコン

計画機関 総社市清音上中島土地区画整理組合

観測手簿

世界測地系

平成 19 年 3 月 29 日

現場名：出来形確認測量

作業名：清音上中島

測点	No. 51	観測日	7年3月28日	天候	晴軟風	観測者	FUJIMOTO
T3	偏心状況	B=C=P		器械高 i		器械高 g	
	測器 No	CE0371		測器	トプコンGTS-310 II	器械定数	0.000
	気温	16.0 °C		気圧	1009.2 hPa	気象補正	2 ppm
	開始時刻	13時56分		終了時刻	14時1分		

水平角	目盛	望遠鏡	方向	視準点名	観測角	結果	倍角	較差
	0	r	1	T2	0° 00' 00"	0° 00' 00"		
			2	K70	355° 26' 00"	355° 26' 00"	90	30
			3	K71	179° 20' 30"	179° 20' 30"	50	10
			4	K72	183° 02' 40"	183° 02' 40"	50	30
		l	4	K72	3° 02' 40"	183° 02' 10"		
			3	K71	359° 20' 50"	179° 20' 20"		
			2	K70	175° 26' 00"	355° 25' 30"		
			1	T2	180° 00' 30"	0° 00' 00"		

結果	視準点名	平均値	倍角差	観測差
	T2	0° 00' 00"		
	K70	355° 25' 45"		
	K71	179° 20' 25"		
	K72	183° 02' 25"		

鉛直角	望遠鏡	視準点名	目標高	観測角	合計	$r - l = 2Z$	$90 \pm \alpha = Z$	α
	r	K70		95° 26' 40"				-5° 26' 40"
	r	K71		96° 11' 30"				-6° 11' 30"
	r	K72		96° 09' 10"				-6° 09' 10"

高度定数差

距離	視準点名	目標高m	距離 1	距離 2	セット内較差 1	セット間較差	反射鏡定数	平均
			距離 3	距離 4	セット内較差 2			
	K70		14.132	14.132	0			14.132
	K71		12.350	12.350	0			12.350
	K72		12.410	12.410	0			12.410

観測記簿

世界測地系

平成 19 年 3 月 29 日

現場名 出来形確認測量

作業名 (清音上中島)

縮尺係数 0.999938

平均ジオイド高

器械点名	視準点名	夾角	斜距離	高度角	平均高度角	平均補正高度角	平均標高	球面距離	平面距離	器械高 g	目標高 m	垂直距離
T3	T2	0° 00' 00"										
T3	K70	355° 25' 45"	14.132	-5° 26' 40"	-5° 26' 40"		-0.671	14.068	14.067			-1.341
T3	K71	179° 20' 25"	12.350	-6° 11' 30"	-6° 11' 30"		-0.666	12.278	12.277			-1.332
T3	K72	183° 02' 25"	12.410	-6° 09' 10"	-6° 09' 10"		-0.665	12.339	12.338			-1.330

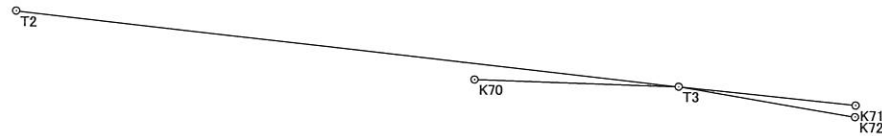
トラバース計算 計算書

世界測地系

平成 19 年 3 月 29 日

現場名：出来形確認測量
 作業名：(清音上中島)
 2次元平面距離開放放射

器械点	視準点	観測角	方向角	距離	cos	sin	ΔX	ΔY	X	Y	点名	点番
T3	T2		276° 34' 52"						-150705.853	-55096.881	T3	84
T3	K70	355° 25' 45"	272° 00' 37"	14.067	0.035078768	-0.999384551	0.493	-14.058	-150705.360	-55110.939	K70	75
T3	K71	179° 20' 25"	95° 55' 17"	12.277	-0.103163859	0.994664375	-1.267	12.211	-150707.120	-55084.670	K71	76
T3	K72	183° 02' 25"	99° 37' 17"	12.338	-0.167136814	0.985933713	-2.062	12.164	-150707.915	-55084.717	K72	77



距離・方向角の計算書

世界測地系

平成 19 年 8 月 10 日

現場名：出来形確認測量

縮尺係数 0.999938
辺の総合計 917.336

No	点番	点名	X 座標	Y 座標	平面距離	球面距離	方向角	夾角																																																																																																																																																																																																																																																																																																						
1	6	K1	-150709.511	-55062.040	18.863	18.864	187° 41' 00"	180° 06' 19"																																																																																																																																																																																																																																																																																																						
	79	K1-1	-150728.205	-55064.562					2	79	K1-1	-150728.205	-55064.562	6.833	6.833	187° 47' 19"	179° 59' 41"	7	K2	-150734.975	-55065.488	3	7	K2	-150734.975	-55065.488	13.158	13.159	187° 47' 00"	179° 52' 06"	80	K2-1	-150748.012	-55067.270	4	80	K2-1	-150748.012	-55067.270	13.226	13.227	187° 39' 06"	218° 12' 27"	8	K3	-150761.120	-55069.031	5	8	K3	-150761.120	-55069.031	0.613	0.613	225° 51' 33"	140° 52' 52"	9	K4	-150761.547	-55069.471	6	9	K4	-150761.547	-55069.471	3.860	3.860	186° 44' 25"	204° 51' 38"	10	K5	-150765.380	-55069.924	7	10	K5	-150765.380	-55069.924	0.555	0.555	211° 36' 03"	112° 30' 57"	11	K6	-150765.853	-55070.215	8	11	K6	-150765.853	-55070.215	0.790	0.790	144° 07' 00"	223° 32' 11"	12	K7	-150766.493	-55069.752	9	12	K7	-150766.493	-55069.752	1.359	1.359	187° 39' 11"	180° 11' 34"	13	K8	-150767.840	-55069.933	10	13	K8	-150767.840	-55069.933	19.991	19.992	187° 50' 45"	179° 50' 24"	14	K9	-150787.644	-55072.662	11	14	K9	-150787.644	-55072.662	12.950	12.951	187° 41' 09"	179° 59' 34"	15	K10	-150800.478	-55074.394	12	15	K10	-150800.478	-55074.394	7.035	7.035	187° 40' 43"	180° 03' 08"	16	K11	-150807.450	-55075.334	13	16	K11	-150807.450	-55075.334	19.997	19.998	187° 43' 51"	179° 59' 00"	17	K12	-150827.265	-55078.024	14	17	K12	-150827.265	-55078.024	12.821	12.822	187° 42' 51"	220° 15' 43"	18	K13	-150839.970	-55079.745	15	18	K13	-150839.970	-55079.745	1.389	1.389	227° 58' 34"	133° 06' 26"	19	K14	-150840.900	-55080.777	16	19	K14	-150840.900	-55080.777	4.020	4.020	181° 05' 00"	209° 44' 24"	20	K15	-150844.919	-55080.853	17	20	K15	-150844.919	-55080.853	0.560	0.560	210° 49' 24"	116° 56' 19"	21	K16	-150845.400	-55081.140	18	21	K16	-150845.400	-55081.140	1.018	1.018	147° 45' 43"	219° 56' 50"	22	K17	-150846.261	-55080.597	19	22	K17	-150846.261	-55080.597	0.827	0.827	187° 42' 33"	179° 59' 03"	23	K18	-150847.081	-55080.708	20	23	K18	-150847.081	-55080.708	20.004	20.005	187° 41' 36"	180° 00' 31"	24	K19	-150866.905	-55083.386	21	24	K19	-150866.905	-55083.386	4.977	4.977	187° 42' 07"	180° 00' 16"	25	K20	-150871.837	-55084.053	22	25	K20	-150871.837	-55084.053	15.027	15.028	187° 42' 23"	180° 00' 27"	26	K21	-150886.728	-55086.068	23	26	K21	-150886.728	-55086.068	19.996	19.997	187° 42' 50"	180° 01' 21"	27	K22	-150906.543	-55088.752	24	27	K22	-150906.543	-55088.752	12.881	12.882	187° 44' 11"
2	79	K1-1	-150728.205	-55064.562	6.833	6.833	187° 47' 19"	179° 59' 41"																																																																																																																																																																																																																																																																																																						
	7	K2	-150734.975	-55065.488					3	7	K2	-150734.975	-55065.488	13.158	13.159	187° 47' 00"	179° 52' 06"	80	K2-1	-150748.012	-55067.270	4	80	K2-1	-150748.012	-55067.270	13.226	13.227	187° 39' 06"	218° 12' 27"	8	K3	-150761.120	-55069.031	5	8	K3	-150761.120	-55069.031	0.613	0.613	225° 51' 33"	140° 52' 52"	9	K4	-150761.547	-55069.471	6	9	K4	-150761.547	-55069.471	3.860	3.860	186° 44' 25"	204° 51' 38"	10	K5	-150765.380	-55069.924	7	10	K5	-150765.380	-55069.924	0.555	0.555	211° 36' 03"	112° 30' 57"	11	K6	-150765.853	-55070.215	8	11	K6	-150765.853	-55070.215	0.790	0.790	144° 07' 00"	223° 32' 11"	12	K7	-150766.493	-55069.752	9	12	K7	-150766.493	-55069.752	1.359	1.359	187° 39' 11"	180° 11' 34"	13	K8	-150767.840	-55069.933	10	13	K8	-150767.840	-55069.933	19.991	19.992	187° 50' 45"	179° 50' 24"	14	K9	-150787.644	-55072.662	11	14	K9	-150787.644	-55072.662	12.950	12.951	187° 41' 09"	179° 59' 34"	15	K10	-150800.478	-55074.394	12	15	K10	-150800.478	-55074.394	7.035	7.035	187° 40' 43"	180° 03' 08"	16	K11	-150807.450	-55075.334	13	16	K11	-150807.450	-55075.334	19.997	19.998	187° 43' 51"	179° 59' 00"	17	K12	-150827.265	-55078.024	14	17	K12	-150827.265	-55078.024	12.821	12.822	187° 42' 51"	220° 15' 43"	18	K13	-150839.970	-55079.745	15	18	K13	-150839.970	-55079.745	1.389	1.389	227° 58' 34"	133° 06' 26"	19	K14	-150840.900	-55080.777	16	19	K14	-150840.900	-55080.777	4.020	4.020	181° 05' 00"	209° 44' 24"	20	K15	-150844.919	-55080.853	17	20	K15	-150844.919	-55080.853	0.560	0.560	210° 49' 24"	116° 56' 19"	21	K16	-150845.400	-55081.140	18	21	K16	-150845.400	-55081.140	1.018	1.018	147° 45' 43"	219° 56' 50"	22	K17	-150846.261	-55080.597	19	22	K17	-150846.261	-55080.597	0.827	0.827	187° 42' 33"	179° 59' 03"	23	K18	-150847.081	-55080.708	20	23	K18	-150847.081	-55080.708	20.004	20.005	187° 41' 36"	180° 00' 31"	24	K19	-150866.905	-55083.386	21	24	K19	-150866.905	-55083.386	4.977	4.977	187° 42' 07"	180° 00' 16"	25	K20	-150871.837	-55084.053	22	25	K20	-150871.837	-55084.053	15.027	15.028	187° 42' 23"	180° 00' 27"	26	K21	-150886.728	-55086.068	23	26	K21	-150886.728	-55086.068	19.996	19.997	187° 42' 50"	180° 01' 21"	27	K22	-150906.543	-55088.752	24	27	K22	-150906.543	-55088.752	12.881	12.882	187° 44' 11"	220° 46' 05"	28	K23	-150919.307	-55090.486								
3	7	K2	-150734.975	-55065.488	13.158	13.159	187° 47' 00"	179° 52' 06"																																																																																																																																																																																																																																																																																																						
	80	K2-1	-150748.012	-55067.270					4	80	K2-1	-150748.012	-55067.270	13.226	13.227	187° 39' 06"	218° 12' 27"	8	K3	-150761.120	-55069.031	5	8	K3	-150761.120	-55069.031	0.613	0.613	225° 51' 33"	140° 52' 52"	9	K4	-150761.547	-55069.471	6	9	K4	-150761.547	-55069.471	3.860	3.860	186° 44' 25"	204° 51' 38"	10	K5	-150765.380	-55069.924	7	10	K5	-150765.380	-55069.924	0.555	0.555	211° 36' 03"	112° 30' 57"	11	K6	-150765.853	-55070.215	8	11	K6	-150765.853	-55070.215	0.790	0.790	144° 07' 00"	223° 32' 11"	12	K7	-150766.493	-55069.752	9	12	K7	-150766.493	-55069.752	1.359	1.359	187° 39' 11"	180° 11' 34"	13	K8	-150767.840	-55069.933	10	13	K8	-150767.840	-55069.933	19.991	19.992	187° 50' 45"	179° 50' 24"	14	K9	-150787.644	-55072.662	11	14	K9	-150787.644	-55072.662	12.950	12.951	187° 41' 09"	179° 59' 34"	15	K10	-150800.478	-55074.394	12	15	K10	-150800.478	-55074.394	7.035	7.035	187° 40' 43"	180° 03' 08"	16	K11	-150807.450	-55075.334	13	16	K11	-150807.450	-55075.334	19.997	19.998	187° 43' 51"	179° 59' 00"	17	K12	-150827.265	-55078.024	14	17	K12	-150827.265	-55078.024	12.821	12.822	187° 42' 51"	220° 15' 43"	18	K13	-150839.970	-55079.745	15	18	K13	-150839.970	-55079.745	1.389	1.389	227° 58' 34"	133° 06' 26"	19	K14	-150840.900	-55080.777	16	19	K14	-150840.900	-55080.777	4.020	4.020	181° 05' 00"	209° 44' 24"	20	K15	-150844.919	-55080.853	17	20	K15	-150844.919	-55080.853	0.560	0.560	210° 49' 24"	116° 56' 19"	21	K16	-150845.400	-55081.140	18	21	K16	-150845.400	-55081.140	1.018	1.018	147° 45' 43"	219° 56' 50"	22	K17	-150846.261	-55080.597	19	22	K17	-150846.261	-55080.597	0.827	0.827	187° 42' 33"	179° 59' 03"	23	K18	-150847.081	-55080.708	20	23	K18	-150847.081	-55080.708	20.004	20.005	187° 41' 36"	180° 00' 31"	24	K19	-150866.905	-55083.386	21	24	K19	-150866.905	-55083.386	4.977	4.977	187° 42' 07"	180° 00' 16"	25	K20	-150871.837	-55084.053	22	25	K20	-150871.837	-55084.053	15.027	15.028	187° 42' 23"	180° 00' 27"	26	K21	-150886.728	-55086.068	23	26	K21	-150886.728	-55086.068	19.996	19.997	187° 42' 50"	180° 01' 21"	27	K22	-150906.543	-55088.752	24	27	K22	-150906.543	-55088.752	12.881	12.882	187° 44' 11"	220° 46' 05"	28	K23	-150919.307	-55090.486																					
4	80	K2-1	-150748.012	-55067.270	13.226	13.227	187° 39' 06"	218° 12' 27"																																																																																																																																																																																																																																																																																																						
	8	K3	-150761.120	-55069.031					5	8	K3	-150761.120	-55069.031	0.613	0.613	225° 51' 33"	140° 52' 52"	9	K4	-150761.547	-55069.471	6	9	K4	-150761.547	-55069.471	3.860	3.860	186° 44' 25"	204° 51' 38"	10	K5	-150765.380	-55069.924	7	10	K5	-150765.380	-55069.924	0.555	0.555	211° 36' 03"	112° 30' 57"	11	K6	-150765.853	-55070.215	8	11	K6	-150765.853	-55070.215	0.790	0.790	144° 07' 00"	223° 32' 11"	12	K7	-150766.493	-55069.752	9	12	K7	-150766.493	-55069.752	1.359	1.359	187° 39' 11"	180° 11' 34"	13	K8	-150767.840	-55069.933	10	13	K8	-150767.840	-55069.933	19.991	19.992	187° 50' 45"	179° 50' 24"	14	K9	-150787.644	-55072.662	11	14	K9	-150787.644	-55072.662	12.950	12.951	187° 41' 09"	179° 59' 34"	15	K10	-150800.478	-55074.394	12	15	K10	-150800.478	-55074.394	7.035	7.035	187° 40' 43"	180° 03' 08"	16	K11	-150807.450	-55075.334	13	16	K11	-150807.450	-55075.334	19.997	19.998	187° 43' 51"	179° 59' 00"	17	K12	-150827.265	-55078.024	14	17	K12	-150827.265	-55078.024	12.821	12.822	187° 42' 51"	220° 15' 43"	18	K13	-150839.970	-55079.745	15	18	K13	-150839.970	-55079.745	1.389	1.389	227° 58' 34"	133° 06' 26"	19	K14	-150840.900	-55080.777	16	19	K14	-150840.900	-55080.777	4.020	4.020	181° 05' 00"	209° 44' 24"	20	K15	-150844.919	-55080.853	17	20	K15	-150844.919	-55080.853	0.560	0.560	210° 49' 24"	116° 56' 19"	21	K16	-150845.400	-55081.140	18	21	K16	-150845.400	-55081.140	1.018	1.018	147° 45' 43"	219° 56' 50"	22	K17	-150846.261	-55080.597	19	22	K17	-150846.261	-55080.597	0.827	0.827	187° 42' 33"	179° 59' 03"	23	K18	-150847.081	-55080.708	20	23	K18	-150847.081	-55080.708	20.004	20.005	187° 41' 36"	180° 00' 31"	24	K19	-150866.905	-55083.386	21	24	K19	-150866.905	-55083.386	4.977	4.977	187° 42' 07"	180° 00' 16"	25	K20	-150871.837	-55084.053	22	25	K20	-150871.837	-55084.053	15.027	15.028	187° 42' 23"	180° 00' 27"	26	K21	-150886.728	-55086.068	23	26	K21	-150886.728	-55086.068	19.996	19.997	187° 42' 50"	180° 01' 21"	27	K22	-150906.543	-55088.752	24	27	K22	-150906.543	-55088.752	12.881	12.882	187° 44' 11"	220° 46' 05"	28	K23	-150919.307	-55090.486																																		
5	8	K3	-150761.120	-55069.031	0.613	0.613	225° 51' 33"	140° 52' 52"																																																																																																																																																																																																																																																																																																						
	9	K4	-150761.547	-55069.471					6	9	K4	-150761.547	-55069.471	3.860	3.860	186° 44' 25"	204° 51' 38"	10	K5	-150765.380	-55069.924	7	10	K5	-150765.380	-55069.924	0.555	0.555	211° 36' 03"	112° 30' 57"	11	K6	-150765.853	-55070.215	8	11	K6	-150765.853	-55070.215	0.790	0.790	144° 07' 00"	223° 32' 11"	12	K7	-150766.493	-55069.752	9	12	K7	-150766.493	-55069.752	1.359	1.359	187° 39' 11"	180° 11' 34"	13	K8	-150767.840	-55069.933	10	13	K8	-150767.840	-55069.933	19.991	19.992	187° 50' 45"	179° 50' 24"	14	K9	-150787.644	-55072.662	11	14	K9	-150787.644	-55072.662	12.950	12.951	187° 41' 09"	179° 59' 34"	15	K10	-150800.478	-55074.394	12	15	K10	-150800.478	-55074.394	7.035	7.035	187° 40' 43"	180° 03' 08"	16	K11	-150807.450	-55075.334	13	16	K11	-150807.450	-55075.334	19.997	19.998	187° 43' 51"	179° 59' 00"	17	K12	-150827.265	-55078.024	14	17	K12	-150827.265	-55078.024	12.821	12.822	187° 42' 51"	220° 15' 43"	18	K13	-150839.970	-55079.745	15	18	K13	-150839.970	-55079.745	1.389	1.389	227° 58' 34"	133° 06' 26"	19	K14	-150840.900	-55080.777	16	19	K14	-150840.900	-55080.777	4.020	4.020	181° 05' 00"	209° 44' 24"	20	K15	-150844.919	-55080.853	17	20	K15	-150844.919	-55080.853	0.560	0.560	210° 49' 24"	116° 56' 19"	21	K16	-150845.400	-55081.140	18	21	K16	-150845.400	-55081.140	1.018	1.018	147° 45' 43"	219° 56' 50"	22	K17	-150846.261	-55080.597	19	22	K17	-150846.261	-55080.597	0.827	0.827	187° 42' 33"	179° 59' 03"	23	K18	-150847.081	-55080.708	20	23	K18	-150847.081	-55080.708	20.004	20.005	187° 41' 36"	180° 00' 31"	24	K19	-150866.905	-55083.386	21	24	K19	-150866.905	-55083.386	4.977	4.977	187° 42' 07"	180° 00' 16"	25	K20	-150871.837	-55084.053	22	25	K20	-150871.837	-55084.053	15.027	15.028	187° 42' 23"	180° 00' 27"	26	K21	-150886.728	-55086.068	23	26	K21	-150886.728	-55086.068	19.996	19.997	187° 42' 50"	180° 01' 21"	27	K22	-150906.543	-55088.752	24	27	K22	-150906.543	-55088.752	12.881	12.882	187° 44' 11"	220° 46' 05"	28	K23	-150919.307	-55090.486																																															
6	9	K4	-150761.547	-55069.471	3.860	3.860	186° 44' 25"	204° 51' 38"																																																																																																																																																																																																																																																																																																						
	10	K5	-150765.380	-55069.924					7	10	K5	-150765.380	-55069.924	0.555	0.555	211° 36' 03"	112° 30' 57"	11	K6	-150765.853	-55070.215	8	11	K6	-150765.853	-55070.215	0.790	0.790	144° 07' 00"	223° 32' 11"	12	K7	-150766.493	-55069.752	9	12	K7	-150766.493	-55069.752	1.359	1.359	187° 39' 11"	180° 11' 34"	13	K8	-150767.840	-55069.933	10	13	K8	-150767.840	-55069.933	19.991	19.992	187° 50' 45"	179° 50' 24"	14	K9	-150787.644	-55072.662	11	14	K9	-150787.644	-55072.662	12.950	12.951	187° 41' 09"	179° 59' 34"	15	K10	-150800.478	-55074.394	12	15	K10	-150800.478	-55074.394	7.035	7.035	187° 40' 43"	180° 03' 08"	16	K11	-150807.450	-55075.334	13	16	K11	-150807.450	-55075.334	19.997	19.998	187° 43' 51"	179° 59' 00"	17	K12	-150827.265	-55078.024	14	17	K12	-150827.265	-55078.024	12.821	12.822	187° 42' 51"	220° 15' 43"	18	K13	-150839.970	-55079.745	15	18	K13	-150839.970	-55079.745	1.389	1.389	227° 58' 34"	133° 06' 26"	19	K14	-150840.900	-55080.777	16	19	K14	-150840.900	-55080.777	4.020	4.020	181° 05' 00"	209° 44' 24"	20	K15	-150844.919	-55080.853	17	20	K15	-150844.919	-55080.853	0.560	0.560	210° 49' 24"	116° 56' 19"	21	K16	-150845.400	-55081.140	18	21	K16	-150845.400	-55081.140	1.018	1.018	147° 45' 43"	219° 56' 50"	22	K17	-150846.261	-55080.597	19	22	K17	-150846.261	-55080.597	0.827	0.827	187° 42' 33"	179° 59' 03"	23	K18	-150847.081	-55080.708	20	23	K18	-150847.081	-55080.708	20.004	20.005	187° 41' 36"	180° 00' 31"	24	K19	-150866.905	-55083.386	21	24	K19	-150866.905	-55083.386	4.977	4.977	187° 42' 07"	180° 00' 16"	25	K20	-150871.837	-55084.053	22	25	K20	-150871.837	-55084.053	15.027	15.028	187° 42' 23"	180° 00' 27"	26	K21	-150886.728	-55086.068	23	26	K21	-150886.728	-55086.068	19.996	19.997	187° 42' 50"	180° 01' 21"	27	K22	-150906.543	-55088.752	24	27	K22	-150906.543	-55088.752	12.881	12.882	187° 44' 11"	220° 46' 05"	28	K23	-150919.307	-55090.486																																																												
7	10	K5	-150765.380	-55069.924	0.555	0.555	211° 36' 03"	112° 30' 57"																																																																																																																																																																																																																																																																																																						
	11	K6	-150765.853	-55070.215					8	11	K6	-150765.853	-55070.215	0.790	0.790	144° 07' 00"	223° 32' 11"	12	K7	-150766.493	-55069.752	9	12	K7	-150766.493	-55069.752	1.359	1.359	187° 39' 11"	180° 11' 34"	13	K8	-150767.840	-55069.933	10	13	K8	-150767.840	-55069.933	19.991	19.992	187° 50' 45"	179° 50' 24"	14	K9	-150787.644	-55072.662	11	14	K9	-150787.644	-55072.662	12.950	12.951	187° 41' 09"	179° 59' 34"	15	K10	-150800.478	-55074.394	12	15	K10	-150800.478	-55074.394	7.035	7.035	187° 40' 43"	180° 03' 08"	16	K11	-150807.450	-55075.334	13	16	K11	-150807.450	-55075.334	19.997	19.998	187° 43' 51"	179° 59' 00"	17	K12	-150827.265	-55078.024	14	17	K12	-150827.265	-55078.024	12.821	12.822	187° 42' 51"	220° 15' 43"	18	K13	-150839.970	-55079.745	15	18	K13	-150839.970	-55079.745	1.389	1.389	227° 58' 34"	133° 06' 26"	19	K14	-150840.900	-55080.777	16	19	K14	-150840.900	-55080.777	4.020	4.020	181° 05' 00"	209° 44' 24"	20	K15	-150844.919	-55080.853	17	20	K15	-150844.919	-55080.853	0.560	0.560	210° 49' 24"	116° 56' 19"	21	K16	-150845.400	-55081.140	18	21	K16	-150845.400	-55081.140	1.018	1.018	147° 45' 43"	219° 56' 50"	22	K17	-150846.261	-55080.597	19	22	K17	-150846.261	-55080.597	0.827	0.827	187° 42' 33"	179° 59' 03"	23	K18	-150847.081	-55080.708	20	23	K18	-150847.081	-55080.708	20.004	20.005	187° 41' 36"	180° 00' 31"	24	K19	-150866.905	-55083.386	21	24	K19	-150866.905	-55083.386	4.977	4.977	187° 42' 07"	180° 00' 16"	25	K20	-150871.837	-55084.053	22	25	K20	-150871.837	-55084.053	15.027	15.028	187° 42' 23"	180° 00' 27"	26	K21	-150886.728	-55086.068	23	26	K21	-150886.728	-55086.068	19.996	19.997	187° 42' 50"	180° 01' 21"	27	K22	-150906.543	-55088.752	24	27	K22	-150906.543	-55088.752	12.881	12.882	187° 44' 11"	220° 46' 05"	28	K23	-150919.307	-55090.486																																																																									
8	11	K6	-150765.853	-55070.215	0.790	0.790	144° 07' 00"	223° 32' 11"																																																																																																																																																																																																																																																																																																						
	12	K7	-150766.493	-55069.752					9	12	K7	-150766.493	-55069.752	1.359	1.359	187° 39' 11"	180° 11' 34"	13	K8	-150767.840	-55069.933	10	13	K8	-150767.840	-55069.933	19.991	19.992	187° 50' 45"	179° 50' 24"	14	K9	-150787.644	-55072.662	11	14	K9	-150787.644	-55072.662	12.950	12.951	187° 41' 09"	179° 59' 34"	15	K10	-150800.478	-55074.394	12	15	K10	-150800.478	-55074.394	7.035	7.035	187° 40' 43"	180° 03' 08"	16	K11	-150807.450	-55075.334	13	16	K11	-150807.450	-55075.334	19.997	19.998	187° 43' 51"	179° 59' 00"	17	K12	-150827.265	-55078.024	14	17	K12	-150827.265	-55078.024	12.821	12.822	187° 42' 51"	220° 15' 43"	18	K13	-150839.970	-55079.745	15	18	K13	-150839.970	-55079.745	1.389	1.389	227° 58' 34"	133° 06' 26"	19	K14	-150840.900	-55080.777	16	19	K14	-150840.900	-55080.777	4.020	4.020	181° 05' 00"	209° 44' 24"	20	K15	-150844.919	-55080.853	17	20	K15	-150844.919	-55080.853	0.560	0.560	210° 49' 24"	116° 56' 19"	21	K16	-150845.400	-55081.140	18	21	K16	-150845.400	-55081.140	1.018	1.018	147° 45' 43"	219° 56' 50"	22	K17	-150846.261	-55080.597	19	22	K17	-150846.261	-55080.597	0.827	0.827	187° 42' 33"	179° 59' 03"	23	K18	-150847.081	-55080.708	20	23	K18	-150847.081	-55080.708	20.004	20.005	187° 41' 36"	180° 00' 31"	24	K19	-150866.905	-55083.386	21	24	K19	-150866.905	-55083.386	4.977	4.977	187° 42' 07"	180° 00' 16"	25	K20	-150871.837	-55084.053	22	25	K20	-150871.837	-55084.053	15.027	15.028	187° 42' 23"	180° 00' 27"	26	K21	-150886.728	-55086.068	23	26	K21	-150886.728	-55086.068	19.996	19.997	187° 42' 50"	180° 01' 21"	27	K22	-150906.543	-55088.752	24	27	K22	-150906.543	-55088.752	12.881	12.882	187° 44' 11"	220° 46' 05"	28	K23	-150919.307	-55090.486																																																																																						
9	12	K7	-150766.493	-55069.752	1.359	1.359	187° 39' 11"	180° 11' 34"																																																																																																																																																																																																																																																																																																						
	13	K8	-150767.840	-55069.933					10	13	K8	-150767.840	-55069.933	19.991	19.992	187° 50' 45"	179° 50' 24"	14	K9	-150787.644	-55072.662	11	14	K9	-150787.644	-55072.662	12.950	12.951	187° 41' 09"	179° 59' 34"	15	K10	-150800.478	-55074.394	12	15	K10	-150800.478	-55074.394	7.035	7.035	187° 40' 43"	180° 03' 08"	16	K11	-150807.450	-55075.334	13	16	K11	-150807.450	-55075.334	19.997	19.998	187° 43' 51"	179° 59' 00"	17	K12	-150827.265	-55078.024	14	17	K12	-150827.265	-55078.024	12.821	12.822	187° 42' 51"	220° 15' 43"	18	K13	-150839.970	-55079.745	15	18	K13	-150839.970	-55079.745	1.389	1.389	227° 58' 34"	133° 06' 26"	19	K14	-150840.900	-55080.777	16	19	K14	-150840.900	-55080.777	4.020	4.020	181° 05' 00"	209° 44' 24"	20	K15	-150844.919	-55080.853	17	20	K15	-150844.919	-55080.853	0.560	0.560	210° 49' 24"	116° 56' 19"	21	K16	-150845.400	-55081.140	18	21	K16	-150845.400	-55081.140	1.018	1.018	147° 45' 43"	219° 56' 50"	22	K17	-150846.261	-55080.597	19	22	K17	-150846.261	-55080.597	0.827	0.827	187° 42' 33"	179° 59' 03"	23	K18	-150847.081	-55080.708	20	23	K18	-150847.081	-55080.708	20.004	20.005	187° 41' 36"	180° 00' 31"	24	K19	-150866.905	-55083.386	21	24	K19	-150866.905	-55083.386	4.977	4.977	187° 42' 07"	180° 00' 16"	25	K20	-150871.837	-55084.053	22	25	K20	-150871.837	-55084.053	15.027	15.028	187° 42' 23"	180° 00' 27"	26	K21	-150886.728	-55086.068	23	26	K21	-150886.728	-55086.068	19.996	19.997	187° 42' 50"	180° 01' 21"	27	K22	-150906.543	-55088.752	24	27	K22	-150906.543	-55088.752	12.881	12.882	187° 44' 11"	220° 46' 05"	28	K23	-150919.307	-55090.486																																																																																																			
10	13	K8	-150767.840	-55069.933	19.991	19.992	187° 50' 45"	179° 50' 24"																																																																																																																																																																																																																																																																																																						
	14	K9	-150787.644	-55072.662					11	14	K9	-150787.644	-55072.662	12.950	12.951	187° 41' 09"	179° 59' 34"	15	K10	-150800.478	-55074.394	12	15	K10	-150800.478	-55074.394	7.035	7.035	187° 40' 43"	180° 03' 08"	16	K11	-150807.450	-55075.334	13	16	K11	-150807.450	-55075.334	19.997	19.998	187° 43' 51"	179° 59' 00"	17	K12	-150827.265	-55078.024	14	17	K12	-150827.265	-55078.024	12.821	12.822	187° 42' 51"	220° 15' 43"	18	K13	-150839.970	-55079.745	15	18	K13	-150839.970	-55079.745	1.389	1.389	227° 58' 34"	133° 06' 26"	19	K14	-150840.900	-55080.777	16	19	K14	-150840.900	-55080.777	4.020	4.020	181° 05' 00"	209° 44' 24"	20	K15	-150844.919	-55080.853	17	20	K15	-150844.919	-55080.853	0.560	0.560	210° 49' 24"	116° 56' 19"	21	K16	-150845.400	-55081.140	18	21	K16	-150845.400	-55081.140	1.018	1.018	147° 45' 43"	219° 56' 50"	22	K17	-150846.261	-55080.597	19	22	K17	-150846.261	-55080.597	0.827	0.827	187° 42' 33"	179° 59' 03"	23	K18	-150847.081	-55080.708	20	23	K18	-150847.081	-55080.708	20.004	20.005	187° 41' 36"	180° 00' 31"	24	K19	-150866.905	-55083.386	21	24	K19	-150866.905	-55083.386	4.977	4.977	187° 42' 07"	180° 00' 16"	25	K20	-150871.837	-55084.053	22	25	K20	-150871.837	-55084.053	15.027	15.028	187° 42' 23"	180° 00' 27"	26	K21	-150886.728	-55086.068	23	26	K21	-150886.728	-55086.068	19.996	19.997	187° 42' 50"	180° 01' 21"	27	K22	-150906.543	-55088.752	24	27	K22	-150906.543	-55088.752	12.881	12.882	187° 44' 11"	220° 46' 05"	28	K23	-150919.307	-55090.486																																																																																																																
11	14	K9	-150787.644	-55072.662	12.950	12.951	187° 41' 09"	179° 59' 34"																																																																																																																																																																																																																																																																																																						
	15	K10	-150800.478	-55074.394					12	15	K10	-150800.478	-55074.394	7.035	7.035	187° 40' 43"	180° 03' 08"	16	K11	-150807.450	-55075.334	13	16	K11	-150807.450	-55075.334	19.997	19.998	187° 43' 51"	179° 59' 00"	17	K12	-150827.265	-55078.024	14	17	K12	-150827.265	-55078.024	12.821	12.822	187° 42' 51"	220° 15' 43"	18	K13	-150839.970	-55079.745	15	18	K13	-150839.970	-55079.745	1.389	1.389	227° 58' 34"	133° 06' 26"	19	K14	-150840.900	-55080.777	16	19	K14	-150840.900	-55080.777	4.020	4.020	181° 05' 00"	209° 44' 24"	20	K15	-150844.919	-55080.853	17	20	K15	-150844.919	-55080.853	0.560	0.560	210° 49' 24"	116° 56' 19"	21	K16	-150845.400	-55081.140	18	21	K16	-150845.400	-55081.140	1.018	1.018	147° 45' 43"	219° 56' 50"	22	K17	-150846.261	-55080.597	19	22	K17	-150846.261	-55080.597	0.827	0.827	187° 42' 33"	179° 59' 03"	23	K18	-150847.081	-55080.708	20	23	K18	-150847.081	-55080.708	20.004	20.005	187° 41' 36"	180° 00' 31"	24	K19	-150866.905	-55083.386	21	24	K19	-150866.905	-55083.386	4.977	4.977	187° 42' 07"	180° 00' 16"	25	K20	-150871.837	-55084.053	22	25	K20	-150871.837	-55084.053	15.027	15.028	187° 42' 23"	180° 00' 27"	26	K21	-150886.728	-55086.068	23	26	K21	-150886.728	-55086.068	19.996	19.997	187° 42' 50"	180° 01' 21"	27	K22	-150906.543	-55088.752	24	27	K22	-150906.543	-55088.752	12.881	12.882	187° 44' 11"	220° 46' 05"	28	K23	-150919.307	-55090.486																																																																																																																													
12	15	K10	-150800.478	-55074.394	7.035	7.035	187° 40' 43"	180° 03' 08"																																																																																																																																																																																																																																																																																																						
	16	K11	-150807.450	-55075.334					13	16	K11	-150807.450	-55075.334	19.997	19.998	187° 43' 51"	179° 59' 00"	17	K12	-150827.265	-55078.024	14	17	K12	-150827.265	-55078.024	12.821	12.822	187° 42' 51"	220° 15' 43"	18	K13	-150839.970	-55079.745	15	18	K13	-150839.970	-55079.745	1.389	1.389	227° 58' 34"	133° 06' 26"	19	K14	-150840.900	-55080.777	16	19	K14	-150840.900	-55080.777	4.020	4.020	181° 05' 00"	209° 44' 24"	20	K15	-150844.919	-55080.853	17	20	K15	-150844.919	-55080.853	0.560	0.560	210° 49' 24"	116° 56' 19"	21	K16	-150845.400	-55081.140	18	21	K16	-150845.400	-55081.140	1.018	1.018	147° 45' 43"	219° 56' 50"	22	K17	-150846.261	-55080.597	19	22	K17	-150846.261	-55080.597	0.827	0.827	187° 42' 33"	179° 59' 03"	23	K18	-150847.081	-55080.708	20	23	K18	-150847.081	-55080.708	20.004	20.005	187° 41' 36"	180° 00' 31"	24	K19	-150866.905	-55083.386	21	24	K19	-150866.905	-55083.386	4.977	4.977	187° 42' 07"	180° 00' 16"	25	K20	-150871.837	-55084.053	22	25	K20	-150871.837	-55084.053	15.027	15.028	187° 42' 23"	180° 00' 27"	26	K21	-150886.728	-55086.068	23	26	K21	-150886.728	-55086.068	19.996	19.997	187° 42' 50"	180° 01' 21"	27	K22	-150906.543	-55088.752	24	27	K22	-150906.543	-55088.752	12.881	12.882	187° 44' 11"	220° 46' 05"	28	K23	-150919.307	-55090.486																																																																																																																																										
13	16	K11	-150807.450	-55075.334	19.997	19.998	187° 43' 51"	179° 59' 00"																																																																																																																																																																																																																																																																																																						
	17	K12	-150827.265	-55078.024					14	17	K12	-150827.265	-55078.024	12.821	12.822	187° 42' 51"	220° 15' 43"	18	K13	-150839.970	-55079.745	15	18	K13	-150839.970	-55079.745	1.389	1.389	227° 58' 34"	133° 06' 26"	19	K14	-150840.900	-55080.777	16	19	K14	-150840.900	-55080.777	4.020	4.020	181° 05' 00"	209° 44' 24"	20	K15	-150844.919	-55080.853	17	20	K15	-150844.919	-55080.853	0.560	0.560	210° 49' 24"	116° 56' 19"	21	K16	-150845.400	-55081.140	18	21	K16	-150845.400	-55081.140	1.018	1.018	147° 45' 43"	219° 56' 50"	22	K17	-150846.261	-55080.597	19	22	K17	-150846.261	-55080.597	0.827	0.827	187° 42' 33"	179° 59' 03"	23	K18	-150847.081	-55080.708	20	23	K18	-150847.081	-55080.708	20.004	20.005	187° 41' 36"	180° 00' 31"	24	K19	-150866.905	-55083.386	21	24	K19	-150866.905	-55083.386	4.977	4.977	187° 42' 07"	180° 00' 16"	25	K20	-150871.837	-55084.053	22	25	K20	-150871.837	-55084.053	15.027	15.028	187° 42' 23"	180° 00' 27"	26	K21	-150886.728	-55086.068	23	26	K21	-150886.728	-55086.068	19.996	19.997	187° 42' 50"	180° 01' 21"	27	K22	-150906.543	-55088.752	24	27	K22	-150906.543	-55088.752	12.881	12.882	187° 44' 11"	220° 46' 05"	28	K23	-150919.307	-55090.486																																																																																																																																																							
14	17	K12	-150827.265	-55078.024	12.821	12.822	187° 42' 51"	220° 15' 43"																																																																																																																																																																																																																																																																																																						
	18	K13	-150839.970	-55079.745					15	18	K13	-150839.970	-55079.745	1.389	1.389	227° 58' 34"	133° 06' 26"	19	K14	-150840.900	-55080.777	16	19	K14	-150840.900	-55080.777	4.020	4.020	181° 05' 00"	209° 44' 24"	20	K15	-150844.919	-55080.853	17	20	K15	-150844.919	-55080.853	0.560	0.560	210° 49' 24"	116° 56' 19"	21	K16	-150845.400	-55081.140	18	21	K16	-150845.400	-55081.140	1.018	1.018	147° 45' 43"	219° 56' 50"	22	K17	-150846.261	-55080.597	19	22	K17	-150846.261	-55080.597	0.827	0.827	187° 42' 33"	179° 59' 03"	23	K18	-150847.081	-55080.708	20	23	K18	-150847.081	-55080.708	20.004	20.005	187° 41' 36"	180° 00' 31"	24	K19	-150866.905	-55083.386	21	24	K19	-150866.905	-55083.386	4.977	4.977	187° 42' 07"	180° 00' 16"	25	K20	-150871.837	-55084.053	22	25	K20	-150871.837	-55084.053	15.027	15.028	187° 42' 23"	180° 00' 27"	26	K21	-150886.728	-55086.068	23	26	K21	-150886.728	-55086.068	19.996	19.997	187° 42' 50"	180° 01' 21"	27	K22	-150906.543	-55088.752	24	27	K22	-150906.543	-55088.752	12.881	12.882	187° 44' 11"	220° 46' 05"	28	K23	-150919.307	-55090.486																																																																																																																																																																				
15	18	K13	-150839.970	-55079.745	1.389	1.389	227° 58' 34"	133° 06' 26"																																																																																																																																																																																																																																																																																																						
	19	K14	-150840.900	-55080.777					16	19	K14	-150840.900	-55080.777	4.020	4.020	181° 05' 00"	209° 44' 24"	20	K15	-150844.919	-55080.853	17	20	K15	-150844.919	-55080.853	0.560	0.560	210° 49' 24"	116° 56' 19"	21	K16	-150845.400	-55081.140	18	21	K16	-150845.400	-55081.140	1.018	1.018	147° 45' 43"	219° 56' 50"	22	K17	-150846.261	-55080.597	19	22	K17	-150846.261	-55080.597	0.827	0.827	187° 42' 33"	179° 59' 03"	23	K18	-150847.081	-55080.708	20	23	K18	-150847.081	-55080.708	20.004	20.005	187° 41' 36"	180° 00' 31"	24	K19	-150866.905	-55083.386	21	24	K19	-150866.905	-55083.386	4.977	4.977	187° 42' 07"	180° 00' 16"	25	K20	-150871.837	-55084.053	22	25	K20	-150871.837	-55084.053	15.027	15.028	187° 42' 23"	180° 00' 27"	26	K21	-150886.728	-55086.068	23	26	K21	-150886.728	-55086.068	19.996	19.997	187° 42' 50"	180° 01' 21"	27	K22	-150906.543	-55088.752	24	27	K22	-150906.543	-55088.752	12.881	12.882	187° 44' 11"	220° 46' 05"	28	K23	-150919.307	-55090.486																																																																																																																																																																																	
16	19	K14	-150840.900	-55080.777	4.020	4.020	181° 05' 00"	209° 44' 24"																																																																																																																																																																																																																																																																																																						
	20	K15	-150844.919	-55080.853					17	20	K15	-150844.919	-55080.853	0.560	0.560	210° 49' 24"	116° 56' 19"	21	K16	-150845.400	-55081.140	18	21	K16	-150845.400	-55081.140	1.018	1.018	147° 45' 43"	219° 56' 50"	22	K17	-150846.261	-55080.597	19	22	K17	-150846.261	-55080.597	0.827	0.827	187° 42' 33"	179° 59' 03"	23	K18	-150847.081	-55080.708	20	23	K18	-150847.081	-55080.708	20.004	20.005	187° 41' 36"	180° 00' 31"	24	K19	-150866.905	-55083.386	21	24	K19	-150866.905	-55083.386	4.977	4.977	187° 42' 07"	180° 00' 16"	25	K20	-150871.837	-55084.053	22	25	K20	-150871.837	-55084.053	15.027	15.028	187° 42' 23"	180° 00' 27"	26	K21	-150886.728	-55086.068	23	26	K21	-150886.728	-55086.068	19.996	19.997	187° 42' 50"	180° 01' 21"	27	K22	-150906.543	-55088.752	24	27	K22	-150906.543	-55088.752	12.881	12.882	187° 44' 11"	220° 46' 05"	28	K23	-150919.307	-55090.486																																																																																																																																																																																														
17	20	K15	-150844.919	-55080.853	0.560	0.560	210° 49' 24"	116° 56' 19"																																																																																																																																																																																																																																																																																																						
	21	K16	-150845.400	-55081.140					18	21	K16	-150845.400	-55081.140	1.018	1.018	147° 45' 43"	219° 56' 50"	22	K17	-150846.261	-55080.597	19	22	K17	-150846.261	-55080.597	0.827	0.827	187° 42' 33"	179° 59' 03"	23	K18	-150847.081	-55080.708	20	23	K18	-150847.081	-55080.708	20.004	20.005	187° 41' 36"	180° 00' 31"	24	K19	-150866.905	-55083.386	21	24	K19	-150866.905	-55083.386	4.977	4.977	187° 42' 07"	180° 00' 16"	25	K20	-150871.837	-55084.053	22	25	K20	-150871.837	-55084.053	15.027	15.028	187° 42' 23"	180° 00' 27"	26	K21	-150886.728	-55086.068	23	26	K21	-150886.728	-55086.068	19.996	19.997	187° 42' 50"	180° 01' 21"	27	K22	-150906.543	-55088.752	24	27	K22	-150906.543	-55088.752	12.881	12.882	187° 44' 11"	220° 46' 05"	28	K23	-150919.307	-55090.486																																																																																																																																																																																																											
18	21	K16	-150845.400	-55081.140	1.018	1.018	147° 45' 43"	219° 56' 50"																																																																																																																																																																																																																																																																																																						
	22	K17	-150846.261	-55080.597					19	22	K17	-150846.261	-55080.597	0.827	0.827	187° 42' 33"	179° 59' 03"	23	K18	-150847.081	-55080.708	20	23	K18	-150847.081	-55080.708	20.004	20.005	187° 41' 36"	180° 00' 31"	24	K19	-150866.905	-55083.386	21	24	K19	-150866.905	-55083.386	4.977	4.977	187° 42' 07"	180° 00' 16"	25	K20	-150871.837	-55084.053	22	25	K20	-150871.837	-55084.053	15.027	15.028	187° 42' 23"	180° 00' 27"	26	K21	-150886.728	-55086.068	23	26	K21	-150886.728	-55086.068	19.996	19.997	187° 42' 50"	180° 01' 21"	27	K22	-150906.543	-55088.752	24	27	K22	-150906.543	-55088.752	12.881	12.882	187° 44' 11"	220° 46' 05"	28	K23	-150919.307	-55090.486																																																																																																																																																																																																																								
19	22	K17	-150846.261	-55080.597	0.827	0.827	187° 42' 33"	179° 59' 03"																																																																																																																																																																																																																																																																																																						
	23	K18	-150847.081	-55080.708					20	23	K18	-150847.081	-55080.708	20.004	20.005	187° 41' 36"	180° 00' 31"	24	K19	-150866.905	-55083.386	21	24	K19	-150866.905	-55083.386	4.977	4.977	187° 42' 07"	180° 00' 16"	25	K20	-150871.837	-55084.053	22	25	K20	-150871.837	-55084.053	15.027	15.028	187° 42' 23"	180° 00' 27"	26	K21	-150886.728	-55086.068	23	26	K21	-150886.728	-55086.068	19.996	19.997	187° 42' 50"	180° 01' 21"	27	K22	-150906.543	-55088.752	24	27	K22	-150906.543	-55088.752	12.881	12.882	187° 44' 11"	220° 46' 05"	28	K23	-150919.307	-55090.486																																																																																																																																																																																																																																					
20	23	K18	-150847.081	-55080.708	20.004	20.005	187° 41' 36"	180° 00' 31"																																																																																																																																																																																																																																																																																																						
	24	K19	-150866.905	-55083.386					21	24	K19	-150866.905	-55083.386	4.977	4.977	187° 42' 07"	180° 00' 16"	25	K20	-150871.837	-55084.053	22	25	K20	-150871.837	-55084.053	15.027	15.028	187° 42' 23"	180° 00' 27"	26	K21	-150886.728	-55086.068	23	26	K21	-150886.728	-55086.068	19.996	19.997	187° 42' 50"	180° 01' 21"	27	K22	-150906.543	-55088.752	24	27	K22	-150906.543	-55088.752	12.881	12.882	187° 44' 11"	220° 46' 05"	28	K23	-150919.307	-55090.486																																																																																																																																																																																																																																																		
21	24	K19	-150866.905	-55083.386	4.977	4.977	187° 42' 07"	180° 00' 16"																																																																																																																																																																																																																																																																																																						
	25	K20	-150871.837	-55084.053					22	25	K20	-150871.837	-55084.053	15.027	15.028	187° 42' 23"	180° 00' 27"	26	K21	-150886.728	-55086.068	23	26	K21	-150886.728	-55086.068	19.996	19.997	187° 42' 50"	180° 01' 21"	27	K22	-150906.543	-55088.752	24	27	K22	-150906.543	-55088.752	12.881	12.882	187° 44' 11"	220° 46' 05"	28	K23	-150919.307	-55090.486																																																																																																																																																																																																																																																															
22	25	K20	-150871.837	-55084.053	15.027	15.028	187° 42' 23"	180° 00' 27"																																																																																																																																																																																																																																																																																																						
	26	K21	-150886.728	-55086.068					23	26	K21	-150886.728	-55086.068	19.996	19.997	187° 42' 50"	180° 01' 21"	27	K22	-150906.543	-55088.752	24	27	K22	-150906.543	-55088.752	12.881	12.882	187° 44' 11"	220° 46' 05"	28	K23	-150919.307	-55090.486																																																																																																																																																																																																																																																																												
23	26	K21	-150886.728	-55086.068	19.996	19.997	187° 42' 50"	180° 01' 21"																																																																																																																																																																																																																																																																																																						
	27	K22	-150906.543	-55088.752					24	27	K22	-150906.543	-55088.752	12.881	12.882	187° 44' 11"	220° 46' 05"	28	K23	-150919.307	-55090.486																																																																																																																																																																																																																																																																																									
24	27	K22	-150906.543	-55088.752	12.881	12.882	187° 44' 11"	220° 46' 05"																																																																																																																																																																																																																																																																																																						
	28	K23	-150919.307	-55090.486																																																																																																																																																																																																																																																																																																										

距離・方向角の計算書

世界測地系

平成 19 年 8 月 10 日

現場名：出来形確認測量

縮尺係数 0.999938
辺の総合計 917.336

No	点番	点名	X 座標	Y 座標	平面距離	球面距離	方向角	夾角																																																																																																																																																																																																																																																																																																						
25	28	K23	-150919.307	-55090.486	1.932	1.932	228° 30' 16"	136° 30' 38"																																																																																																																																																																																																																																																																																																						
	29	K24	-150920.587	-55091.933					26	29	K24	-150920.587	-55091.933	3.992	3.992	185° 00' 54"	206° 48' 10"	30	K25	-150924.564	-55092.282	27	30	K25	-150924.564	-55092.282	0.518	0.518	211° 49' 04"	111° 05' 09"	31	K26	-150925.004	-55092.555	28	31	K26	-150925.004	-55092.555	1.820	1.820	142° 54' 13"	224° 46' 03"	32	K27	-150926.456	-55091.457	29	32	K27	-150926.456	-55091.457	19.897	19.898	187° 40' 16"	180° 06' 46"	33	K28	-150946.175	-55094.113	30	33	K28	-150946.175	-55094.113	3.020	3.020	187° 47' 02"	181° 34' 59"	34	K29	-150949.167	-55094.522	31	34	K29	-150949.167	-55094.522	43.383	43.386	189° 22' 01"	179° 47' 50"	35	K30	-150991.972	-55101.583	32	35	K30	-150991.972	-55101.583	9.381	9.382	189° 09' 51"	243° 36' 32"	36	K31	-151001.233	-55103.077	33	36	K31	-151001.233	-55103.077	13.138	13.139	252° 46' 23"	171° 48' 41"	37	K32	-151005.124	-55115.626	34	37	K32	-151005.124	-55115.626	2.118	2.118	244° 35' 04"	207° 21' 29"	38	K33	-151006.033	-55117.539	35	38	K33	-151006.033	-55117.539	28.618	28.620	271° 56' 33"	181° 20' 28"	39	K34	-151005.063	-55146.141	36	39	K34	-151005.063	-55146.141	15.660	15.661	273° 17' 01"	179° 41' 31"	40	K35	-151004.166	-55161.775	37	40	K35	-151004.166	-55161.775	38.586	38.588	272° 58' 32"	180° 11' 34"	41	K36	-151002.163	-55200.309	38	41	K36	-151002.163	-55200.309	2.207	2.207	273° 10' 06"	178° 07' 06"	42	K37	-151002.041	-55202.513	39	42	K37	-151002.041	-55202.513	5.968	5.968	271° 17' 12"	269° 15' 30"	43	K38	-151001.907	-55208.479	40	43	K38	-151001.907	-55208.479	6.518	6.518	0° 32' 42"	182° 12' 18"	44	K39	-150995.389	-55208.417	41	44	K39	-150995.389	-55208.417	4.044	4.044	2° 45' 00"	177° 14' 09"	45	K40	-150991.350	-55208.223	42	45	K40	-150991.350	-55208.223	16.293	16.294	359° 59' 09"	180° 23' 24"	46	K41	-150975.057	-55208.227	43	46	K41	-150975.057	-55208.227	28.055	28.057	0° 22' 33"	180° 35' 37"	47	K42	-150947.003	-55208.043	44	47	K42	-150947.003	-55208.043	7.625	7.625	0° 58' 10"	177° 08' 45"	48	K43	-150939.379	-55207.914	45	48	K43	-150939.379	-55207.914	1.247	1.247	358° 06' 55"	182° 22' 18"	49	K44	-150938.133	-55207.955	46	49	K44	-150938.133	-55207.955	32.944	32.946	0° 29' 13"	179° 57' 31"	50	K45	-150905.190	-55207.675	47	50	K45	-150905.190	-55207.675	13.890	13.891	0° 26' 44"	180° 44' 19"	51	K46	-150891.300	-55207.567	48	51	K46	-150891.300	-55207.567	4.258	4.258	1° 11' 03"
26	29	K24	-150920.587	-55091.933	3.992	3.992	185° 00' 54"	206° 48' 10"																																																																																																																																																																																																																																																																																																						
	30	K25	-150924.564	-55092.282					27	30	K25	-150924.564	-55092.282	0.518	0.518	211° 49' 04"	111° 05' 09"	31	K26	-150925.004	-55092.555	28	31	K26	-150925.004	-55092.555	1.820	1.820	142° 54' 13"	224° 46' 03"	32	K27	-150926.456	-55091.457	29	32	K27	-150926.456	-55091.457	19.897	19.898	187° 40' 16"	180° 06' 46"	33	K28	-150946.175	-55094.113	30	33	K28	-150946.175	-55094.113	3.020	3.020	187° 47' 02"	181° 34' 59"	34	K29	-150949.167	-55094.522	31	34	K29	-150949.167	-55094.522	43.383	43.386	189° 22' 01"	179° 47' 50"	35	K30	-150991.972	-55101.583	32	35	K30	-150991.972	-55101.583	9.381	9.382	189° 09' 51"	243° 36' 32"	36	K31	-151001.233	-55103.077	33	36	K31	-151001.233	-55103.077	13.138	13.139	252° 46' 23"	171° 48' 41"	37	K32	-151005.124	-55115.626	34	37	K32	-151005.124	-55115.626	2.118	2.118	244° 35' 04"	207° 21' 29"	38	K33	-151006.033	-55117.539	35	38	K33	-151006.033	-55117.539	28.618	28.620	271° 56' 33"	181° 20' 28"	39	K34	-151005.063	-55146.141	36	39	K34	-151005.063	-55146.141	15.660	15.661	273° 17' 01"	179° 41' 31"	40	K35	-151004.166	-55161.775	37	40	K35	-151004.166	-55161.775	38.586	38.588	272° 58' 32"	180° 11' 34"	41	K36	-151002.163	-55200.309	38	41	K36	-151002.163	-55200.309	2.207	2.207	273° 10' 06"	178° 07' 06"	42	K37	-151002.041	-55202.513	39	42	K37	-151002.041	-55202.513	5.968	5.968	271° 17' 12"	269° 15' 30"	43	K38	-151001.907	-55208.479	40	43	K38	-151001.907	-55208.479	6.518	6.518	0° 32' 42"	182° 12' 18"	44	K39	-150995.389	-55208.417	41	44	K39	-150995.389	-55208.417	4.044	4.044	2° 45' 00"	177° 14' 09"	45	K40	-150991.350	-55208.223	42	45	K40	-150991.350	-55208.223	16.293	16.294	359° 59' 09"	180° 23' 24"	46	K41	-150975.057	-55208.227	43	46	K41	-150975.057	-55208.227	28.055	28.057	0° 22' 33"	180° 35' 37"	47	K42	-150947.003	-55208.043	44	47	K42	-150947.003	-55208.043	7.625	7.625	0° 58' 10"	177° 08' 45"	48	K43	-150939.379	-55207.914	45	48	K43	-150939.379	-55207.914	1.247	1.247	358° 06' 55"	182° 22' 18"	49	K44	-150938.133	-55207.955	46	49	K44	-150938.133	-55207.955	32.944	32.946	0° 29' 13"	179° 57' 31"	50	K45	-150905.190	-55207.675	47	50	K45	-150905.190	-55207.675	13.890	13.891	0° 26' 44"	180° 44' 19"	51	K46	-150891.300	-55207.567	48	51	K46	-150891.300	-55207.567	4.258	4.258	1° 11' 03"	179° 51' 47"	52	K47	-150887.043	-55207.479								
27	30	K25	-150924.564	-55092.282	0.518	0.518	211° 49' 04"	111° 05' 09"																																																																																																																																																																																																																																																																																																						
	31	K26	-150925.004	-55092.555					28	31	K26	-150925.004	-55092.555	1.820	1.820	142° 54' 13"	224° 46' 03"	32	K27	-150926.456	-55091.457	29	32	K27	-150926.456	-55091.457	19.897	19.898	187° 40' 16"	180° 06' 46"	33	K28	-150946.175	-55094.113	30	33	K28	-150946.175	-55094.113	3.020	3.020	187° 47' 02"	181° 34' 59"	34	K29	-150949.167	-55094.522	31	34	K29	-150949.167	-55094.522	43.383	43.386	189° 22' 01"	179° 47' 50"	35	K30	-150991.972	-55101.583	32	35	K30	-150991.972	-55101.583	9.381	9.382	189° 09' 51"	243° 36' 32"	36	K31	-151001.233	-55103.077	33	36	K31	-151001.233	-55103.077	13.138	13.139	252° 46' 23"	171° 48' 41"	37	K32	-151005.124	-55115.626	34	37	K32	-151005.124	-55115.626	2.118	2.118	244° 35' 04"	207° 21' 29"	38	K33	-151006.033	-55117.539	35	38	K33	-151006.033	-55117.539	28.618	28.620	271° 56' 33"	181° 20' 28"	39	K34	-151005.063	-55146.141	36	39	K34	-151005.063	-55146.141	15.660	15.661	273° 17' 01"	179° 41' 31"	40	K35	-151004.166	-55161.775	37	40	K35	-151004.166	-55161.775	38.586	38.588	272° 58' 32"	180° 11' 34"	41	K36	-151002.163	-55200.309	38	41	K36	-151002.163	-55200.309	2.207	2.207	273° 10' 06"	178° 07' 06"	42	K37	-151002.041	-55202.513	39	42	K37	-151002.041	-55202.513	5.968	5.968	271° 17' 12"	269° 15' 30"	43	K38	-151001.907	-55208.479	40	43	K38	-151001.907	-55208.479	6.518	6.518	0° 32' 42"	182° 12' 18"	44	K39	-150995.389	-55208.417	41	44	K39	-150995.389	-55208.417	4.044	4.044	2° 45' 00"	177° 14' 09"	45	K40	-150991.350	-55208.223	42	45	K40	-150991.350	-55208.223	16.293	16.294	359° 59' 09"	180° 23' 24"	46	K41	-150975.057	-55208.227	43	46	K41	-150975.057	-55208.227	28.055	28.057	0° 22' 33"	180° 35' 37"	47	K42	-150947.003	-55208.043	44	47	K42	-150947.003	-55208.043	7.625	7.625	0° 58' 10"	177° 08' 45"	48	K43	-150939.379	-55207.914	45	48	K43	-150939.379	-55207.914	1.247	1.247	358° 06' 55"	182° 22' 18"	49	K44	-150938.133	-55207.955	46	49	K44	-150938.133	-55207.955	32.944	32.946	0° 29' 13"	179° 57' 31"	50	K45	-150905.190	-55207.675	47	50	K45	-150905.190	-55207.675	13.890	13.891	0° 26' 44"	180° 44' 19"	51	K46	-150891.300	-55207.567	48	51	K46	-150891.300	-55207.567	4.258	4.258	1° 11' 03"	179° 51' 47"	52	K47	-150887.043	-55207.479																					
28	31	K26	-150925.004	-55092.555	1.820	1.820	142° 54' 13"	224° 46' 03"																																																																																																																																																																																																																																																																																																						
	32	K27	-150926.456	-55091.457					29	32	K27	-150926.456	-55091.457	19.897	19.898	187° 40' 16"	180° 06' 46"	33	K28	-150946.175	-55094.113	30	33	K28	-150946.175	-55094.113	3.020	3.020	187° 47' 02"	181° 34' 59"	34	K29	-150949.167	-55094.522	31	34	K29	-150949.167	-55094.522	43.383	43.386	189° 22' 01"	179° 47' 50"	35	K30	-150991.972	-55101.583	32	35	K30	-150991.972	-55101.583	9.381	9.382	189° 09' 51"	243° 36' 32"	36	K31	-151001.233	-55103.077	33	36	K31	-151001.233	-55103.077	13.138	13.139	252° 46' 23"	171° 48' 41"	37	K32	-151005.124	-55115.626	34	37	K32	-151005.124	-55115.626	2.118	2.118	244° 35' 04"	207° 21' 29"	38	K33	-151006.033	-55117.539	35	38	K33	-151006.033	-55117.539	28.618	28.620	271° 56' 33"	181° 20' 28"	39	K34	-151005.063	-55146.141	36	39	K34	-151005.063	-55146.141	15.660	15.661	273° 17' 01"	179° 41' 31"	40	K35	-151004.166	-55161.775	37	40	K35	-151004.166	-55161.775	38.586	38.588	272° 58' 32"	180° 11' 34"	41	K36	-151002.163	-55200.309	38	41	K36	-151002.163	-55200.309	2.207	2.207	273° 10' 06"	178° 07' 06"	42	K37	-151002.041	-55202.513	39	42	K37	-151002.041	-55202.513	5.968	5.968	271° 17' 12"	269° 15' 30"	43	K38	-151001.907	-55208.479	40	43	K38	-151001.907	-55208.479	6.518	6.518	0° 32' 42"	182° 12' 18"	44	K39	-150995.389	-55208.417	41	44	K39	-150995.389	-55208.417	4.044	4.044	2° 45' 00"	177° 14' 09"	45	K40	-150991.350	-55208.223	42	45	K40	-150991.350	-55208.223	16.293	16.294	359° 59' 09"	180° 23' 24"	46	K41	-150975.057	-55208.227	43	46	K41	-150975.057	-55208.227	28.055	28.057	0° 22' 33"	180° 35' 37"	47	K42	-150947.003	-55208.043	44	47	K42	-150947.003	-55208.043	7.625	7.625	0° 58' 10"	177° 08' 45"	48	K43	-150939.379	-55207.914	45	48	K43	-150939.379	-55207.914	1.247	1.247	358° 06' 55"	182° 22' 18"	49	K44	-150938.133	-55207.955	46	49	K44	-150938.133	-55207.955	32.944	32.946	0° 29' 13"	179° 57' 31"	50	K45	-150905.190	-55207.675	47	50	K45	-150905.190	-55207.675	13.890	13.891	0° 26' 44"	180° 44' 19"	51	K46	-150891.300	-55207.567	48	51	K46	-150891.300	-55207.567	4.258	4.258	1° 11' 03"	179° 51' 47"	52	K47	-150887.043	-55207.479																																		
29	32	K27	-150926.456	-55091.457	19.897	19.898	187° 40' 16"	180° 06' 46"																																																																																																																																																																																																																																																																																																						
	33	K28	-150946.175	-55094.113					30	33	K28	-150946.175	-55094.113	3.020	3.020	187° 47' 02"	181° 34' 59"	34	K29	-150949.167	-55094.522	31	34	K29	-150949.167	-55094.522	43.383	43.386	189° 22' 01"	179° 47' 50"	35	K30	-150991.972	-55101.583	32	35	K30	-150991.972	-55101.583	9.381	9.382	189° 09' 51"	243° 36' 32"	36	K31	-151001.233	-55103.077	33	36	K31	-151001.233	-55103.077	13.138	13.139	252° 46' 23"	171° 48' 41"	37	K32	-151005.124	-55115.626	34	37	K32	-151005.124	-55115.626	2.118	2.118	244° 35' 04"	207° 21' 29"	38	K33	-151006.033	-55117.539	35	38	K33	-151006.033	-55117.539	28.618	28.620	271° 56' 33"	181° 20' 28"	39	K34	-151005.063	-55146.141	36	39	K34	-151005.063	-55146.141	15.660	15.661	273° 17' 01"	179° 41' 31"	40	K35	-151004.166	-55161.775	37	40	K35	-151004.166	-55161.775	38.586	38.588	272° 58' 32"	180° 11' 34"	41	K36	-151002.163	-55200.309	38	41	K36	-151002.163	-55200.309	2.207	2.207	273° 10' 06"	178° 07' 06"	42	K37	-151002.041	-55202.513	39	42	K37	-151002.041	-55202.513	5.968	5.968	271° 17' 12"	269° 15' 30"	43	K38	-151001.907	-55208.479	40	43	K38	-151001.907	-55208.479	6.518	6.518	0° 32' 42"	182° 12' 18"	44	K39	-150995.389	-55208.417	41	44	K39	-150995.389	-55208.417	4.044	4.044	2° 45' 00"	177° 14' 09"	45	K40	-150991.350	-55208.223	42	45	K40	-150991.350	-55208.223	16.293	16.294	359° 59' 09"	180° 23' 24"	46	K41	-150975.057	-55208.227	43	46	K41	-150975.057	-55208.227	28.055	28.057	0° 22' 33"	180° 35' 37"	47	K42	-150947.003	-55208.043	44	47	K42	-150947.003	-55208.043	7.625	7.625	0° 58' 10"	177° 08' 45"	48	K43	-150939.379	-55207.914	45	48	K43	-150939.379	-55207.914	1.247	1.247	358° 06' 55"	182° 22' 18"	49	K44	-150938.133	-55207.955	46	49	K44	-150938.133	-55207.955	32.944	32.946	0° 29' 13"	179° 57' 31"	50	K45	-150905.190	-55207.675	47	50	K45	-150905.190	-55207.675	13.890	13.891	0° 26' 44"	180° 44' 19"	51	K46	-150891.300	-55207.567	48	51	K46	-150891.300	-55207.567	4.258	4.258	1° 11' 03"	179° 51' 47"	52	K47	-150887.043	-55207.479																																															
30	33	K28	-150946.175	-55094.113	3.020	3.020	187° 47' 02"	181° 34' 59"																																																																																																																																																																																																																																																																																																						
	34	K29	-150949.167	-55094.522					31	34	K29	-150949.167	-55094.522	43.383	43.386	189° 22' 01"	179° 47' 50"	35	K30	-150991.972	-55101.583	32	35	K30	-150991.972	-55101.583	9.381	9.382	189° 09' 51"	243° 36' 32"	36	K31	-151001.233	-55103.077	33	36	K31	-151001.233	-55103.077	13.138	13.139	252° 46' 23"	171° 48' 41"	37	K32	-151005.124	-55115.626	34	37	K32	-151005.124	-55115.626	2.118	2.118	244° 35' 04"	207° 21' 29"	38	K33	-151006.033	-55117.539	35	38	K33	-151006.033	-55117.539	28.618	28.620	271° 56' 33"	181° 20' 28"	39	K34	-151005.063	-55146.141	36	39	K34	-151005.063	-55146.141	15.660	15.661	273° 17' 01"	179° 41' 31"	40	K35	-151004.166	-55161.775	37	40	K35	-151004.166	-55161.775	38.586	38.588	272° 58' 32"	180° 11' 34"	41	K36	-151002.163	-55200.309	38	41	K36	-151002.163	-55200.309	2.207	2.207	273° 10' 06"	178° 07' 06"	42	K37	-151002.041	-55202.513	39	42	K37	-151002.041	-55202.513	5.968	5.968	271° 17' 12"	269° 15' 30"	43	K38	-151001.907	-55208.479	40	43	K38	-151001.907	-55208.479	6.518	6.518	0° 32' 42"	182° 12' 18"	44	K39	-150995.389	-55208.417	41	44	K39	-150995.389	-55208.417	4.044	4.044	2° 45' 00"	177° 14' 09"	45	K40	-150991.350	-55208.223	42	45	K40	-150991.350	-55208.223	16.293	16.294	359° 59' 09"	180° 23' 24"	46	K41	-150975.057	-55208.227	43	46	K41	-150975.057	-55208.227	28.055	28.057	0° 22' 33"	180° 35' 37"	47	K42	-150947.003	-55208.043	44	47	K42	-150947.003	-55208.043	7.625	7.625	0° 58' 10"	177° 08' 45"	48	K43	-150939.379	-55207.914	45	48	K43	-150939.379	-55207.914	1.247	1.247	358° 06' 55"	182° 22' 18"	49	K44	-150938.133	-55207.955	46	49	K44	-150938.133	-55207.955	32.944	32.946	0° 29' 13"	179° 57' 31"	50	K45	-150905.190	-55207.675	47	50	K45	-150905.190	-55207.675	13.890	13.891	0° 26' 44"	180° 44' 19"	51	K46	-150891.300	-55207.567	48	51	K46	-150891.300	-55207.567	4.258	4.258	1° 11' 03"	179° 51' 47"	52	K47	-150887.043	-55207.479																																																												
31	34	K29	-150949.167	-55094.522	43.383	43.386	189° 22' 01"	179° 47' 50"																																																																																																																																																																																																																																																																																																						
	35	K30	-150991.972	-55101.583					32	35	K30	-150991.972	-55101.583	9.381	9.382	189° 09' 51"	243° 36' 32"	36	K31	-151001.233	-55103.077	33	36	K31	-151001.233	-55103.077	13.138	13.139	252° 46' 23"	171° 48' 41"	37	K32	-151005.124	-55115.626	34	37	K32	-151005.124	-55115.626	2.118	2.118	244° 35' 04"	207° 21' 29"	38	K33	-151006.033	-55117.539	35	38	K33	-151006.033	-55117.539	28.618	28.620	271° 56' 33"	181° 20' 28"	39	K34	-151005.063	-55146.141	36	39	K34	-151005.063	-55146.141	15.660	15.661	273° 17' 01"	179° 41' 31"	40	K35	-151004.166	-55161.775	37	40	K35	-151004.166	-55161.775	38.586	38.588	272° 58' 32"	180° 11' 34"	41	K36	-151002.163	-55200.309	38	41	K36	-151002.163	-55200.309	2.207	2.207	273° 10' 06"	178° 07' 06"	42	K37	-151002.041	-55202.513	39	42	K37	-151002.041	-55202.513	5.968	5.968	271° 17' 12"	269° 15' 30"	43	K38	-151001.907	-55208.479	40	43	K38	-151001.907	-55208.479	6.518	6.518	0° 32' 42"	182° 12' 18"	44	K39	-150995.389	-55208.417	41	44	K39	-150995.389	-55208.417	4.044	4.044	2° 45' 00"	177° 14' 09"	45	K40	-150991.350	-55208.223	42	45	K40	-150991.350	-55208.223	16.293	16.294	359° 59' 09"	180° 23' 24"	46	K41	-150975.057	-55208.227	43	46	K41	-150975.057	-55208.227	28.055	28.057	0° 22' 33"	180° 35' 37"	47	K42	-150947.003	-55208.043	44	47	K42	-150947.003	-55208.043	7.625	7.625	0° 58' 10"	177° 08' 45"	48	K43	-150939.379	-55207.914	45	48	K43	-150939.379	-55207.914	1.247	1.247	358° 06' 55"	182° 22' 18"	49	K44	-150938.133	-55207.955	46	49	K44	-150938.133	-55207.955	32.944	32.946	0° 29' 13"	179° 57' 31"	50	K45	-150905.190	-55207.675	47	50	K45	-150905.190	-55207.675	13.890	13.891	0° 26' 44"	180° 44' 19"	51	K46	-150891.300	-55207.567	48	51	K46	-150891.300	-55207.567	4.258	4.258	1° 11' 03"	179° 51' 47"	52	K47	-150887.043	-55207.479																																																																									
32	35	K30	-150991.972	-55101.583	9.381	9.382	189° 09' 51"	243° 36' 32"																																																																																																																																																																																																																																																																																																						
	36	K31	-151001.233	-55103.077					33	36	K31	-151001.233	-55103.077	13.138	13.139	252° 46' 23"	171° 48' 41"	37	K32	-151005.124	-55115.626	34	37	K32	-151005.124	-55115.626	2.118	2.118	244° 35' 04"	207° 21' 29"	38	K33	-151006.033	-55117.539	35	38	K33	-151006.033	-55117.539	28.618	28.620	271° 56' 33"	181° 20' 28"	39	K34	-151005.063	-55146.141	36	39	K34	-151005.063	-55146.141	15.660	15.661	273° 17' 01"	179° 41' 31"	40	K35	-151004.166	-55161.775	37	40	K35	-151004.166	-55161.775	38.586	38.588	272° 58' 32"	180° 11' 34"	41	K36	-151002.163	-55200.309	38	41	K36	-151002.163	-55200.309	2.207	2.207	273° 10' 06"	178° 07' 06"	42	K37	-151002.041	-55202.513	39	42	K37	-151002.041	-55202.513	5.968	5.968	271° 17' 12"	269° 15' 30"	43	K38	-151001.907	-55208.479	40	43	K38	-151001.907	-55208.479	6.518	6.518	0° 32' 42"	182° 12' 18"	44	K39	-150995.389	-55208.417	41	44	K39	-150995.389	-55208.417	4.044	4.044	2° 45' 00"	177° 14' 09"	45	K40	-150991.350	-55208.223	42	45	K40	-150991.350	-55208.223	16.293	16.294	359° 59' 09"	180° 23' 24"	46	K41	-150975.057	-55208.227	43	46	K41	-150975.057	-55208.227	28.055	28.057	0° 22' 33"	180° 35' 37"	47	K42	-150947.003	-55208.043	44	47	K42	-150947.003	-55208.043	7.625	7.625	0° 58' 10"	177° 08' 45"	48	K43	-150939.379	-55207.914	45	48	K43	-150939.379	-55207.914	1.247	1.247	358° 06' 55"	182° 22' 18"	49	K44	-150938.133	-55207.955	46	49	K44	-150938.133	-55207.955	32.944	32.946	0° 29' 13"	179° 57' 31"	50	K45	-150905.190	-55207.675	47	50	K45	-150905.190	-55207.675	13.890	13.891	0° 26' 44"	180° 44' 19"	51	K46	-150891.300	-55207.567	48	51	K46	-150891.300	-55207.567	4.258	4.258	1° 11' 03"	179° 51' 47"	52	K47	-150887.043	-55207.479																																																																																						
33	36	K31	-151001.233	-55103.077	13.138	13.139	252° 46' 23"	171° 48' 41"																																																																																																																																																																																																																																																																																																						
	37	K32	-151005.124	-55115.626					34	37	K32	-151005.124	-55115.626	2.118	2.118	244° 35' 04"	207° 21' 29"	38	K33	-151006.033	-55117.539	35	38	K33	-151006.033	-55117.539	28.618	28.620	271° 56' 33"	181° 20' 28"	39	K34	-151005.063	-55146.141	36	39	K34	-151005.063	-55146.141	15.660	15.661	273° 17' 01"	179° 41' 31"	40	K35	-151004.166	-55161.775	37	40	K35	-151004.166	-55161.775	38.586	38.588	272° 58' 32"	180° 11' 34"	41	K36	-151002.163	-55200.309	38	41	K36	-151002.163	-55200.309	2.207	2.207	273° 10' 06"	178° 07' 06"	42	K37	-151002.041	-55202.513	39	42	K37	-151002.041	-55202.513	5.968	5.968	271° 17' 12"	269° 15' 30"	43	K38	-151001.907	-55208.479	40	43	K38	-151001.907	-55208.479	6.518	6.518	0° 32' 42"	182° 12' 18"	44	K39	-150995.389	-55208.417	41	44	K39	-150995.389	-55208.417	4.044	4.044	2° 45' 00"	177° 14' 09"	45	K40	-150991.350	-55208.223	42	45	K40	-150991.350	-55208.223	16.293	16.294	359° 59' 09"	180° 23' 24"	46	K41	-150975.057	-55208.227	43	46	K41	-150975.057	-55208.227	28.055	28.057	0° 22' 33"	180° 35' 37"	47	K42	-150947.003	-55208.043	44	47	K42	-150947.003	-55208.043	7.625	7.625	0° 58' 10"	177° 08' 45"	48	K43	-150939.379	-55207.914	45	48	K43	-150939.379	-55207.914	1.247	1.247	358° 06' 55"	182° 22' 18"	49	K44	-150938.133	-55207.955	46	49	K44	-150938.133	-55207.955	32.944	32.946	0° 29' 13"	179° 57' 31"	50	K45	-150905.190	-55207.675	47	50	K45	-150905.190	-55207.675	13.890	13.891	0° 26' 44"	180° 44' 19"	51	K46	-150891.300	-55207.567	48	51	K46	-150891.300	-55207.567	4.258	4.258	1° 11' 03"	179° 51' 47"	52	K47	-150887.043	-55207.479																																																																																																			
34	37	K32	-151005.124	-55115.626	2.118	2.118	244° 35' 04"	207° 21' 29"																																																																																																																																																																																																																																																																																																						
	38	K33	-151006.033	-55117.539					35	38	K33	-151006.033	-55117.539	28.618	28.620	271° 56' 33"	181° 20' 28"	39	K34	-151005.063	-55146.141	36	39	K34	-151005.063	-55146.141	15.660	15.661	273° 17' 01"	179° 41' 31"	40	K35	-151004.166	-55161.775	37	40	K35	-151004.166	-55161.775	38.586	38.588	272° 58' 32"	180° 11' 34"	41	K36	-151002.163	-55200.309	38	41	K36	-151002.163	-55200.309	2.207	2.207	273° 10' 06"	178° 07' 06"	42	K37	-151002.041	-55202.513	39	42	K37	-151002.041	-55202.513	5.968	5.968	271° 17' 12"	269° 15' 30"	43	K38	-151001.907	-55208.479	40	43	K38	-151001.907	-55208.479	6.518	6.518	0° 32' 42"	182° 12' 18"	44	K39	-150995.389	-55208.417	41	44	K39	-150995.389	-55208.417	4.044	4.044	2° 45' 00"	177° 14' 09"	45	K40	-150991.350	-55208.223	42	45	K40	-150991.350	-55208.223	16.293	16.294	359° 59' 09"	180° 23' 24"	46	K41	-150975.057	-55208.227	43	46	K41	-150975.057	-55208.227	28.055	28.057	0° 22' 33"	180° 35' 37"	47	K42	-150947.003	-55208.043	44	47	K42	-150947.003	-55208.043	7.625	7.625	0° 58' 10"	177° 08' 45"	48	K43	-150939.379	-55207.914	45	48	K43	-150939.379	-55207.914	1.247	1.247	358° 06' 55"	182° 22' 18"	49	K44	-150938.133	-55207.955	46	49	K44	-150938.133	-55207.955	32.944	32.946	0° 29' 13"	179° 57' 31"	50	K45	-150905.190	-55207.675	47	50	K45	-150905.190	-55207.675	13.890	13.891	0° 26' 44"	180° 44' 19"	51	K46	-150891.300	-55207.567	48	51	K46	-150891.300	-55207.567	4.258	4.258	1° 11' 03"	179° 51' 47"	52	K47	-150887.043	-55207.479																																																																																																																
35	38	K33	-151006.033	-55117.539	28.618	28.620	271° 56' 33"	181° 20' 28"																																																																																																																																																																																																																																																																																																						
	39	K34	-151005.063	-55146.141					36	39	K34	-151005.063	-55146.141	15.660	15.661	273° 17' 01"	179° 41' 31"	40	K35	-151004.166	-55161.775	37	40	K35	-151004.166	-55161.775	38.586	38.588	272° 58' 32"	180° 11' 34"	41	K36	-151002.163	-55200.309	38	41	K36	-151002.163	-55200.309	2.207	2.207	273° 10' 06"	178° 07' 06"	42	K37	-151002.041	-55202.513	39	42	K37	-151002.041	-55202.513	5.968	5.968	271° 17' 12"	269° 15' 30"	43	K38	-151001.907	-55208.479	40	43	K38	-151001.907	-55208.479	6.518	6.518	0° 32' 42"	182° 12' 18"	44	K39	-150995.389	-55208.417	41	44	K39	-150995.389	-55208.417	4.044	4.044	2° 45' 00"	177° 14' 09"	45	K40	-150991.350	-55208.223	42	45	K40	-150991.350	-55208.223	16.293	16.294	359° 59' 09"	180° 23' 24"	46	K41	-150975.057	-55208.227	43	46	K41	-150975.057	-55208.227	28.055	28.057	0° 22' 33"	180° 35' 37"	47	K42	-150947.003	-55208.043	44	47	K42	-150947.003	-55208.043	7.625	7.625	0° 58' 10"	177° 08' 45"	48	K43	-150939.379	-55207.914	45	48	K43	-150939.379	-55207.914	1.247	1.247	358° 06' 55"	182° 22' 18"	49	K44	-150938.133	-55207.955	46	49	K44	-150938.133	-55207.955	32.944	32.946	0° 29' 13"	179° 57' 31"	50	K45	-150905.190	-55207.675	47	50	K45	-150905.190	-55207.675	13.890	13.891	0° 26' 44"	180° 44' 19"	51	K46	-150891.300	-55207.567	48	51	K46	-150891.300	-55207.567	4.258	4.258	1° 11' 03"	179° 51' 47"	52	K47	-150887.043	-55207.479																																																																																																																													
36	39	K34	-151005.063	-55146.141	15.660	15.661	273° 17' 01"	179° 41' 31"																																																																																																																																																																																																																																																																																																						
	40	K35	-151004.166	-55161.775					37	40	K35	-151004.166	-55161.775	38.586	38.588	272° 58' 32"	180° 11' 34"	41	K36	-151002.163	-55200.309	38	41	K36	-151002.163	-55200.309	2.207	2.207	273° 10' 06"	178° 07' 06"	42	K37	-151002.041	-55202.513	39	42	K37	-151002.041	-55202.513	5.968	5.968	271° 17' 12"	269° 15' 30"	43	K38	-151001.907	-55208.479	40	43	K38	-151001.907	-55208.479	6.518	6.518	0° 32' 42"	182° 12' 18"	44	K39	-150995.389	-55208.417	41	44	K39	-150995.389	-55208.417	4.044	4.044	2° 45' 00"	177° 14' 09"	45	K40	-150991.350	-55208.223	42	45	K40	-150991.350	-55208.223	16.293	16.294	359° 59' 09"	180° 23' 24"	46	K41	-150975.057	-55208.227	43	46	K41	-150975.057	-55208.227	28.055	28.057	0° 22' 33"	180° 35' 37"	47	K42	-150947.003	-55208.043	44	47	K42	-150947.003	-55208.043	7.625	7.625	0° 58' 10"	177° 08' 45"	48	K43	-150939.379	-55207.914	45	48	K43	-150939.379	-55207.914	1.247	1.247	358° 06' 55"	182° 22' 18"	49	K44	-150938.133	-55207.955	46	49	K44	-150938.133	-55207.955	32.944	32.946	0° 29' 13"	179° 57' 31"	50	K45	-150905.190	-55207.675	47	50	K45	-150905.190	-55207.675	13.890	13.891	0° 26' 44"	180° 44' 19"	51	K46	-150891.300	-55207.567	48	51	K46	-150891.300	-55207.567	4.258	4.258	1° 11' 03"	179° 51' 47"	52	K47	-150887.043	-55207.479																																																																																																																																										
37	40	K35	-151004.166	-55161.775	38.586	38.588	272° 58' 32"	180° 11' 34"																																																																																																																																																																																																																																																																																																						
	41	K36	-151002.163	-55200.309					38	41	K36	-151002.163	-55200.309	2.207	2.207	273° 10' 06"	178° 07' 06"	42	K37	-151002.041	-55202.513	39	42	K37	-151002.041	-55202.513	5.968	5.968	271° 17' 12"	269° 15' 30"	43	K38	-151001.907	-55208.479	40	43	K38	-151001.907	-55208.479	6.518	6.518	0° 32' 42"	182° 12' 18"	44	K39	-150995.389	-55208.417	41	44	K39	-150995.389	-55208.417	4.044	4.044	2° 45' 00"	177° 14' 09"	45	K40	-150991.350	-55208.223	42	45	K40	-150991.350	-55208.223	16.293	16.294	359° 59' 09"	180° 23' 24"	46	K41	-150975.057	-55208.227	43	46	K41	-150975.057	-55208.227	28.055	28.057	0° 22' 33"	180° 35' 37"	47	K42	-150947.003	-55208.043	44	47	K42	-150947.003	-55208.043	7.625	7.625	0° 58' 10"	177° 08' 45"	48	K43	-150939.379	-55207.914	45	48	K43	-150939.379	-55207.914	1.247	1.247	358° 06' 55"	182° 22' 18"	49	K44	-150938.133	-55207.955	46	49	K44	-150938.133	-55207.955	32.944	32.946	0° 29' 13"	179° 57' 31"	50	K45	-150905.190	-55207.675	47	50	K45	-150905.190	-55207.675	13.890	13.891	0° 26' 44"	180° 44' 19"	51	K46	-150891.300	-55207.567	48	51	K46	-150891.300	-55207.567	4.258	4.258	1° 11' 03"	179° 51' 47"	52	K47	-150887.043	-55207.479																																																																																																																																																							
38	41	K36	-151002.163	-55200.309	2.207	2.207	273° 10' 06"	178° 07' 06"																																																																																																																																																																																																																																																																																																						
	42	K37	-151002.041	-55202.513					39	42	K37	-151002.041	-55202.513	5.968	5.968	271° 17' 12"	269° 15' 30"	43	K38	-151001.907	-55208.479	40	43	K38	-151001.907	-55208.479	6.518	6.518	0° 32' 42"	182° 12' 18"	44	K39	-150995.389	-55208.417	41	44	K39	-150995.389	-55208.417	4.044	4.044	2° 45' 00"	177° 14' 09"	45	K40	-150991.350	-55208.223	42	45	K40	-150991.350	-55208.223	16.293	16.294	359° 59' 09"	180° 23' 24"	46	K41	-150975.057	-55208.227	43	46	K41	-150975.057	-55208.227	28.055	28.057	0° 22' 33"	180° 35' 37"	47	K42	-150947.003	-55208.043	44	47	K42	-150947.003	-55208.043	7.625	7.625	0° 58' 10"	177° 08' 45"	48	K43	-150939.379	-55207.914	45	48	K43	-150939.379	-55207.914	1.247	1.247	358° 06' 55"	182° 22' 18"	49	K44	-150938.133	-55207.955	46	49	K44	-150938.133	-55207.955	32.944	32.946	0° 29' 13"	179° 57' 31"	50	K45	-150905.190	-55207.675	47	50	K45	-150905.190	-55207.675	13.890	13.891	0° 26' 44"	180° 44' 19"	51	K46	-150891.300	-55207.567	48	51	K46	-150891.300	-55207.567	4.258	4.258	1° 11' 03"	179° 51' 47"	52	K47	-150887.043	-55207.479																																																																																																																																																																				
39	42	K37	-151002.041	-55202.513	5.968	5.968	271° 17' 12"	269° 15' 30"																																																																																																																																																																																																																																																																																																						
	43	K38	-151001.907	-55208.479					40	43	K38	-151001.907	-55208.479	6.518	6.518	0° 32' 42"	182° 12' 18"	44	K39	-150995.389	-55208.417	41	44	K39	-150995.389	-55208.417	4.044	4.044	2° 45' 00"	177° 14' 09"	45	K40	-150991.350	-55208.223	42	45	K40	-150991.350	-55208.223	16.293	16.294	359° 59' 09"	180° 23' 24"	46	K41	-150975.057	-55208.227	43	46	K41	-150975.057	-55208.227	28.055	28.057	0° 22' 33"	180° 35' 37"	47	K42	-150947.003	-55208.043	44	47	K42	-150947.003	-55208.043	7.625	7.625	0° 58' 10"	177° 08' 45"	48	K43	-150939.379	-55207.914	45	48	K43	-150939.379	-55207.914	1.247	1.247	358° 06' 55"	182° 22' 18"	49	K44	-150938.133	-55207.955	46	49	K44	-150938.133	-55207.955	32.944	32.946	0° 29' 13"	179° 57' 31"	50	K45	-150905.190	-55207.675	47	50	K45	-150905.190	-55207.675	13.890	13.891	0° 26' 44"	180° 44' 19"	51	K46	-150891.300	-55207.567	48	51	K46	-150891.300	-55207.567	4.258	4.258	1° 11' 03"	179° 51' 47"	52	K47	-150887.043	-55207.479																																																																																																																																																																																	
40	43	K38	-151001.907	-55208.479	6.518	6.518	0° 32' 42"	182° 12' 18"																																																																																																																																																																																																																																																																																																						
	44	K39	-150995.389	-55208.417					41	44	K39	-150995.389	-55208.417	4.044	4.044	2° 45' 00"	177° 14' 09"	45	K40	-150991.350	-55208.223	42	45	K40	-150991.350	-55208.223	16.293	16.294	359° 59' 09"	180° 23' 24"	46	K41	-150975.057	-55208.227	43	46	K41	-150975.057	-55208.227	28.055	28.057	0° 22' 33"	180° 35' 37"	47	K42	-150947.003	-55208.043	44	47	K42	-150947.003	-55208.043	7.625	7.625	0° 58' 10"	177° 08' 45"	48	K43	-150939.379	-55207.914	45	48	K43	-150939.379	-55207.914	1.247	1.247	358° 06' 55"	182° 22' 18"	49	K44	-150938.133	-55207.955	46	49	K44	-150938.133	-55207.955	32.944	32.946	0° 29' 13"	179° 57' 31"	50	K45	-150905.190	-55207.675	47	50	K45	-150905.190	-55207.675	13.890	13.891	0° 26' 44"	180° 44' 19"	51	K46	-150891.300	-55207.567	48	51	K46	-150891.300	-55207.567	4.258	4.258	1° 11' 03"	179° 51' 47"	52	K47	-150887.043	-55207.479																																																																																																																																																																																														
41	44	K39	-150995.389	-55208.417	4.044	4.044	2° 45' 00"	177° 14' 09"																																																																																																																																																																																																																																																																																																						
	45	K40	-150991.350	-55208.223					42	45	K40	-150991.350	-55208.223	16.293	16.294	359° 59' 09"	180° 23' 24"	46	K41	-150975.057	-55208.227	43	46	K41	-150975.057	-55208.227	28.055	28.057	0° 22' 33"	180° 35' 37"	47	K42	-150947.003	-55208.043	44	47	K42	-150947.003	-55208.043	7.625	7.625	0° 58' 10"	177° 08' 45"	48	K43	-150939.379	-55207.914	45	48	K43	-150939.379	-55207.914	1.247	1.247	358° 06' 55"	182° 22' 18"	49	K44	-150938.133	-55207.955	46	49	K44	-150938.133	-55207.955	32.944	32.946	0° 29' 13"	179° 57' 31"	50	K45	-150905.190	-55207.675	47	50	K45	-150905.190	-55207.675	13.890	13.891	0° 26' 44"	180° 44' 19"	51	K46	-150891.300	-55207.567	48	51	K46	-150891.300	-55207.567	4.258	4.258	1° 11' 03"	179° 51' 47"	52	K47	-150887.043	-55207.479																																																																																																																																																																																																											
42	45	K40	-150991.350	-55208.223	16.293	16.294	359° 59' 09"	180° 23' 24"																																																																																																																																																																																																																																																																																																						
	46	K41	-150975.057	-55208.227					43	46	K41	-150975.057	-55208.227	28.055	28.057	0° 22' 33"	180° 35' 37"	47	K42	-150947.003	-55208.043	44	47	K42	-150947.003	-55208.043	7.625	7.625	0° 58' 10"	177° 08' 45"	48	K43	-150939.379	-55207.914	45	48	K43	-150939.379	-55207.914	1.247	1.247	358° 06' 55"	182° 22' 18"	49	K44	-150938.133	-55207.955	46	49	K44	-150938.133	-55207.955	32.944	32.946	0° 29' 13"	179° 57' 31"	50	K45	-150905.190	-55207.675	47	50	K45	-150905.190	-55207.675	13.890	13.891	0° 26' 44"	180° 44' 19"	51	K46	-150891.300	-55207.567	48	51	K46	-150891.300	-55207.567	4.258	4.258	1° 11' 03"	179° 51' 47"	52	K47	-150887.043	-55207.479																																																																																																																																																																																																																								
43	46	K41	-150975.057	-55208.227	28.055	28.057	0° 22' 33"	180° 35' 37"																																																																																																																																																																																																																																																																																																						
	47	K42	-150947.003	-55208.043					44	47	K42	-150947.003	-55208.043	7.625	7.625	0° 58' 10"	177° 08' 45"	48	K43	-150939.379	-55207.914	45	48	K43	-150939.379	-55207.914	1.247	1.247	358° 06' 55"	182° 22' 18"	49	K44	-150938.133	-55207.955	46	49	K44	-150938.133	-55207.955	32.944	32.946	0° 29' 13"	179° 57' 31"	50	K45	-150905.190	-55207.675	47	50	K45	-150905.190	-55207.675	13.890	13.891	0° 26' 44"	180° 44' 19"	51	K46	-150891.300	-55207.567	48	51	K46	-150891.300	-55207.567	4.258	4.258	1° 11' 03"	179° 51' 47"	52	K47	-150887.043	-55207.479																																																																																																																																																																																																																																					
44	47	K42	-150947.003	-55208.043	7.625	7.625	0° 58' 10"	177° 08' 45"																																																																																																																																																																																																																																																																																																						
	48	K43	-150939.379	-55207.914					45	48	K43	-150939.379	-55207.914	1.247	1.247	358° 06' 55"	182° 22' 18"	49	K44	-150938.133	-55207.955	46	49	K44	-150938.133	-55207.955	32.944	32.946	0° 29' 13"	179° 57' 31"	50	K45	-150905.190	-55207.675	47	50	K45	-150905.190	-55207.675	13.890	13.891	0° 26' 44"	180° 44' 19"	51	K46	-150891.300	-55207.567	48	51	K46	-150891.300	-55207.567	4.258	4.258	1° 11' 03"	179° 51' 47"	52	K47	-150887.043	-55207.479																																																																																																																																																																																																																																																		
45	48	K43	-150939.379	-55207.914	1.247	1.247	358° 06' 55"	182° 22' 18"																																																																																																																																																																																																																																																																																																						
	49	K44	-150938.133	-55207.955					46	49	K44	-150938.133	-55207.955	32.944	32.946	0° 29' 13"	179° 57' 31"	50	K45	-150905.190	-55207.675	47	50	K45	-150905.190	-55207.675	13.890	13.891	0° 26' 44"	180° 44' 19"	51	K46	-150891.300	-55207.567	48	51	K46	-150891.300	-55207.567	4.258	4.258	1° 11' 03"	179° 51' 47"	52	K47	-150887.043	-55207.479																																																																																																																																																																																																																																																															
46	49	K44	-150938.133	-55207.955	32.944	32.946	0° 29' 13"	179° 57' 31"																																																																																																																																																																																																																																																																																																						
	50	K45	-150905.190	-55207.675					47	50	K45	-150905.190	-55207.675	13.890	13.891	0° 26' 44"	180° 44' 19"	51	K46	-150891.300	-55207.567	48	51	K46	-150891.300	-55207.567	4.258	4.258	1° 11' 03"	179° 51' 47"	52	K47	-150887.043	-55207.479																																																																																																																																																																																																																																																																												
47	50	K45	-150905.190	-55207.675	13.890	13.891	0° 26' 44"	180° 44' 19"																																																																																																																																																																																																																																																																																																						
	51	K46	-150891.300	-55207.567					48	51	K46	-150891.300	-55207.567	4.258	4.258	1° 11' 03"	179° 51' 47"	52	K47	-150887.043	-55207.479																																																																																																																																																																																																																																																																																									
48	51	K46	-150891.300	-55207.567	4.258	4.258	1° 11' 03"	179° 51' 47"																																																																																																																																																																																																																																																																																																						
	52	K47	-150887.043	-55207.479																																																																																																																																																																																																																																																																																																										

距離・方向角の計算書

世界測地系

平成 19 年 8 月 10 日

現場名：出来形確認測量

縮尺係数 0.999938
辺の総合計 917.336

No	点番	点名	X 座標	Y 座標	平面距離	球面距離	方向角	夾角
49	52	K47	-150887.043	-55207.479				
	53	K48	-150876.867	-55207.293	10.178	10.179	1° 02' 50"	180° 44' 58"
50	53	K48	-150876.867	-55207.293				
	54	K49	-150837.147	-55206.047	39.740	39.742	1° 47' 48"	180° 02' 06"
51	54	K49	-150837.147	-55206.047				
	55	K50	-150830.142	-55205.823	7.009	7.009	1° 49' 54"	178° 12' 01"
52	55	K50	-150830.142	-55205.823				
	56	K51	-150801.338	-55205.807	28.804	28.806	0° 01' 55"	179° 28' 53"
53	56	K51	-150801.338	-55205.807				
	57	K52	-150792.156	-55205.885	9.182	9.183	359° 30' 48"	180° 08' 13"
54	57	K52	-150792.156	-55205.885				
	58	K53	-150775.777	-55205.985	16.379	16.380	359° 39' 01"	178° 26' 47"
55	58	K53	-150775.777	-55205.985				
	59	K54	-150763.590	-55206.390	12.194	12.195	358° 05' 48"	173° 28' 08"
56	59	K54	-150763.590	-55206.390				
	60	K55	-150762.221	-55206.593	1.384	1.384	351° 33' 56"	179° 01' 28"
57	60	K55	-150762.221	-55206.593				
	61	K56	-150739.250	-55210.400	23.284	23.285	350° 35' 24"	174° 46' 14"
58	61	K56	-150739.250	-55210.400				
	62	K57	-150712.563	-55217.371	27.582	27.584	345° 21' 38"	180° 00' 52"
59	62	K57	-150712.563	-55217.371				
	63	K58	-150680.595	-55225.713	33.038	33.040	345° 22' 30"	228° 39' 17"
60	63	K58	-150680.595	-55225.713				
	64	K59	-150678.501	-55224.299	2.527	2.527	34° 01' 47"	230° 04' 17"
61	64	K59	-150678.501	-55224.299				
	65	K60	-150678.000	-55219.450	4.875	4.875	84° 06' 04"	185° 15' 37"
62	65	K60	-150678.000	-55219.450				
	66	K61	-150677.960	-55215.861	3.589	3.589	89° 21' 41"	180° 44' 10"
63	66	K61	-150677.960	-55215.861				
	67	K62	-150677.983	-55202.335	13.526	13.527	90° 05' 51"	184° 21' 52"
64	67	K62	-150677.983	-55202.335				
	68	K63	-150678.626	-55194.095	8.265	8.266	94° 27' 43"	179° 51' 48"
65	68	K63	-150678.626	-55194.095				
	69	K64	-150682.582	-55141.789	52.455	52.458	94° 19' 31"	271° 11' 14"
66	69	K64	-150682.582	-55141.789				
	70	K65	-150683.069	-55141.836	0.489	0.489	185° 30' 45"	88° 29' 05"
67	70	K65	-150683.069	-55141.836				
	71	K66	-150683.622	-55133.922	7.933	7.933	93° 59' 50"	313° 54' 25"
68	71	K66	-150683.622	-55133.922				
	72	K67	-150685.306	-55135.786	2.512	2.512	227° 54' 15"	136° 22' 27"
69	72	K67	-150685.306	-55135.786				
	73	K68	-150700.545	-55136.926	15.282	15.283	184° 16' 42"	180° 02' 18"
70	73	K68	-150700.545	-55136.926				
	342	K69N	-150703.592	-55137.156	3.056	3.056	184° 19' 00"	89° 32' 29"
71	342	K69N	-150703.592	-55137.156				
	75	K70	-150705.360	-55110.939	26.277	26.279	93° 51' 29"	179° 58' 30"
72	75	K70	-150705.360	-55110.939				
	76	K71	-150707.120	-55084.670	26.328	26.330	93° 49' 59"	269° 33' 01"

距離・方向角の計算書

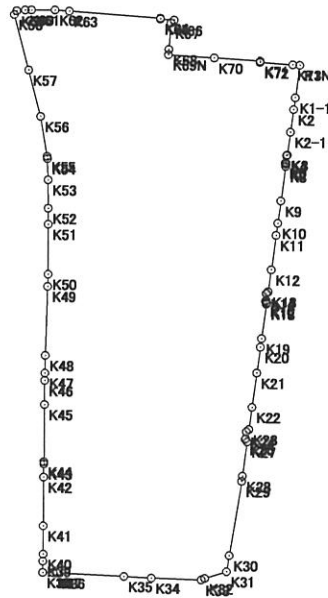
世界測地系

平成 19 年 8 月 10 日

現場名：出来形確認測量

縮尺係数 0.999938
 辺の総合計 917.336

No	点番	点名	X 座標	Y 座標	平面距離	球面距離	方向角	夾角
73	76	K71	-150707.120	-55084.670	0.796	0.796	183° 23' 00"	90° 37' 44"
	77	K72	-150707.915	-55084.717				
74	77	K72	-150707.915	-55084.717	18.723	18.724	94° 00' 44"	180° 04' 39"
	343	K73N	-150709.225	-55066.040				
75	343	K73N	-150709.225	-55066.040	4.010	4.010	94° 05' 23"	
	6	K1	-150709.511	-55062.040				



面積集計表

平成 19 年 8 月 10 日

現場名：出来形確認測量

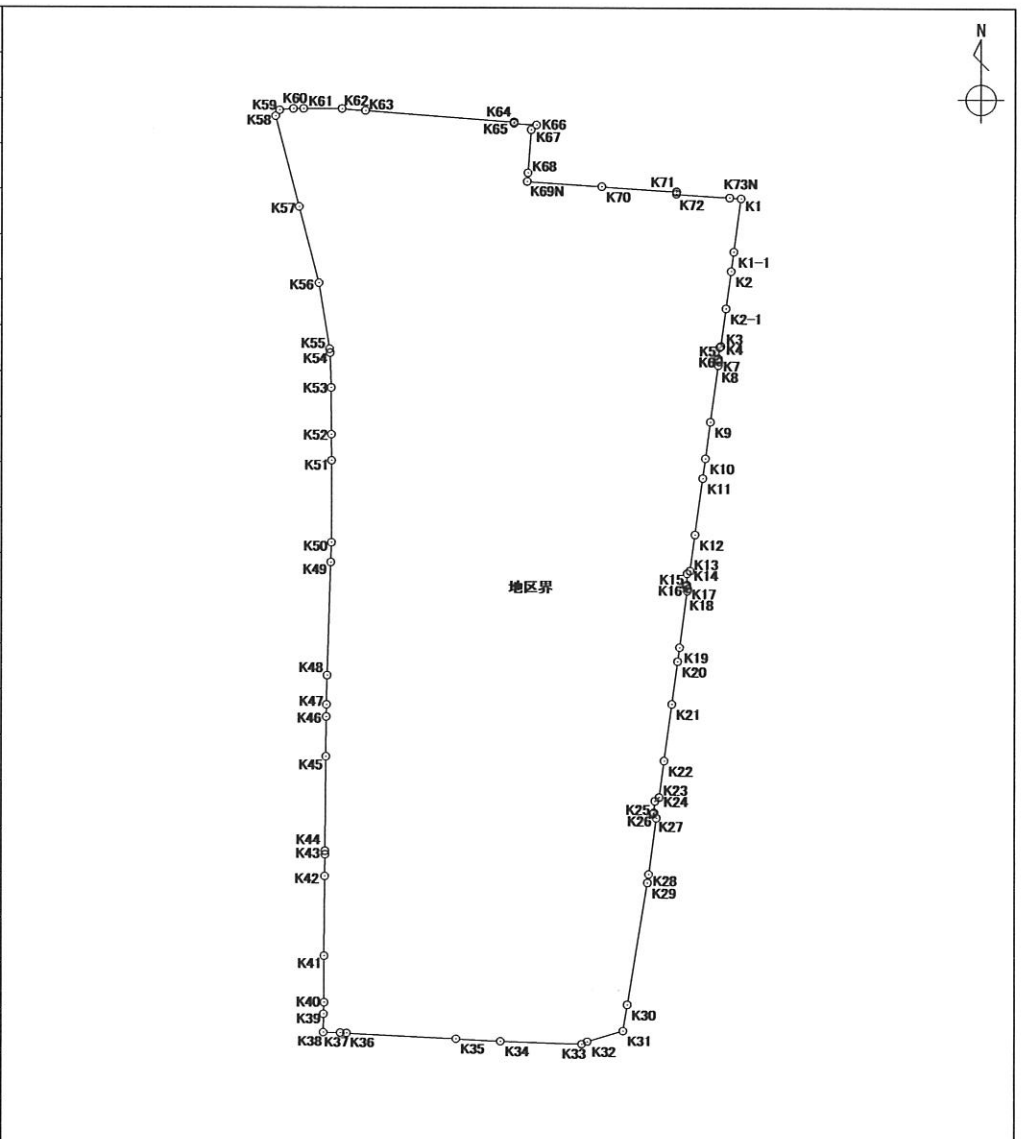
所有者	No.	地番No	地番名	面積	地積	坪数
	1	1	地区界	39797.6930890	39797.69	12038.80

合計			1筆	39797.6930890	39797.69	12038.80
----	--	--	----	---------------	----------	----------

座標面積計算書

地番	地区界	地目
----	-----	----

境界点	X座標	Y座標	辺長	方向角	備考
K1	-150709.511	-55062.040	18.863	187° 41' 00"	
K1-1	-150728.205	-55064.562	6.833	187° 47' 19"	
K2	-150734.975	-55065.488	13.158	187° 47' 00"	
K2-1	-150748.012	-55067.270	13.226	187° 39' 06"	
K3	-150761.120	-55069.031	0.613	225° 51' 33"	
K4	-150761.547	-55069.471	3.860	186° 44' 25"	
K5	-150765.380	-55069.924	0.555	211° 36' 03"	
K6	-150765.853	-55070.215	0.790	144° 07' 00"	
K7	-150766.493	-55069.752	1.359	187° 39' 11"	
K8	-150767.840	-55069.933	19.991	187° 50' 45"	
K9	-150787.644	-55072.662	12.950	187° 41' 09"	
K10	-150800.478	-55074.394	7.035	187° 40' 43"	
K11	-150807.450	-55075.334	19.997	187° 43' 51"	
K12	-150827.265	-55078.024	12.821	187° 42' 51"	
K13	-150839.970	-55079.745	1.389	227° 58' 34"	
K14	-150840.900	-55080.777	4.020	181° 05' 00"	
K15	-150844.919	-55080.853	0.560	210° 49' 24"	
K16	-150845.400	-55081.140	1.018	147° 45' 43"	
K17	-150846.261	-55080.597	0.827	187° 42' 33"	
K18	-150847.081	-55080.708	20.004	187° 41' 36"	
K19	-150866.905	-55083.386	4.977	187° 42' 07"	
K20	-150871.837	-55084.053	15.027	187° 42' 23"	
K21	-150886.728	-55086.068	19.996	187° 42' 50"	
K22	-150906.543	-55088.752	12.881	187° 44' 11"	

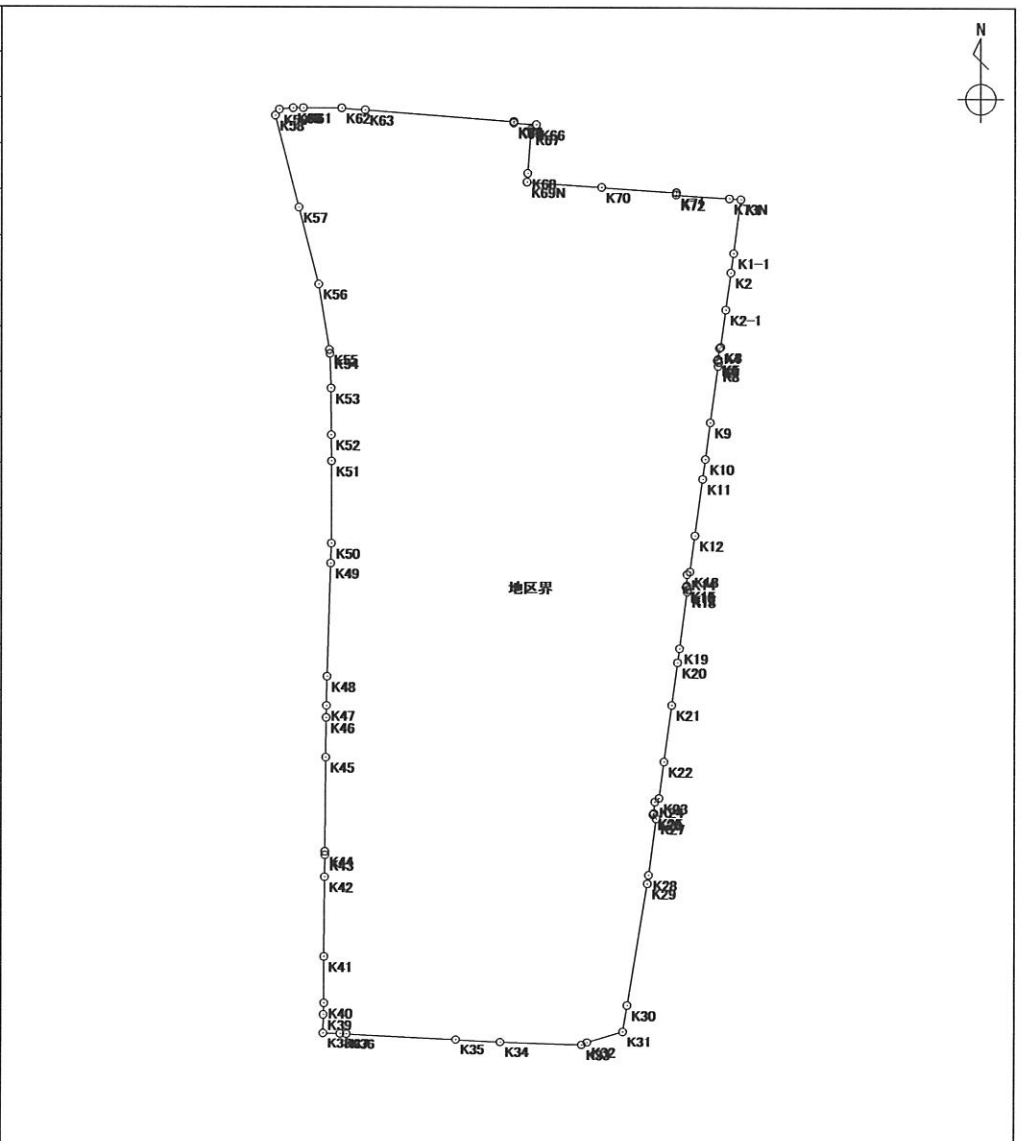


面積算出公式	面積	土地の所在
$A = \frac{1}{2} \sum X_n \times (Y_{n+1} - Y_{n-1})$	地積	土地の所有者

座標面積計算書

地番	地区界	地目
----	-----	----

境界点	X座標	Y座標	辺長	方向角	備考
K23	-150919.307	-55090.486	1.932	228° 30' 16"	
K24	-150920.587	-55091.933	3.992	185° 00' 54"	
K25	-150924.564	-55092.282	0.518	211° 49' 04"	
K26	-150925.004	-55092.555	1.820	142° 54' 13"	
K27	-150926.456	-55091.457	19.897	187° 40' 16"	
K28	-150946.175	-55094.113	3.020	187° 47' 02"	
K29	-150949.167	-55094.522	43.383	189° 22' 01"	
K30	-150991.972	-55101.583	9.381	189° 09' 51"	
K31	-151001.233	-55103.077	13.138	252° 46' 23"	
K32	-151005.124	-55115.626	2.118	244° 35' 04"	
K33	-151006.033	-55117.539	28.618	271° 56' 33"	
K34	-151005.063	-55146.141	15.660	273° 17' 01"	
K35	-151004.166	-55161.775	38.586	272° 58' 32"	
K36	-151002.163	-55200.309	2.207	273° 10' 06"	
K37	-151002.041	-55202.513	5.968	271° 17' 12"	
K38	-151001.907	-55208.479	6.518	0° 32' 42"	
K39	-150995.389	-55208.417	4.044	2° 45' 00"	
K40	-150991.350	-55208.223	16.293	359° 59' 09"	
K41	-150975.057	-55208.227	28.055	0° 22' 33"	
K42	-150947.003	-55208.043	7.625	0° 58' 10"	
K43	-150939.379	-55207.914	1.247	358° 06' 55"	
K44	-150938.133	-55207.955	32.944	0° 29' 13"	
K45	-150905.190	-55207.675	13.890	0° 26' 44"	
K46	-150891.300	-55207.567	4.258	1° 11' 03"	

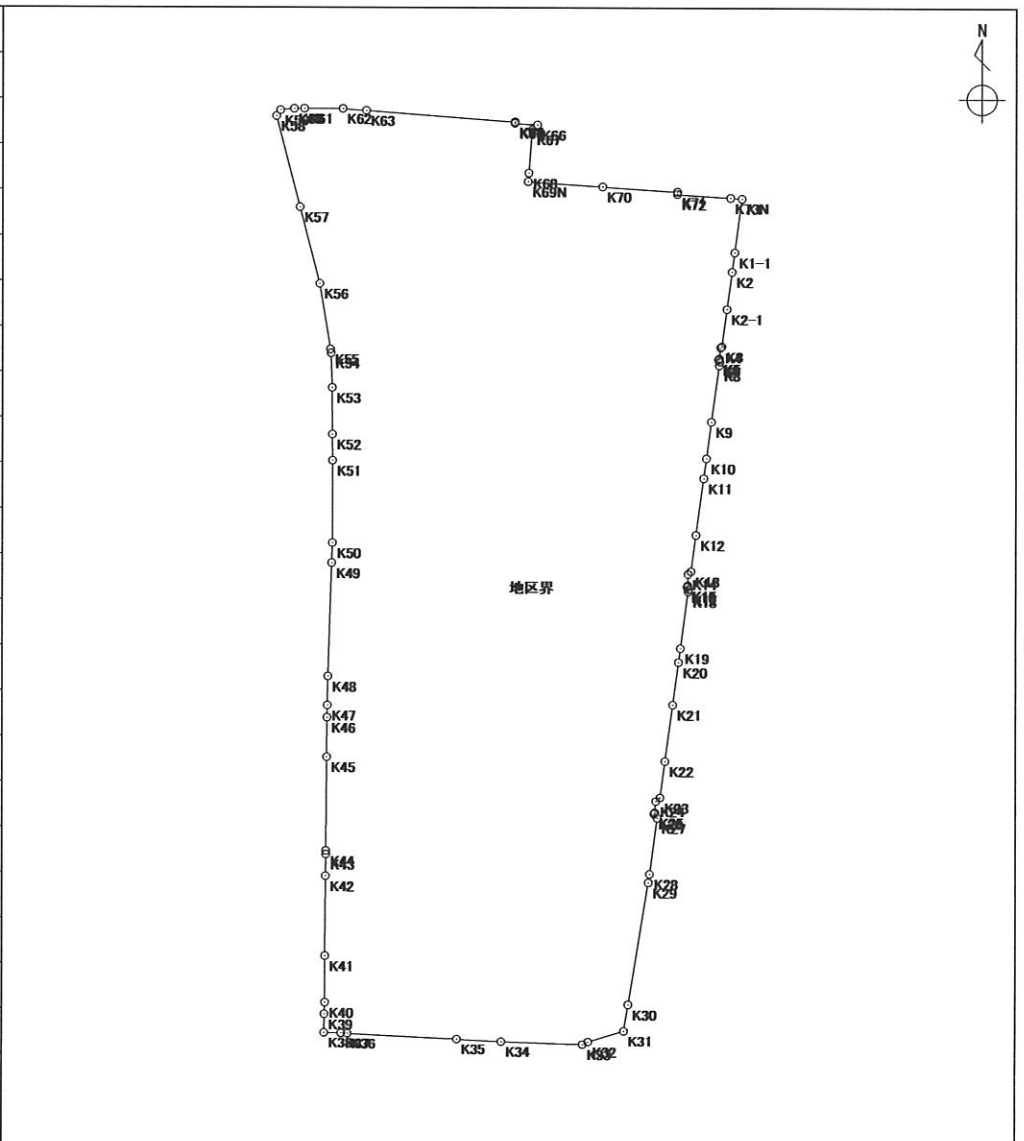


面積算出公式	面積	土地の所在
$A = \frac{1}{2} \sum X_n \times (Y_{n+1} - Y_{n-1})$	地積	土地の所有者

座標面積計算書

地番	地区界	地目
----	-----	----

境界点	X座標	Y座標	辺長	方向角	備考
K47	-150887.043	-55207.479	10.178	1° 02' 50"	
K48	-150876.867	-55207.293	39.740	1° 47' 48"	
K49	-150837.147	-55206.047	7.009	1° 49' 54"	
K50	-150830.142	-55205.823	28.804	0° 01' 55"	
K51	-150801.338	-55205.807	9.182	359° 30' 48"	
K52	-150792.156	-55205.885	16.379	359° 39' 01"	
K53	-150775.777	-55205.985	12.194	358° 05' 48"	
K54	-150763.590	-55206.390	1.384	351° 33' 56"	
K55	-150762.221	-55206.593	23.284	350° 35' 24"	
K56	-150739.250	-55210.400	27.582	345° 21' 38"	
K57	-150712.563	-55217.371	33.038	345° 22' 30"	
K58	-150680.595	-55225.713	2.527	34° 01' 47"	
K59	-150678.501	-55224.299	4.875	84° 06' 04"	
K60	-150678.000	-55219.450	3.589	89° 21' 41"	
K61	-150677.960	-55215.861	13.526	90° 05' 51"	
K62	-150677.983	-55202.335	8.265	94° 27' 43"	
K63	-150678.626	-55194.095	52.455	94° 19' 31"	
K64	-150682.582	-55141.789	0.489	185° 30' 45"	
K65	-150683.069	-55141.836	7.933	93° 59' 50"	
K66	-150683.622	-55133.922	2.512	227° 54' 15"	
K67	-150685.306	-55135.786	15.282	184° 16' 42"	
K68	-150700.545	-55136.926	3.056	184° 19' 00"	
K69N	-150703.592	-55137.156	26.277	93° 51' 29"	
K70	-150705.360	-55110.939	26.328	93° 49' 59"	



面積算出公式	面積	土地の所在
$A = \frac{1}{2} \sum X_n \times (Y_{n+1} - Y_{n-1})$	地積	土地の所有者

街区出来形精度管理表

作業名	清音上中島土地区画整理事業	地区	総社市清音上中島地区	計画機関	清音上中島土地区画整理組合	作業機関	株式会社サンワコン	点検者	
路線名	地区界	期間	自至	作業量	3.9ha	主任技術者		その他	

測点	水平位置 (距離)				摘要	測点	水平位置 (距離)				摘要				
	計算値	測定値	較差	制限			計算値	測定値	較差	制限					
K1	~K1-1	18.863	18.859	0.004	0.010	平地	10mm	K21	~K22	19.996	19.994	0.002	0.010	平地	10mm
K1-1	~K2	6.833	6.832	0.001	0.010	"	"	K22	~K23	12.881	12.877	0.004	0.010	"	"
K2	~K2-1	13.158	13.154	0.004	0.010	"	"	K23	~K24	1.932	1.940	0.008	0.010	"	"
K2-1	~K3	13.226	13.224	0.002	0.010	"	"	K24	~K25	3.992	3.987	0.005	0.010	"	"
K3	~K4	0.613	0.619	0.006	0.010	"	"	K25	~K26	0.518	0.516	0.002	0.010	"	"
K4	~K5	3.860	3.858	0.002	0.010	"	"	K26	~K27	1.820	1.812	0.008	0.010	"	"
K5	~K6	0.555	0.558	0.003	0.010	"	"	K27	~K28	19.897	19.898	0.001	0.010	"	"
K6	~K7	0.790	0.787	0.003	0.010	"	"	K28	~K29	3.020	3.018	0.002	0.010	"	"
K7	~K8	1.359	1.357	0.002	0.010	"	"	K29	~K30	43.383	43.389	0.006	0.014	平地	S/3000
K8	~K9	19.991	19.984	0.007	0.010	"	"	K30	~K31	9.381	9.378	0.003	0.010	平地	10mm
K9	~K10	12.950	12.952	0.002	0.010	"	"	K31	~K32	13.138	13.138	0.000	0.010	"	"
K10	~K11	7.035	7.034	0.001	0.010	"	"	K32	~K33	2.118	2.121	0.003	0.010	"	"
K11	~K12	19.997	19.991	0.006	0.010	"	"	K33	~K34	28.618	28.618	0.000	0.010	"	"
K12	~K13	12.821	12.819	0.002	0.010	"	"	K34	~K35	15.660	15.666	0.006	0.010	"	"
K13	~K14	1.389	1.391	0.002	0.010	"	"	K35	~K36	38.586	38.583	0.003	0.012	平地	S/3000
K14	~K15	4.020	4.020	0.000	0.010	"	"	K36	~K37	2.207	2.205	0.002	0.010	平地	10mm
K15	~K16	0.560	0.561	0.001	0.010	"	"	K37	~K38	5.968	5.973	0.005	0.010	"	"
K16	~K17	1.018	1.011	0.007	0.010	"	"	K38	~K39	6.518	6.520	0.002	0.010	"	"
K17	~K18	0.827	0.825	0.002	0.010	"	"	K39	~K40	4.044	4.046	0.002	0.010	"	"
K18	~K19	20.004	20.005	0.001	0.010	"	"	K40	~K41	16.293	16.285	0.008	0.010	"	"
K19	~K20	4.977	4.976	0.001	0.010	"	"	K41	~K42	28.055	28.055	0.000	0.010	"	"
K20	~K21	15.027	15.028	0.001	0.010	"	"	K42	~K43	7.625	7.626	0.001	0.010	"	"

街区出来形精度管理表

作業名	清音上中島土地区画整理事業	地区	総社市清音上中島地区	計画機関	清音上中島土地区画整理組合	作業機関	株式会社サンワコン	点検者	
路線名	地区界	期間	自至	作業量	3.9ha	主任技術者		その他	

測点	水平位置 (距離)				摘要	測点	水平位置 (距離)				摘要
	計算値	測定値	較差	制限			計算値	測定値	較差	制限	
K43 ~ K44	1.247	1.247	0.000	0.010	平地 10mm	K65 ~ K66	7.933	7.925	0.008	0.010	平地 10mm
K44 ~ K45	32.944	32.951	0.007	0.010	平地 S/3000	K66 ~ K67	2.512	2.513	0.001	0.010	" "
K45 ~ K46	13.890	13.886	0.004	0.010	平地 10mm	K67 ~ K68	15.282	15.286	0.004	0.010	" "
K46 ~ K47	4.258	4.260	0.002	0.010	" "	K68 ~ K69N	3.056	3.050	0.006	0.010	" "
K47 ~ K48	10.178	10.179	0.001	0.010	" "	K69N ~ K70	26.277	26.273	0.004	0.010	" "
K48 ~ K49	39.740	39.739	0.001	0.013	平地 S/3000	K70 ~ K71	26.328	26.327	0.001	0.010	" "
K49 ~ K50	7.009	7.006	0.003	0.010	平地 10mm	K71 ~ K72	0.796	0.801	0.005	0.010	" "
K50 ~ K51	28.804	28.802	0.002	0.010	" "	K72 ~ K73N	18.723	18.725	0.002	0.010	" "
K51 ~ K52	9.182	9.182	0.000	0.010	" "	K73N ~ K1	4.010	4.009	0.001	0.010	" "
K52 ~ K53	16.379	16.378	0.001	0.010	" "						
K53 ~ K54	12.194	12.193	0.001	0.010	" "						
K54 ~ K55	1.384	1.385	0.001	0.010	" "						
K55 ~ K56	23.284	23.278	0.006	0.010	" "						
K56 ~ K57	27.582	27.586	0.004	0.010	" "						
K57 ~ K58	33.038	33.038	0.000	0.011	平地 S/3000						
K58 ~ K59	2.527	2.521	0.006	0.010	平地 10mm						
K59 ~ K60	4.875	4.874	0.001	0.010	" "						
K60 ~ K61	3.589	3.588	0.001	0.010	" "						
K61 ~ K62	13.526	13.522	0.004	0.010	" "						
K62 ~ K63	8.265	8.259	0.006	0.010	" "						
K63 ~ K64	52.455	52.459	0.004	0.017	平地 S/3000						
K64 ~ K65	0.489	0.492	0.003	0.010	平地 10mm						