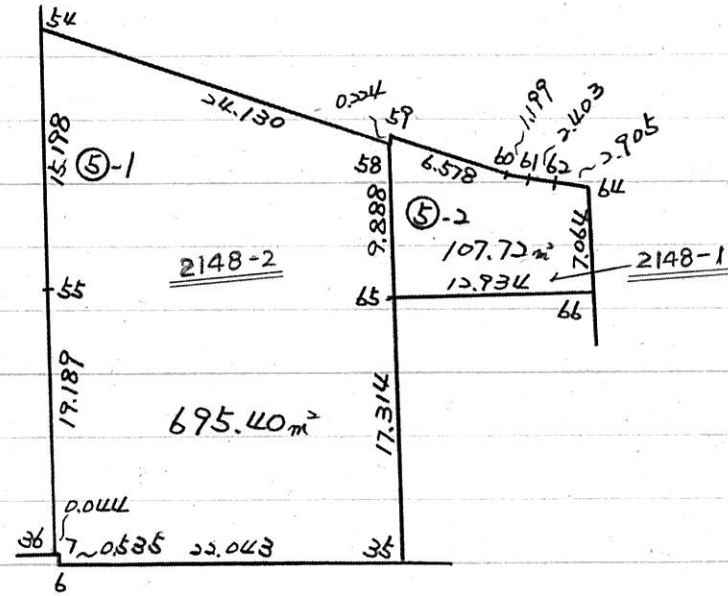


23 ブロック



H.6.12.19

* * * * 5-1 LOT

面積計算書 * * * * NO 1

点名	X	DX	DMD.1	Y	DY	DMD.2	方向角	距離	DX*DMD.2	DY*DMD.1
23-35	- 146697.854			- 52955.262						
23-6	- 146701.478	+ 3.624	+ 3.624	- 52977.005	+ 21.743	+ 21.743	260-32-14	22.043	+ 78.796632	+ 78.796632
23-7	- 146700.950	- 0.528	+ 6.720	- 52977.091	+ 0.086	+ 43.572	350-44-56	0.535	+ 23.006016	+ 0.577920
23-36	- 146700.957	+ 0.007	+ 6.199	- 52977.134	+ 0.043	+ 43.701	260-45-14	0.044	+ 0.305907	+ 0.266557
23-55	- 146682.149	- 18.808	- 12.602	- 52980.939	+ 3.805	+ 47.549	348-33-47	19.189	- 894.301592	- 47.950610
23-54	- 146667.253	- 14.896	- 46.306	- 52983.954	+ 3.015	+ 54.369	348-33-28	15.198	- 809.880624	- 139.612590
23-58	- 146671.092	+ 3.839	- 57.363	- 52960.131	- 23.823	+ 33.561	99- 9-16	24.130	+ 128.840679	+ 1366.558749
23-65	- 146680.808	+ 9.716	- 43.808	- 52958.294	- 1.837	+ 7.901	169-17-37	9.888	+ 76.766116	+ 80.475296
23-35	- 146697.854	+ 17.046	- 17.046	- 52955.262	- 3.032	+ 3.032	169-54-51	17.314	+ 51.683472	+ 51.683472
		+ 34.232			+ 28.692				+ 336.392806	+ 1578.358626
		- 34.232			- 28.692				- 1727.188232	- 187.563200
									- 1390.795426	+ 1390.795426

面積 = ~~695.397713~~

695.40 分筆による調整

* * * * 5-2 LOT

面積計算書 * * * * NO 1

点名	X	DX	DMD.1	Y	DY	DMD.2	方向角	距離	DX*DMD.2	DY*DMD.1
23-58	- 146671.092			- 52960.131						
23-59	- 146670.870	- 0.222	- 0.222	- 52960.101	- 0.030	- 0.030	7-41-46	0.224 +	0.006660 +	0.006660
23-60	- 146671.617	+ 0.747	+ 0.303	- 52953.566	- 6.535	- 6.595	96-31-16	6.578 -	4.926465 -	1.980105
23-61	- 146671.684	+ 0.067	+ 1.117	- 52952.369	- 1.197	- 14.327	93-12-13	1.199 -	0.959909 -	1.337049
23-62	- 146671.763	+ 0.079	+ 1.263	- 52949.967	- 2.402	- 17.926	91-53- 1	2.403 -	1.416154 -	3.033726
23-64	- 146671.755	- 0.008	+ 1.334	- 52947.062	- 2.905	- 23.233	89-50-32	2.905 +	0.185864 -	3.875270
23-66	- 146678.653	+ 6.898	+ 8.224	- 52945.541	- 1.521	- 27.659	167-33-55	7.064 -	190.791782 -	12.508704
23-65	- 146680.808	+ 2.155	+ 17.277	- 52958.294	+ 12.753	- 16.427	260-24-32	12.934 -	35.400185 +	220.333581
23-58	- 146671.092	- 9.716	+ 9.716	- 52960.131	+ 1.837	- 1.837	349-17-37	9.888 +	17.848292 +	17.848292
		+ 9.946			+ 14.590				18.040816 +	238.188533
		- 9.946			- 14.590				- 233.494495 -	22.734854
									- 215.453679 +	215.453679

面積 = 107.726839

* * * 突出し計算書 * * *

NO.	1		2		3
視準点名	T18		T18		T18
観測点名	T18-1		T18-1		T18-1
求点名	23-40		23-41		23-42
	方向角 1	79-24-27		79-24-27	
	観測角	177- 3-30		164-16-40	
	方向角 2	256-27-57		243-41- 7	
距離	13.184		11.834		8.327
COS & SIN	- 0.234025	- 0.972231	- 0.443302	- 0.896373	- 0.899617
X 1 . Y 1 =	-146675.917	- 53052.456	-146675.917	- 53052.456	-146675.917
DX . DY =	- 3.085	- 12.818	- 5.246	- 10.608	- 7.491
X 2 . Y 2 =	-146679.002	- 53065.274	-146681.163	- 53063.064	-146683.408

NO.	4		5		6
視準点名	T18		T18		T18
観測点名	T18-1		T18-1		T18-1
求点名	23-43		23-44		23-45
	方向角 1	79-24-27		79-24-27	
	観測角	92-43-25		85-31-30	
	方向角 2	172- 7-52		164-55-57	
距離	9.736		11.045		12.083
COS & SIN	- 0.990584	+ 0.136907	- 0.965620	+ 0.259957	- 0.957867
X 1 . Y 1 =	-146675.917	- 53052.456	-146675.917	- 53052.456	-146675.917
DX . DY =	- 9.644	+ 1.333	- 10.665	+ 2.871	- 11.574
X 2 . Y 2 =	-146685.561	- 53051.123	-146686.582	- 53049.585	-146687.491

NO.	7		8		9
視準点名	T34		T61		T37
観測点名	T61		T34		T62
求点名	23-47		23-49		23-55
	方向角 1	255-59- 3		75-59- 3	
	観測角	37-16-35		300-48-25	
	方向角 2	293-15-38		16-47-28	
距離	25.885		19.577		23.779
COS & SIN	+ 0.394913	- 0.918718	+ 0.957364	+ 0.288883	+ 0.983381
X 1 . Y 1 =	-146709.177	- 53023.013	-146720.174	- 53067.069	-146705.533
DX . DY =	+ 10.222	- 23.781	+ 18.742	+ 5.655	+ 23.384
X 2 . Y 2 =	-146698.955	- 53046.794	-146701.432	- 53061.414	-146682.149

* * * * * 突出し計算書 * * * * *

NO.		10		11		12
視準点名	T18			T18		T18
観測点名	T17	方向角 1	260-32-31	T17	260-32-31	T17
求点名	23-58	観測角	215-25-15	23-59	214-46-50	23-60
		方向角 2	115-57-46		115-19-21	
距離			19.091		19.022	
COS & SIN	-		0.437787	-	0.427713	-
			+ 0.899079		+ 0.903915	
X 1 . Y 1 =	-146662.734	-	52977.295	-146662.734	-	52977.295
DX . DY =	-	8.358	+ 17.164	-	8.136	+ 17.194
X 2 . Y 2 =	-146671.092	-	52960.131	-146670.870	-	52960.101
						-146671.617
						- 52953.566

NO.		13		14		15
視準点名	T18			T18		T37
観測点名	T17	方向角 1	260-32-31	T17	260-32-31	A11
求点名	23-61	観測角	209-12-30	23-62	207-44-30	23-64
		方向角 2	109-45- 1		108-17- 1	
距離			26.484		28.781	
COS & SIN	-		0.337921	-	0.313721	-
			+ 0.941174		+ 0.949515	
X 1 . Y 1 =	-146662.734	-	52977.295	-146662.734	-	52977.295
DX . DY =	-	8.950	+ 24.926	-	9.029	+ 27.328
X 2 . Y 2 =	-146671.684	-	52952.369	-146671.763	-	52949.967
						-146655.479
						- 52924.506
						- 16.276
						- 22.556
						-146671.755
						- 52947.062

NO.		16		17		18
視準点名	T62			A11		A11
観測点名	T37-1	方向角 1	253-24- 8	T37	19-51-46	T37
求点名	23-65	観測角	97-26-50	23-66	315-39-50	23-68
		方向角 2	350-50-58		335-31-36	
距離			18.616		17.042	
COS & SIN	+		0.987274	+	0.910154	+
			- 0.159029		- 0.414270	
X 1 . Y 1 =	-146699.187	-	52955.334	-146694.164	-	52938.481
DX . DY =	+	18.379	- 2.960	+	15.511	- 7.060
X 2 . Y 2 =	-146680.808	-	52958.294	-146678.653	-	52945.541
						-146678.575
						- 52945.047

* * * 突出し計算書 * * *

NO.	19		20	
視準点名	A11		23-13	
観測点名	T37	方向角 1		170-30-27
求点名	23-69	観測角	23-49	180- 0- 0
		方向角 2	23-48	350-30-27
距離	14.585		0.691	
COS & SIN	+ 0.909682	- 0.415306	+ 0.986307	- 0.164918
X 1 . Y 1 =	-146694.164	- 52938.481	-146701.432	- 53061.414
DX . DY =	+ 13.268	- 6.057	+ 0.682	- 0.114
X 2 . Y 2 =	-146680.896	- 52944.538	-146700.750	- 53061.528

* * * 線上計算書 * * * (T18) - (A12) NO 1

方向角 = 259-24-27 COS= -0.183823 SIN= -0.982959 修正率 = 0.9998670

点名	観測距離	修正距離	D X	X 配布	D Y	Y 配布	X	Y
T18							-14.6669.849	- 53020.006
T18-1	33.017	33.013	- 6.069	+ 1	- 32.450	+ 0	-14.6675.917	- 53052.456
A12	27.121	27.117	- 4.985	+ 0	- 26.655	+ 0	-14.6680.902	- 53079.111
合計 =	60.138	60.130	- 11.054	+ 1	- 59.105	+ 0	- 11.053	- 59.105

* * * 線上計算書 * * * (T37) - (T62) NO 2

方向角 = 253-24- 8 COS= -0.285651 SIN= -0.958334 修正率 = 1.0000503

点名	観測距離	修正距離	D X	X 配布	D Y	Y 配布	X	Y
T37							-14.6694.164	- 52938.481
T37-1	17.585	17.586	- 5.023	+ 0	- 16.853	+ 0	-14.6699.187	- 52955.334
T62	22.212	22.213	- 6.345	- 1	- 21.287	- 1	-14.6705.533	- 52976.622
合計 =	39.797	39.799	- 11.368	- 1	- 38.140	- 1	- 11.369	- 38.141

* * * 線上計算書 * * * (23-16) - (23-2) NO 3

方向角 = 80-29- 5 COS= +0.165311 SIN= +0.986242 修正率 = 0.9998483

点名	観測距離	修正距離	D X	X 配布	D Y	Y 配布	X	Y
23-16							-14.6678.854	- 53070.472
23-25	4.901	4.900	+ 0.810	+ 0	+ 4.833	+ 0	-14.6678.044	- 53065.639
23-2	14.871	14.869	+ 2.458	+ 0	+ 14.664	+ 0	-14.6675.586	- 53050.975
合計 =	19.772	19.769	+ 3.268	+ 0	+ 19.497	+ 0	+ 3.268	+ 19.497

* * * 線上計算書 * * * (23-2) - (23-17) NO 4

方向角 = 80-31-15 COS= +0.164689 SIN= +0.986346 修正率 = 1.0000265

点名	観測距離	修正距離	D X	X 配布	D Y	Y 配布	X	Y
23-2							-14.6675.586	- 53050.975
23-26	22.808	22.809	+ 3.756	+ 0	+ 22.498	+ 0	-14.6671.830	- 53028.477
23-27	9.713	9.713	+ 1.600	+ 0	+ 9.580	+ 0	-14.6670.230	- 53018.897
23-28	24.244	24.245	+ 3.993	+ 0	+ 23.914	- 1	-14.6666.237	- 52994.984
23-29	10.616	10.616	+ 1.748	+ 0	+ 10.471	+ 0	-14.6664.489	- 52984.513
23-30	0.508	0.508	+ 0.084	+ 0	+ 0.501	+ 0	-14.6664.405	- 52984.012
23-70	22.517	22.517	+ 3.708	+ 0	+ 22.210	+ 0	-14.6660.697	- 52961.802

23-31	12.028	12.029	+	1.981	+	0	+	11.865	+	0	-146658.716	-	52949.937	
23-17	10.575	10.575	+	1.742	+	0	+	10.431	+	0	-146656.974	-	52939.506	
合計 =	113.009	113.012	+	18.612	+	0	+	111.470	-	1	+	18.612	+	111.469

* * * 線上計算書 * * * (23-18) - (23-19) NO 5

方向角 = 181-44-32 COS= -0.999538 SIN= -0.030403 修正率 = 0.9995901

点名	観測距離	修正距離		D X	X 配布	D Y	Y 配布	X	Y					
23-18								-146658.957	- 52937.242					
23-32	11.235	11.230	-	11.225	+	0	-	0.341	+	0	-146670.182	-	52937.583	
23-34	9.698	9.694	-	9.690	+	1	-	0.295	+	0	-146679.871	-	52937.878	
23-19	13.223	13.218	-	13.212	+	0	-	0.402	+	0	-146693.083	-	52938.280	
合計 =	34.156	34.142	-	34.127	+	1	-	1.038	+	0	-	34.126	-	1.038

* * * 線上計算書 * * * (23-5) - (23-6) NO 6

方向角 = 260-32-11 COS= -0.164421 SIN= -0.986390 修正率 = 1.0004482

点名	観測距離	修正距離		D X	X 配布	D Y	Y 配布	X	Y					
23-5								-146695.606	- 52941.778					
23-35	13.664	13.670	-	2.248	+	0	-	13.484	+	0	-146697.854	-	52955.262	
23-6	22.033	22.043	-	3.624	+	0	-	21.743	+	0	-146701.478	-	52977.005	
合計 =	35.697	35.713	-	5.872	+	0	-	35.227	+	0	-	5.872	-	35.227

* * * 線上計算書 * * * (23-7) - (23-8) NO 7

方向角 = 260-32-55 COS= -0.164211 SIN= -0.986425 修正率 = 1.0000354

点名	観測距離	修正距離		D X	X 配布	D Y	Y 配布	X	Y					
23-7								-146700.950	- 52977.091					
23-36	0.044	0.044	-	0.007	+	0	-	0.043	+	0	-146700.957	-	52977.134	
23-8	28.175	28.176	-	4.627	+	0	-	27.794	+	0	-146705.584	-	53004.928	
合計 =	28.219	28.220	-	4.634	+	0	-	27.837	+	0	-	4.634	-	27.837

* * * 線上計算書 * * * (23-8) - (23-9) NO 8

方向角 = 260-30-29 COS= -0.164909 SIN= -0.986309 修正率 = 0.9999412

点名	観測距離	修正距離		D X	X 配布	D Y	Y 配布	X	Y				
23-8								-146705.584	- 53004.928				
23-37	7.949	7.949	-	1.311	+	0	-	7.840	+	0	-146706.895	-	53012.768

23-9 26.054 26.052 - 4.296 + 0 - 25.695 + 0 -146711.191 - 53038.463
 合計 = 34.003 34.001 - 5.607 + 0 - 33.535 + 0 - 5.607 - 33.535

* * * 線上計算書 * * * (23-11) - (23-12) NO 9

方向角 = 260-24-13 COS= -0.166707 SIN= -0.986007 修正率 = 0.9997350

点名	観測距離	修正距離	D X	X 配布	D Y	Y 配布	X	Y
23-11							-146712.757	- 53044.220
23-38	14.058	14.054	- 2.343	+ 0	- 13.857	- 1	-146715.100	- 53058.078
23-12	1.038	1.038	- 0.173	+ 0	- 1.023	+ 0	-146715.273	- 53059.101
合計 =	15.096	15.092	- 2.516	+ 0	- 14.880	- 1	- 2.516	- 14.881

* * * 線上計算書 * * * (23-23) - (23-24) NO 10

方向角 = 350-31-15 COS= +0.986346 SIN= -0.164689 修正率 = 1.0000000

点名	観測距離	修正距離	D X	X 配布	D Y	Y 配布	X	Y
23-23							-146715.063	- 53065.089
23-39	13.503	13.503	+ 13.319	+ 0	- 2.224	+ 0	-146701.744	- 53067.313
23-24	22.499	22.499	+ 22.192	- 1	- 3.705	+ 0	-146679.553	- 53071.018
合計 =	36.002	36.002	+ 35.511	- 1	- 5.929	+ 0	+ 35.510	- 5.929

* * * 線上計算書 * * * (23-45) - (23-47) NO 11

方向角 = 169-10-31 COS= -0.982206 SIN= +0.187805 修正率 = 0.9993151

点名	観測距離	修正距離	D X	X 配布	D Y	Y 配布	X	Y
23-45							-146687.491	- 53048.986
23-46	6.945	6.940	- 6.817	+ 1	+ 1.303	+ 0	-146694.307	- 53047.683
23-47	4.735	4.732	- 4.648	+ 0	+ 0.889	+ 0	-146698.955	- 53046.794
合計 =	11.680	11.672	- 11.465	+ 1	+ 2.192	+ 0	- 11.464	+ 2.192

* * * 線上計算書 * * * (23-47) - (23-49) NO 12

方向角 = 260-23- 2 COS= -0.167046 SIN= -0.985949 修正率 = 0.9995281

点名	観測距離	修正距離	D X	X 配布	D Y	Y 配布	X	Y
23-47							-146698.955	- 53046.794
23-50	13.817	13.810	- 2.307	+ 0	- 13.616	+ 0	-146701.262	- 53060.410
23-49	1.018	1.018	- 0.170	+ 0	- 1.004	+ 0	-146701.432	- 53061.414

合計 = 14.835 14.828 - 2.477 + 0 - 14.620 + 0 - 2.477 - 14.620

* * * 線上計算書 * * * (23-29) - (23-55) NO 13

方向角 = 168-33-33 COS= -0.980130 SIN= +0.198356 修正率 = 0.9996671

点名	観測距離	修正距離	D X	X 配布	D Y	Y 配布	X	Y
23-29							-146664.489	- 52984.513
23-54	2.821	2.820	- 2.764	+ 0	+ 0.559	+ 0	-146667.253	- 52983.954
23-55	15.203	15.198	- 14.896	+ 0	+ 3.015	+ 0	-146682.149	- 52980.939
合計 =	18.024	18.018	- 17.660	+ 0	+ 3.574	+ 0	- 17.660	+ 3.574

* * * 線上計算書 * * * (23-36) - (23-55) NO 14

方向角 = 348-33-47 COS= +0.980144 SIN= -0.198289 修正率 = 1.0003128

点名	観測距離	修正距離	D X	X 配布	D Y	Y 配布	X	Y
23-36							-146700.957	- 52977.134
23-56	18.187	18.193	+ 17.832	+ 0	- 3.607	- 1	-146683.125	- 52980.742
23-55	0.996	0.996	+ 0.976	+ 0	- 0.197	+ 0	-146682.149	- 52980.939
合計 =	19.183	19.189	+ 18.808	+ 0	- 3.804	- 1	+ 18.808	- 3.805

* * * 線上計算書 * * * (23-46) - (23-56) NO 15

方向角 = 80-31-0 COS= +0.164761 SIN= +0.986334 修正率 = 1.0000000

点名	観測距離	修正距離	D X	X 配布	D Y	Y 配布	X	Y
23-46							-146694.307	- 53047.683
23-51	22.647	22.647	+ 3.731	+ 0	+ 22.337	+ 0	-146690.576	- 53025.346
23-52	9.716	9.716	+ 1.601	+ 0	+ 9.583	+ 0	-146688.975	- 53015.763
23-53	24.238	24.238	+ 3.993	+ 0	+ 23.907	+ 0	-146684.982	- 52991.856
23-56	11.268	11.268	+ 1.857	+ 0	+ 11.114	+ 0	-146683.125	- 52980.742
合計 =	67.869	67.869	+ 11.182	+ 0	+ 66.941	+ 0	+ 11.182	+ 66.941

* * * 線上計算書 * * * (23-54) - (23-58) NO 16

方向角 = 99- 9-16 COS= -0.159096 SIN= +0.987263 修正率 = 0.9997928

点名	観測距離	修正距離	D X	X 配布	D Y	Y 配布	X	Y
23-54							-146667.253	- 52983.954
23-57	0.551	0.551	- 0.088	+ 0	+ 0.544	+ 0	-146667.341	- 52983.410
23-58	23.584	23.579	- 3.751	+ 0	+ 23.279	+ 0	-146671.092	- 52960.131

合計 = 24.135 24.130 - 3.839 + 0 + 23.823 + 0 - 3.839 + 23.823

* * * 線 上 計 算 書 * * * (23-62) - (23-64) N O 17

方向角 = 89-50-32 COS= +0.002754 SIN= +0.999996 修正率 = 1.0027615

点 名	観測距離	修正距離	D X	X 配布	D Y	Y 配布	X	Y
23-62							-146671.763	- 52949.967
23-63	2.200	2.206	+ 0.006	+ 0	+ 2.206	+ 0	-146671.757	- 52947.761
23-64	0.697	0.699	+ 0.002	+ 0	+ 0.699	+ 0	-146671.755	- 52947.062
合計 =	2.897	2.905	+ 0.008	+ 0	+ 2.905	+ 0	+ 0.008	+ 2.905

* * * 方 向 角 · 距 離 計 算 書 * * *

NO 1
 点名 X Y
 1 23-45 - 146687.491 - 53048.986
 2 23-47 - 146698.955 - 53046.794
 COS=- 0.982206 SIN=+ 0.187805
 A L= 169-10-31 L = 11.672

NO 2
 点名 X Y
 1 23-47 - 146698.955 - 53046.794
 2 23-49 - 146701.432 - 53061.414
 COS=- 0.167045 SIN=- 0.985949
 A L= 260-23- 2 L = 14.828

NO 3
 点名 X Y
 1 23-29 - 146664.489 - 52984.513
 2 23-55 - 146682.149 - 52980.939
 COS=- 0.980130 SIN=+ 0.198357
 A L= 168-33-33 L = 18.018

NO 4
 点名 X Y
 1 23-36 - 146700.957 - 52977.134
 2 23-55 - 146682.149 - 52980.939
 COS=+ 0.980143 SIN=- 0.198290
 A L= 348-33-47 L = 19.189

NO 5
 点名 X Y
 1 23-46 - 146694.307 - 53047.683
 2 23-56 - 146683.125 - 52980.742
 COS=+ 0.164760 SIN=+ 0.986334
 A L= 80-31- 0 L = 67.869

NO 6
 点名 X Y
 1 23-54 - 146667.253 - 52983.954
 2 23-58 - 146671.092 - 52960.131
 COS=- 0.159094 SIN=+ 0.987263
 A L= 99- 9-16 L = 24.130

NO 7
 点名 X Y
 1 23-62 - 146671.763 - 52949.967
 2 23-64 - 146671.755 - 52947.062
 COS=+ 0.002754 SIN=+ 0.999996
 A L= 89-50-32 L = 2.905

NO 8
 点名 X Y
 1 23-25 - 146678.044 - 53065.639
 2 23-40 - 146679.002 - 53065.274
 COS=- 0.934472 SIN=+ 0.356036
 A L= 159- 8-35 L = 1.025

NO 9
 点名 X Y
 1 23-40 - 146679.002 - 53065.274
 2 23-41 - 146681.163 - 53063.064
 COS=- 0.699136 SIN=+ 0.714989
 A L= 134-21-28 L = 3.091

NO 10
 点名 X Y
 1 23-41 - 146681.163 - 53063.064
 2 23-42 - 146683.408 - 53056.092
 COS=- 0.306504 SIN=+ 0.951869
 A L= 107-50-55 L = 7.325

NO 11
 点名 X Y
 1 23-42 - 146683.408 - 53056.092
 2 23-43 - 146685.561 - 53051.123
 COS=- 0.397571 SIN=+ 0.917571
 A L= 113-25-35 L = 5.415

NO 12
 点名 X Y
 1 23-43 - 146685.561 - 53051.123
 2 23-44 - 146686.582 - 53049.585
 COS=- 0.553074 SIN=+ 0.833132
 A L= 123-34-41 L = 1.846

NO 13
 点名 X Y
 1 23-44 - 146686.582 - 53049.585
 2 23-45 - 146687.491 - 53048.986
 COS=- 0.835006 SIN=+ 0.550241
 A L= 146-36-59 L = 1.089

NO 14
 点名 X Y
 1 23-2 - 146675.586 - 53050.975
 2 23-45 - 146687.491 - 53048.986
 COS=- 0.986329 SIN=+ 0.164789
 A L= 170-30-54 L = 12.070

NO 15
 点名 X Y
 1 23-26 - 146671.830 - 53028.477
 2 23-51 - 146690.576 - 53025.346
 COS=- 0.986337 SIN=+ 0.164740
 A L= 170-31- 4 L = 19.006

* * * 方 向 角 · 距 離 計 算 書 * * *

NO 16
 点名 X Y
 1 23-27 - 146670.230 - 53018.897
 2 23-52 - 146688.975 - 53015.763
 COS=- 0.986310 SIN=+ 0.164902
 A L= 170-30-30 L = 19.005

NO 17
 点名 X Y
 1 23-28 - 146666.237 - 52994.984
 2 23-53 - 146684.982 - 52991.856
 COS=- 0.986361 SIN=+ 0.164595
 A L= 170-31-35 L = 19.004

NO 18
 点名 X Y
 1 23-30 - 146664.405 - 52984.012
 2 23-57 - 146667.341 - 52983.410
 COS=- 0.979620 SIN=+ 0.200862
 A L= 168-24-45 L = 2.997

NO 19
 点名 X Y
 1 23-31 - 146658.716 - 52949.937
 2 23-63 - 146671.757 - 52947.761
 COS=- 0.986363 SIN=+ 0.164583
 A L= 170-31-37 L = 13.221

NO 20
 点名 X Y
 1 23-58 - 146671.092 - 52960.131
 2 23-59 - 146670.870 - 52960.101
 COS=+ 0.990992 SIN=+ 0.133918
 A L= 7-41-46 L = 0.224

NO 21
 点名 X Y
 1 23-59 - 146670.870 - 52960.101
 2 23-60 - 146671.617 - 52953.566
 COS=- 0.113568 SIN=+ 0.993530
 A L= 96-31-16 L = 6.578

NO 22
 点名 X Y
 1 23-60 - 146671.617 - 52953.566
 2 23-61 - 146671.684 - 52952.369
 COS=- 0.055886 SIN=+ 0.998437
 A L= 93-12-13 L = 1.199

NO 23
 点名 X Y
 1 23-61 - 146671.684 - 52952.369
 2 23-62 - 146671.763 - 52949.967
 COS=- 0.032871 SIN=+ 0.999460
 A L= 91-53- 1 L = 2.403

NO 24
 点名 X Y
 1 23-32 - 146670.182 - 52937.583
 2 23-64 - 146671.755 - 52947.062
 COS=- 0.163707 SIN=- 0.986509
 A L= 260-34-40 L = 9.609

NO 25
 点名 X Y
 1 23-34 - 146679.871 - 52937.878
 2 23-69 - 146680.896 - 52944.538
 COS=- 0.152113 SIN=- 0.988363
 A L= 261-15- 2 L = 6.738

NO 26
 点名 X Y
 1 23-69 - 146680.896 - 52944.538
 2 23-68 - 146678.575 - 52945.047
 COS=+ 0.976787 SIN=- 0.214211
 A L= 347-37-51 L = 2.376

NO 27
 点名 X Y
 1 23-68 - 146678.575 - 52945.047
 2 23-66 - 146678.653 - 52945.541
 COS=- 0.155963 SIN=- 0.987763
 A L= 261- 1-39 L = 0.500

NO 28
 点名 X Y
 1 23-66 - 146678.653 - 52945.541
 2 23-65 - 146680.808 - 52958.294
 COS=- 0.166618 SIN=- 0.986022
 A L= 260-24-32 L = 12.934

NO 29
 点名 X Y
 1 23-5 - 146695.606 - 52941.778
 2 23-66 - 146678.653 - 52945.541
 COS=+ 0.976240 SIN=- 0.216693
 A L= 347-29- 7 L = 17.366

NO 30
 点名 X Y
 1 23-66 - 146678.653 - 52945.541
 2 23-64 - 146671.755 - 52947.062
 COS=+ 0.976542 SIN=- 0.215326
 A L= 347-33-55 L = 7.064

* * * 方 向 角 · 距 離 計 算 書 * * *

NO 31
 点名 X Y
 1 23-35 - 146697.854 - 52955.262
 2 23-65 - 146680.808 - 52958.294
 COS=+ 0.984547 SIN=- 0.175123
 AL= 349-54-51 L = 17.314

NO 32
 点名 X Y
 1 23-37 - 146706.895 - 53012.768
 2 23-52 - 146688.975 - 53015.763
 COS=+ 0.986319 SIN=- 0.164845
 AL= 350-30-42 L = 18.169

NO 33
 点名 X Y
 1 23-10 - 146712.204 - 53044.319
 2 23-47 - 146698.955 - 53046.794
 COS=+ 0.982995 SIN=- 0.183630
 AL= 349-25- 7 L = 13.478

NO 34
 点名 X Y
 1 23-38 - 146715.100 - 53058.078
 2 23-50 - 146701.262 - 53060.410
 COS=+ 0.986096 SIN=- 0.166178
 AL= 350-26- 4 L = 14.033

NO 35
 点名 X Y
 1 23-13 - 146714.685 - 53059.198
 2 23-49 - 146701.432 - 53061.414
 COS=+ 0.986307 SIN=- 0.164918
 AL= 350-30-27 L = 13.437

NO 36
 点名 X Y
 1 23-39 - 146701.744 - 53067.313
 2 23-48 - 146700.750 - 53061.528
 COS=+ 0.169342 SIN=+ 0.985557
 AL= 80-15- 2 L = 5.870

NO 37
 点名 X Y
 1 23-70 - 146660.697 - 52961.802
 2 23-59 - 146670.870 - 52960.101
 COS=- 0.986307 SIN=+ 0.164918
 AL= 170-30-27 L = 10.314

* * * * * 各 筆 面 積 計 算 書 * * * * *

23 BLOCK

点 名	X	Y	(X-X0)*(YN-1-Y0)	(XN-1-X0)*(Y-Y0)
X0·Y0	- 146600.000	- 52900.000		
23-15	- 146681.307	- 53072.243		
23-24	- 146679.553	- 53071.018	+ 13702.447379	+ 13904.960526
23-16	- 146678.854	- 53070.472	+ 13485.453372	+ 13561.559016
23-2	- 146675.586	- 53050.975	+ 12885.296592	+ 11904.982650
23-17	- 146656.974	- 52939.506	+ 8601.649650	+ 2986.100516
23-18	- 146658.957	- 52937.242	+ 2329.155242	+ 2121.825708
23-19	- 146693.083	- 52938.280	+ 3466.597086	+ 2256.873960
23-20	- 146695.364	- 52940.264	+ 3650.533920	+ 3747.893912
23-5	- 146695.606	- 52941.778	+ 3849.479984	+ 3984.117192
23-6	- 146701.478	- 52977.005	+ 4239.547884	+ 7362.140030
23-7	- 146700.950	- 52977.091	+ 7773.654750	+ 7823.040498
23-8	- 146705.584	- 53004.928	+ 8139.576144	+ 10592.481600
23-9	- 146711.191	- 53038.463	+ 11667.049248	+ 14619.477392
23-10	- 146712.204	- 53044.319	+ 15536.102452	+ 16046.973929
23-11	- 146712.757	- 53044.220	+ 16272.977483	+ 16182.060880
23-12	- 146715.273	- 53059.101	+ 16624.672060	+ 17939.751457
23-13	- 146714.685	- 53059.198	+ 18246.498185	+ 18351.231054
23-21	- 146715.543	- 53064.361	+ 18394.214514	+ 18849.741285
23-23	- 146715.063	- 53065.089	+ 18911.869743	+ 19074.878327
23-22	- 146713.841	- 53066.800	+ 18793.896849	+ 19192.508400
23-15	- 146681.307	- 53072.243	+ 13562.007600	+ 19608.315363
			+230132.680137	+240110.913695
		倍面積	= 9978.233558	
		面積	= 4989.116779	

1 LOT

点 名	X	Y	(X-X0)*(YN-1-Y0)	(XN-1-X0)*(Y-Y0)
X0·Y0	- 146600.000	- 52900.000		
23-31	- 146658.716	- 52949.937		
23-17	- 146656.974	- 52939.506	+ 2845.110638	+ 2319.634296
23-18	- 146658.957	- 52937.242	+ 2329.155242	+ 2121.825708
23-32	- 146670.182	- 52937.583	+ 2613.718044	+ 2215.780931
23-64	- 146671.755	- 52947.062	+ 2696.768165	+ 3302.905284
23-63	- 146671.757	- 52947.761	+ 3377.027934	+ 3427.090555
23-31	- 146658.716	- 52949.937	+ 2804.334876	+ 3583.329309
			+ 16666.114899	+ 16970.566083
		倍面積	= 304.451184	
		面積	= 152.225592	

2 LOT

点 名	X	Y	(X-X0)*(YN-1-Y0)	(XN-1-X0)*(Y-Y0)
X0·Y0	- 146600.000	- 52900.000		
23-32	- 146670.182	- 52937.583		
23-34	- 146679.871	- 52937.878	+ 3001.791793	+ 2658.353796

* * * * * 各 筆 面 積 計 算 書 * * * * *

点 名	X	Y	(X-X0)*(YN-1-Y0)	(XN-1-X0)*(Y-Y0)
23-69	- 146680.896	- 52944.538	+ 3064.178688	+ 3557.294598
23-68	- 146678.575	- 52945.047	+ 3499.573350	+ 3644.122112
23-66	- 146678.653	- 52945.541	+ 3543.081691	+ 3578.384075
23-64	- 146671.755	- 52947.062	+ 3267.794455	+ 3701.567486
23-32	- 146670.182	- 52937.583	+ 3302.905284	+ 2696.768165
			+ 19679.325261	+ 19836.490232
		倍面積	= 157.164971	
		面積	= 78.582485	

3 LOT

点 名	X	Y	(X-X0)*(YN-1-Y0)	(XN-1-X0)*(Y-Y0)
X0·Y0	- 146600.000	- 52900.000		
23-34	- 146679.871	- 52937.878		
23-19	- 146693.083	- 52938.280	+ 3525.797874	+ 3057.461880
23-20	- 146695.364	- 52940.264	+ 3650.533920	+ 3747.893912
23-5	- 146695.606	- 52941.778	+ 3849.479984	+ 3984.117192
23-66	- 146678.653	- 52945.541	+ 3285.965034	+ 4353.992846
23-68	- 146678.575	- 52945.047	+ 3578.384075	+ 3543.081691
23-69	- 146680.896	- 52944.538	+ 3644.122112	+ 3499.573350
23-34	- 146679.871	- 52937.878	+ 3557.294598	+ 3064.178688
			+ 25091.577597	+ 25250.299559
		倍面積	= 158.721962	
		面積	= 79.360981	

4 LOT

点 名	X	Y	(X-X0)*(YN-1-Y0)	(XN-1-X0)*(Y-Y0)
X0·Y0	- 146600.000	- 52900.000		
23-5	- 146695.606	- 52941.778		
23-35	- 146697.854	- 52955.262	+ 4088.144412	+ 5283.378772
23-65	- 146680.808	- 52958.294	+ 4465.611696	+ 5704.301076
23-66	- 146678.653	- 52945.541	+ 4584.997982	+ 3680.077128
23-5	- 146695.606	- 52941.778	+ 4353.992846	+ 3285.965034
			+ 17492.746936	+ 17953.722010
		倍面積	= 460.975074	
		面積	= 230.487537	

5 LOT

点 名	X	Y	(X-X0)*(YN-1-Y0)	(XN-1-X0)*(Y-Y0)
X0·Y0	- 146600.000	- 52900.000		
23-35	- 146697.854	- 52955.262		
23-6	- 146701.478	- 52977.005	+ 5607.877236	+ 7535.247270
23-7	- 146700.950	- 52977.091	+ 7773.654750	+ 7823.040498

* * * * * 各 筆 面 積 計 算 書 * * * * *

点 名	X	Y	(X-X0)*(YN-1-Y0)	(XN-1-X0)*(Y-Y0)
23-36	- 146700.957	- 52977.134	+ 7782.876087	+ 7786.677300
23-55	- 146682.149	- 52980.939	+ 6336.480966	+ 8171.358623
23-54	- 146667.253	- 52983.954	+ 5443.390567	+ 6896.737146
23-58	- 146671.092	- 52960.131	+ 5968.457768	+ 4043.990143
23-59	- 146670.870	- 52960.101	+ 4261.483970	+ 4272.700292
23-60	- 146671.617	- 52953.566	+ 4304.253317	+ 3796.222420
23-61	- 146671.684	- 52952.369	+ 3839.825144	+ 3750.510673
23-62	- 146671.763	- 52949.967	+ 3758.156547	+ 3581.834428
23-64	- 146671.755	- 52947.062	+ 3585.382085	+ 3377.310306
23-66	- 146678.653	- 52945.541	+ 3701.567486	+ 3267.794455
23-65	- 146680.808	- 52958.294	+ 3680.077128	+ 4584.997982
23-35	- 146697.854	- 52955.262	+ 5704.301076	+ 4465.611696
			+ 71747.784127	+ 73354.033232
倍面積			= 1606.249105	
面積			= 803.124552	

6 LOT

点 名	X	Y	(X-X0)*(YN-1-Y0)	(XN-1-X0)*(Y-Y0)
X0-Y0	- 146600.000	- 52900.000		
23-36	- 146700.957	- 52977.134		
23-37	- 146706.895	- 53012.768	+ 8245.238930	+ 11384.718976
23-52	- 146688.975	- 53015.763	+ 10033.532800	+ 12374.485885
23-56	- 146683.125	- 52980.742	+ 9622.799375	+ 7184.019450
23-36	- 146700.957	- 52977.134	+ 8151.470094	+ 6411.763750
			+ 36053.041199	+ 37354.988061
倍面積			= 1301.946862	
面積			= 650.973431	

7 LOT

点 名	X	Y	(X-X0)*(YN-1-Y0)	(XN-1-X0)*(Y-Y0)
X0-Y0	- 146600.000	- 53000.000		
23-37	- 146706.895	- 53012.768		
23-9	- 146711.191	- 53038.463	+ 1419.686688	+ 4111.502385
23-10	- 146712.204	- 53044.319	+ 4315.702452	+ 4927.873929
23-47	- 146698.955	- 53046.794	+ 4385.586645	+ 5250.473976
23-46	- 146694.307	- 53047.683	+ 4413.001758	+ 4718.471265
23-52	- 146688.975	- 53015.763	+ 4242.594925	+ 1486.561241
23-37	- 146706.895	- 53012.768	+ 1684.985885	+ 1136.032800
			+ 20461.558353	+ 21630.915596
倍面積			= 1169.357243	
面積			= 584.678621	

* * * * * 各 筆 面 積 計 算 書 * * * * *

8 LOT

点 名	X	Y	(X-X0)*(YN-1-Y0)	(XN-1-X0)*(Y-Y0)
X0·Y0	- 146600.000	- 5 3000.000		
23-10	- 146712.204	- 5 3044.319		
23-11	- 146712.757	- 5 3044.220	+ 4997.277483	+ 4961.660880
23-38	- 146715.100	- 5 3058.078	+ 5089.722000	+ 6548.701046
23-50	- 146701.262	- 5 3060.410	+ 5881.094436	+ 6953.191000
23-47	- 146698.955	- 5 3046.794	+ 5977.871550	+ 4738.454028
23-10	- 146712.204	- 5 3044.319	+ 5250.473976	+ 4385.586645
			+ 27196.439445	+ 27587.593599
		倍面積	= 391.154154	
		面積	= 195.577077	

9 LOT

点 名	X	Y	(X-X0)*(YN-1-Y0)	(XN-1-X0)*(Y-Y0)
X0·Y0	- 146700.000	- 5 3000.000		
23-38	- 146715.100	- 5 3058.078		
23-12	- 146715.273	- 5 3059.101	+ 887.025294	+ 892.425100
23-13	- 146714.685	- 5 3059.198	+ 867.898185	+ 904.131054
23-49	- 146701.432	- 5 3061.414	+ 84.771536	+ 901.864590
23-50	- 146701.262	- 5 3060.410	+ 77.504468	+ 86.507120
23-38	- 146715.100	- 5 3058.078	+ 912.191000	+ 73.294436
			+ 2829.390483	+ 2858.222300
		倍面積	= 28.831817	
		面積	= 14.415908	

10 LOT

点 名	X	Y	(X-X0)*(YN-1-Y0)	(XN-1-X0)*(Y-Y0)
X0·Y0	- 146700.000	- 5 3000.000		
23-13	- 146714.685	- 5 3059.198		
23-21	- 146715.543	- 5 3064.361	+ 920.114514	+ 945.141285
23-23	- 146715.063	- 5 3065.089	+ 969.469743	+ 1011.678327
23-39	- 146701.744	- 5 3067.313	+ 113.515216	+ 1013.935719
23-48	- 146700.750	- 5 3061.528	+ 50.484750	+ 107.304832
23-13	- 146714.685	- 5 3059.198	+ 903.538680	+ 44.398500
			+ 2957.122903	+ 3122.458663
		倍面積	= 165.335760	
		面積	= 82.667880	

11 LOT

点 名	X	Y	(X-X0)*(YN-1-Y0)	(XN-1-X0)*(Y-Y0)
X0·Y0	- 146600.000	- 5 3000.000		
23-24	- 146679.553	- 5 3071.018		
23-16	- 146678.854	- 5 3070.472	+ 5600.053372	+ 5606.259016

* * * * * 各 筆 面 積 計 算 書 * * * * *

点 名	X	Y	(X-X0)*(YN-1-Y0)	(XN-1-X0)*(Y-Y0)
23-25	- 146678.044	- 53065.639	+ 5499.916768	+ 5175.897706
23-40	- 146679.002	- 53065.274	+ 5185.612278	+ 5094.244056
23-41	- 146681.163	- 53063.064	+ 5297.833662	+ 4982.182128
23-42	- 146683.408	- 53056.092	+ 5260.042112	+ 4552.594996
23-43	- 146685.561	- 53051.123	+ 4799.287612	+ 4264.067184
23-44	- 146686.582	- 53049.585	+ 4426.331586	+ 4242.542185
23-45	- 146687.491	- 53048.986	+ 4338.241235	+ 4241.305852
23-47	- 146698.955	- 53046.794	+ 4847.409630	+ 4094.053854
23-49	- 146701.432	- 53061.414	+ 4746.409008	+ 6077.222370
23-48	- 146700.750	- 53061.528	+ 6187.460500	+ 6240.908096
23-39	- 146701.744	- 53067.313	+ 6260.104832	+ 6781.784750
23-24	- 146679.553	- 53071.018	+ 5354.951089	+ 7225.655392
			+ 67803.653684	+ 68578.717585
		倍面積	= 775.063901	
		面積	= 387.531950	

12 LOT

点 名	X	Y	(X-X0)*(YN-1-Y0)	(XN-1-X0)*(Y-Y0)
X0-Y0	- 146600.000	- 53000.000		
23-25	- 146678.044	- 53065.639		
23-2	- 146675.586	- 53050.975	+ 4961.389454	+ 3978.292900
23-45	- 146687.491	- 53048.986	+ 4459.853725	+ 3702.655796
23-44	- 146686.582	- 53049.585	+ 4241.305852	+ 4338.241235
23-43	- 146685.561	- 53051.123	+ 4242.542185	+ 4426.331586
23-42	- 146683.408	- 53056.092	+ 4264.067184	+ 4799.287612
23-41	- 146681.163	- 53063.064	+ 4552.594996	+ 5260.042112
23-40	- 146679.002	- 53065.274	+ 4982.182128	+ 5297.833662
23-25	- 146678.044	- 53065.639	+ 5094.244056	+ 5185.612278
			+ 36798.179580	+ 36988.297181
		倍面積	= 190.117601	
		面積	= 95.058800	

13 LOT

点 名	X	Y	(X-X0)*(YN-1-Y0)	(XN-1-X0)*(Y-Y0)
X0-Y0	- 146600.000	- 53000.000		
23-2	- 146675.586	- 53050.975		
23-26	- 146671.830	- 53028.477	+ 3661.534250	+ 2152.462522
23-51	- 146690.576	- 53025.346	+ 2579.332752	+ 1820.603180
23-46	- 146694.307	- 53047.683	+ 2390.305222	+ 4318.935408
23-45	- 146687.491	- 53048.986	+ 4171.833353	+ 4619.722702
23-2	- 146675.586	- 53050.975	+ 3702.655796	+ 4459.853725
			+ 16505.661373	+ 17371.577537
		倍面積	= 865.916164	
		面積	= 432.958082	

* * * * * 各 筆 面 積 計 算 書 * * * * *

14 LOT

点 名	X	Y	(X-X0)*(YN-1-Y0)	(XN-1-X0)*(Y-Y0)
X0·Y0	- 146600.000	- 53000.000		
23-26	- 146671.830	- 53028.477		
23-27	- 146670.230	- 53018.897	+ 1999.939710	+ 1357.371510
23-52	- 146688.975	- 53015.763	+ 1681.360575	+ 1107.035490
23-51	- 146690.576	- 53025.346	+ 1427.749488	+ 2255.160350
23-26	- 146671.830	- 53028.477	+ 1820.603180	+ 2579.332752
			+ 6929.652953	+ 7298.900102
		倍面積	= 369.247149	
		面積	= 184.623574	

15 LOT

点 名	X	Y	(X-X0)*(YN-1-Y0)	(XN-1-X0)*(Y-Y0)
X0·Y0	- 146600.000	- 52900.000		
23-27	- 146670.230	- 53018.897		
23-28	- 146666.237	- 52994.984	+ 7875.380589	+ 6670.726320
23-53	- 146684.982	- 52991.856	+ 8071.930288	+ 6084.265872
23-52	- 146688.975	- 53015.763	+ 8172.887600	+ 9837.771266
23-27	- 146670.230	- 53018.897	+ 8130.035490	+ 10578.860575
			+ 32250.233967	+ 33171.624033
		倍面積	= 921.390066	
		面積	= 460.695033	

16 LOT

点 名	X	Y	(X-X0)*(YN-1-Y0)	(XN-1-X0)*(Y-Y0)
X0·Y0	- 146600.000	- 52900.000		
23-28	- 146666.237	- 52994.984		
23-29	- 146664.489	- 52984.513	+ 6125.423176	+ 5597.887581
23-55	- 146682.149	- 52980.939	+ 6942.658437	+ 5219.675171
23-56	- 146683.125	- 52980.742	+ 6728.054375	+ 6632.874558
23-53	- 146684.982	- 52991.856	+ 6861.616644	+ 7635.530000
23-28	- 146666.237	- 52994.984	+ 6084.265872	+ 8071.930288
			+ 32742.018504	+ 33157.897598
		倍面積	= 415.879094	
		面積	= 207.939547	

17-1 LOT

点 名	X	Y	(X-X0)*(YN-1-Y0)	(XN-1-X0)*(Y-Y0)
X0·Y0	- 146600.000	- 52900.000		
23-29	- 146664.489	- 52984.513		
23-30	- 146664.405	- 52984.012	+ 5443.059765	+ 5417.849868

* * * * * 各 筆 面 積 計 算 書 * * * * *

点 名	X	Y	(X-X0)*(YN-1-Y0)	(XN-1-X0)*(Y-Y0)
23-57	- 146667.341	- 52983.410	+ 5657.452092	+ 5372.021050
23-54	- 146667.253	- 52983.954	+ 5609.572730	+ 5653.546314
23-29	- 146664.489	- 52984.513	+ 5414.109506	+ 5683.752789
			+ 22124.194093	+ 22127.170021
		倍面積	= 2.975928	
		面積	= 1.487964	

17-2 LOT

点 名	X	Y	(X-X0)*(YN-1-Y0)	(XN-1-X0)*(Y-Y0)
X0-Y0	- 146600.000	- 52900.000		
23-30	- 146664.405	- 52984.012	+ 5099.276364	+ 3980.357810
23-70	- 146660.697	- 52961.802	+ 4379.907740	+ 3647.950397
23-59	- 146670.870	- 52960.101	+ 4272.700292	+ 4261.483970
23-58	- 146671.092	- 52960.131	+ 4049.281671	+ 5929.783720
23-57	- 146667.341	- 52983.410	+ 5372.021050	+ 5657.452092
23-30	- 146664.405	- 52984.012	+ 23173.187117	+ 23477.027989
		倍面積	= 303.840872	
		面積	= 151.920436	

17-3 LOT

点 名	X	Y	(X-X0)*(YN-1-Y0)	(XN-1-X0)*(Y-Y0)
X0-Y0	- 146600.000	- 52900.000		
23-19	- 146693.083	- 52938.280	+ 3568.802220	+ 3638.713680
23-19	- 146693.083	- 52938.280	+ 3827.334784	+ 3656.253780
23-70	- 146660.697	- 52961.802	+ 3628.766232	+ 3031.026089
23-31	- 146658.716	- 52949.937	+ 3583.329309	+ 2804.334876
23-63	- 146671.757	- 52947.761	+ 3427.472643	+ 3585.482019
23-62	- 146671.763	- 52949.967	+ 3581.834428	+ 3758.156547
23-61	- 146671.684	- 52952.369	+ 3750.510673	+ 3839.825144
23-60	- 146671.617	- 52953.566	+ 3796.222420	+ 4304.253317
23-59	- 146670.870	- 52960.101	+ 3647.950397	+ 4379.907740
23-70	- 146660.697	- 52961.802	+ 25416.086102	+ 25702.985732
		倍面積	= 286.899630	
		面積	= 143.449815	

24口

点 名	X	Y	(X-X0)*(YN-1-Y0)	(XN-1-X0)*(Y-Y0)
X0-Y0	- 146600.000	- 53000.000		
23-23	- 146715.063	- 53065.089	+ 7409.796849	+ 7686.208400
23-22	- 146713.841	- 53066.800	+ 5431.307600	+ 8224.215363
23-15	- 146681.307	- 53072.243	+ 5747.147379	+ 5774.260526
23-24	- 146679.553	- 53071.018		

* * * * * 各 筆 面 積 計 算 書 * * * * *

点 名	X	Y	(X-X0)*(YN-1-Y0)	(XN-1-X0)*(Y-Y0)
23-23	- 146715.063	- 53065.089	+ 8171.544134	+ 5178.025217
			+ 26759.795962	+ 26862.709506
		倍面積	= 102.913544	
		面積	= 51.456772	

3 スミリ

点 名	X	Y	(X-X0)*(YN-1-Y0)	(XN-1-X0)*(Y-Y0)
X0-Y0	- 146600.000	- 52900.000		
23-3	- 146656.584	- 52937.169		
23-17	- 146656.974	- 52939.506	+ 2117.666606	+ 2235.407504
23-18	- 146658.957	- 52937.242	+ 2329.155242	+ 2121.825708
23-3	- 146656.584	- 52937.169	+ 2107.301328	+ 2191.372733
			+ 6554.123176	+ 6548.605945
		倍面積	= 5.517231	
		面積	= 2.758615	

4 スミリ

点 名	X	Y	(X-X0)*(YN-1-Y0)	(XN-1-X0)*(Y-Y0)
X0-Y0	- 146600.000	- 52900.000		
23-4	- 146695.056	- 52938.340		
23-19	- 146693.083	- 52938.280	+ 3568.802220	+ 3638.743680
23-20	- 146695.364	- 52940.264	+ 3650.533920	+ 3747.893912
23-4	- 146695.056	- 52938.340	+ 3827.334784	+ 3656.255760
			+ 11046.670924	+ 11042.893352
		倍面積	= 3.777572	
		面積	= 1.888786	

* * * 各筆面積 集計表 * * *

街区名・筆名	各筆面積	隅切面積
23 BLOCK	4989.11	
1 LOT	152.22	
2 LOT	78.58	
3 LOT	79.36	
4 LOT	230.48	
5 LOT	803.12	
6 LOT	650.97	
7 LOT	584.67	
8 LOT	195.57	
9 LOT	14.41	
10 LOT	82.66	
11 LOT	387.53	
12 LOT	95.05	
13 LOT	432.95	
14 LOT	184.62	
15 LOT	460.69	
16 LOT	207.93	
17-1 LOT	1.48	
17-2 LOT	151.92	
17-3 LOT	143.44	
スロ	51.45	
3 スミキリ		2.75
4 スミキリ		1.88
合計 =	4989.10	4.63